

CTA Workforce Outreach Event



September 12th, 2024
Columbus Park Refectory
10am-12pm





Welcoming Remarks by: Charles Townsend

Workforce Initiatives Manager, Diversity Programs



CTA Infrastructure: [Bill Polacek](#)

Red Line Extension Project: [Charles Freeman](#)

Workforce Goals: [Reggie Bates](#)

CTA Workforce Partners : [Reggie Bates](#)

CTA Outreach Process Flow: [Reggie Bates](#)

[*Networking and Feedback Forms*](#)





Chicago Transit Authority Infrastructure

**Bill Polacek
General Manager
Capital Construction**





Infrastructure Projects

Ongoing

- Barry Damen Canal Substations
- Morgan Substation Construction
- Harlem Bus Bridge Replacement

Upcoming

- Des Plaines Yard Track Improvements
- eBus – Bus Garages
- Cicero Grade Crossing
- Substation Equipment Replacement
- Lake Street Bridge & Track



Station & Facilities

Ongoing

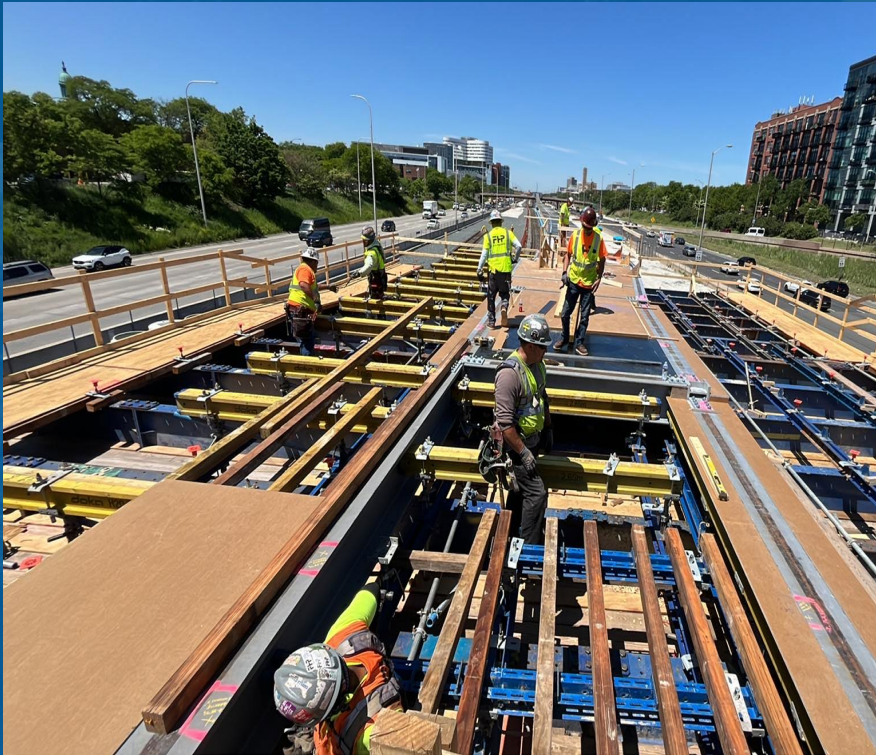
- Skokie Shops Build Out
- Kedzie Bus Garage - Masonry
- All Stations Accessibility Program
 - Austin/Lake
 - Damen/Lake (CDOT)
 - Racine/Congress

Upcoming

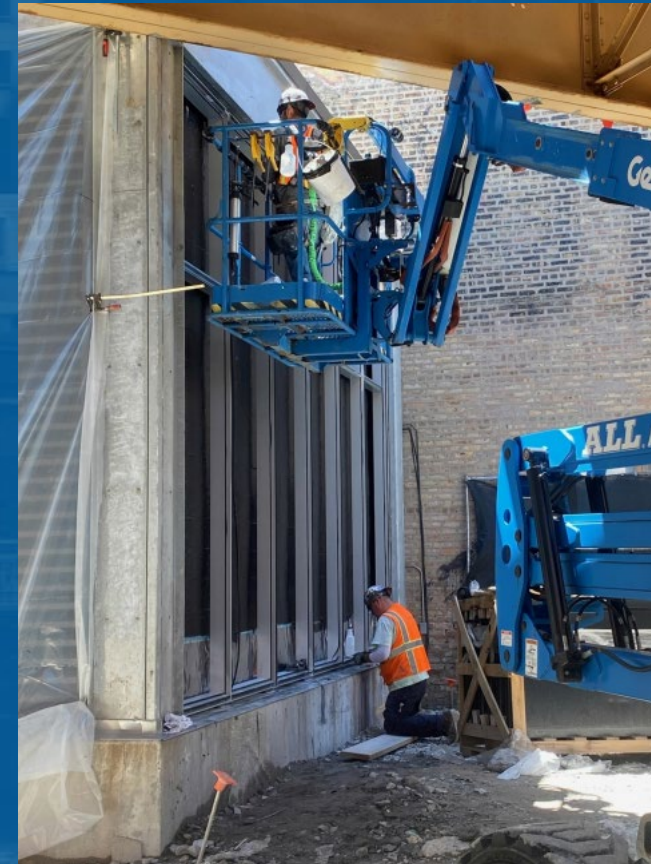
- Station improvements
 - Western Brown Line
 - 43rd Green Line Station Improvements
- All Stations Accessibility Program
 - Montrose
 - California/Milwaukee



Racine Station Carpentry & Ironwork



Substation Masonry & Glazing





Austin/Lake Excavation – Equipment Operator



Harlem Bus Bridge Directional Boring & Hydro Vac Operators





Opportunities Include

Trade work

- Electricians
- Line workers
- Laborers
- Masons
- Ironworkers
- Carpenters
- Operators
- Pipefitters
- Roofers



Professional Services

- Project Management
- Field Engineers
- Engineers
- Architects
- Estimators
- Surveyors
- Admin Support



Upcoming Professional Services

- Diesel Locomotive Storage Sheds
- Roof Replacement
- Station Renovations
- Traction Power Upgrades
- Track Replacement
- ASAP
 - Belmont Blue Line
 - Irving Park Blue Line
 - Pulaski/Congress (Blue Line)
 - Oak Park/Ridgeland (Green Line)



Charles Freeman

Chicago Transit Authority

General Manager, Red Line Extension (RLE)



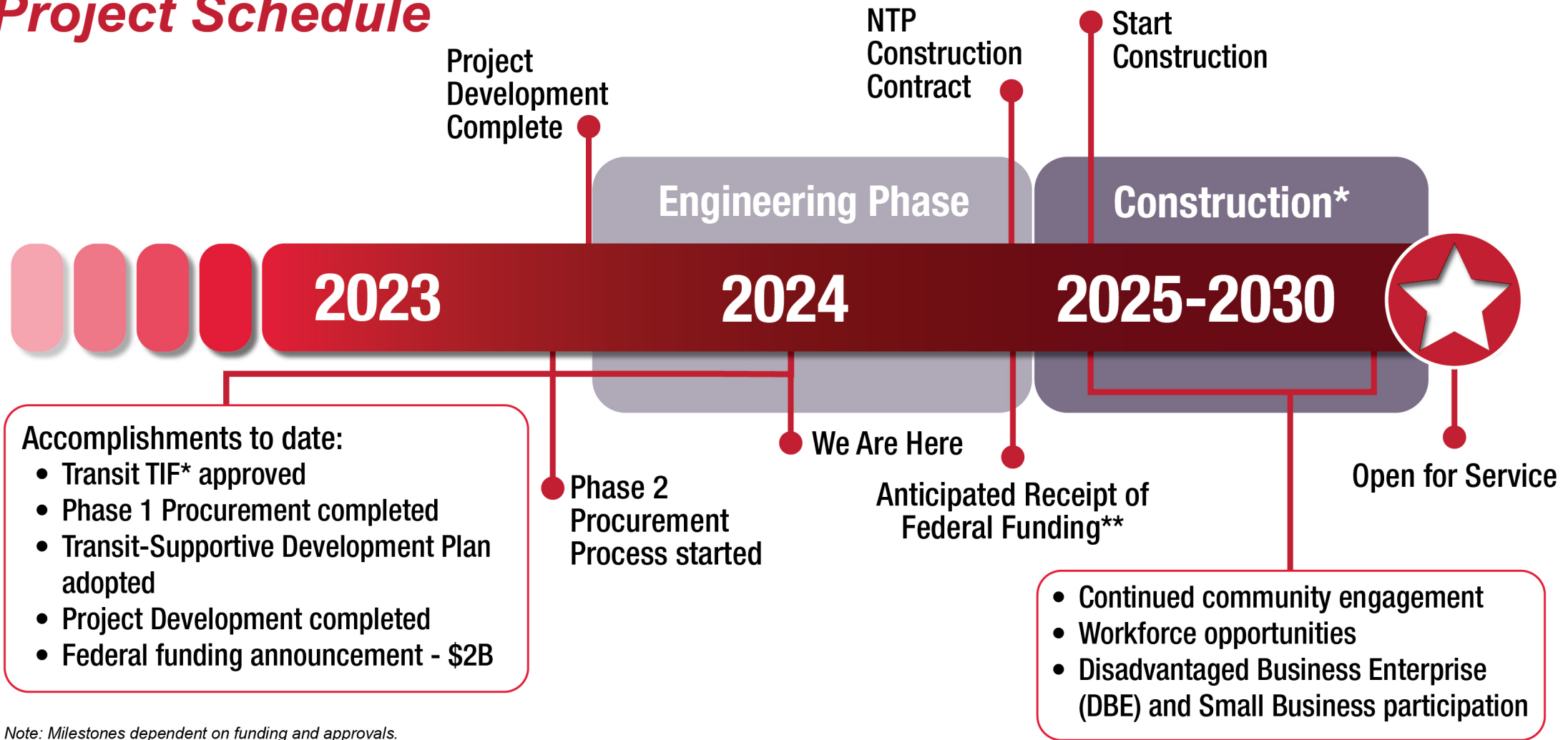
\$5.3 billion Red Line Extension Project Overview



- 5.6-mile rail extension from 95th/Dan Ryan Terminal to 130th
- Four new fully accessible stations:
 - 103rd Street (near Eggleston)
 - 111th Street (near Eggleston)
 - Michigan Avenue (near 116th St)
 - 130th Street (near Altgeld Gardens)
- Multimodal connections at each station will include bus, bike, pedestrian, and park & ride facilities
- Train storage yard & shop facility at 120th Street



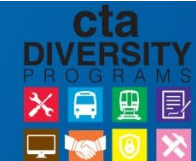
Project Schedule



Note: Milestones dependent on funding and approvals.

Transit Tax Increment Financing (TIF)

*Exact dates subject to further refinement as project advances.



Advance demolition designers and contractors



CTA has selected designers and contractors to perform demolition of buildings acquired for the Red Line Extension Project



Ordinary Demolition designer

- **Altus Works**

Complex Demolition designer

- **Epstein & Sons**

Jobs include: Engineers, architects, office support

Ordinary Demolition contractors

- **Foundation Mechanics (SBE)**
- **Taza Construction dba Tiles in Style, LLC (SBE)**

Complex Demolition contractors

- **John Burns Construction Co.**
- **Kiewit Infrastructure Co.**

Work Orders to be issued in 2024

Jobs include: Civil / Structural, demolition, utility disconnect work, environmental abatement and remediation, site restoration & fencing





CTA has selected firms to manage pre-construction and design-build construction activities.

1. Advanced CM Task Order for Demolition/Advance Work Oversight: SQN Associates LLC

Oversee the demolition work orders and advance work, such as third-party utilities, community office renovation and Cottage Grove 42" water main.

2. CM LIQ for Design-Build (Mainline) and Design-Bid-Build (Yard & Shop) Contracts: REDefine Southside Partners (RSPJV)

Advise CTA and act on their behalf, ensuring successful completion of the project and the Owner's interests are represented in every decision in each phase including: bidding, design, construction, commissioning and start-up, and close out.



Career opportunities include: Field Inspectors, Quality Manager,
Safety Manager, Office Support, Engineers

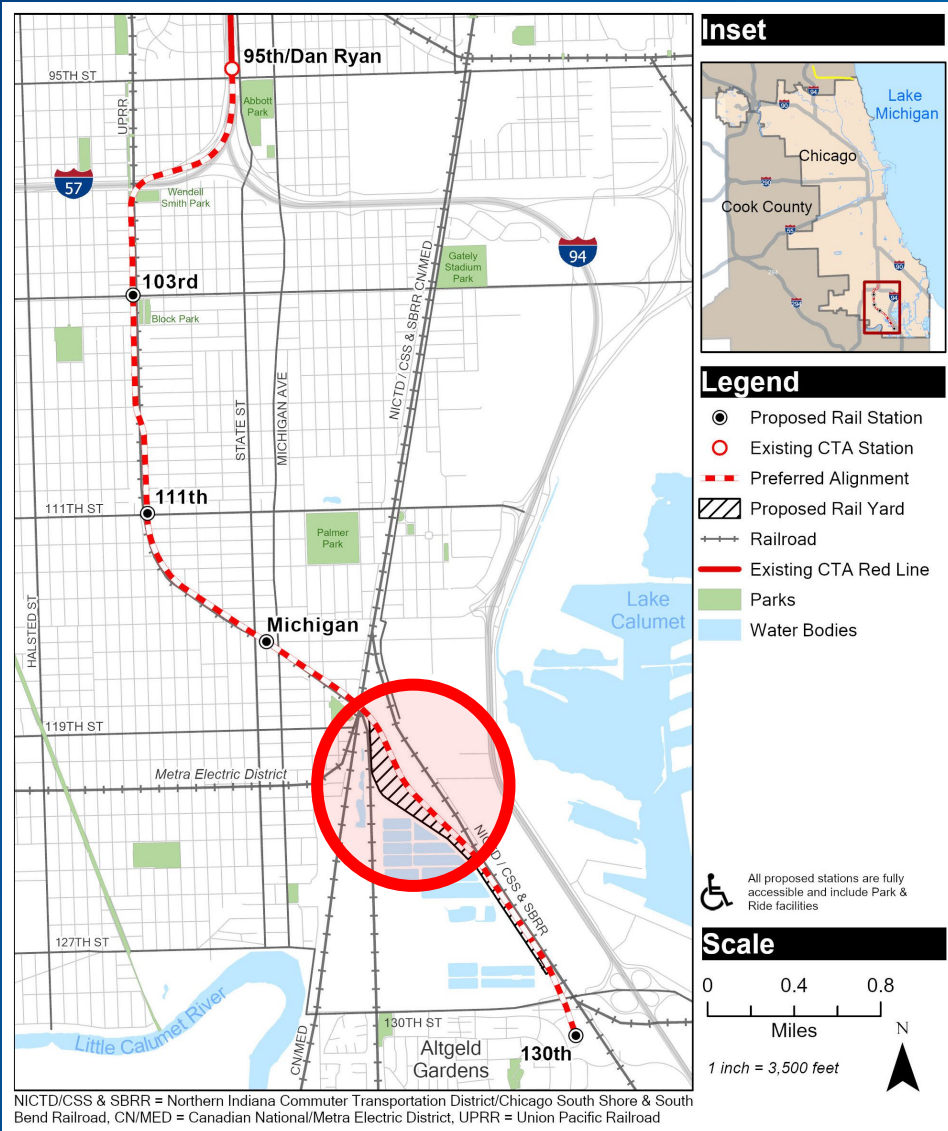
RLE: Design-build contract awarded August 2024



- \$2.9 billion design-build contract awarded to **Walsh-VINCI Transit Community Partners**
 - Walsh Construction, VINCI, Systra, EXP
- RLE workforce goals as a percentage of total labor hours:
 - Design
 - Service Area Economically Disadvantaged Area: 10%
 - Construction
 - Careers Opportunity Goal: 10%
 - Service Area Economically Disadvantaged Area: 35%
 - Union Apprentice: 15% Develop pipeline for training, apprenticeship and jobs
- Will work with trades, assist agencies, transit peers to establish partnerships and pipelines
- WVTCP to hold multiple Meet the Contractor workforce events, including in project footprint
- Opportunities will include trade work and professional services



RLE 120th yard and shop designer and contractor



CTA has hired a designer for the new rail yard and maintenance shop near 120th Street and will hire a contractor to design-bid-build (DBB) it as part of the RLE project.

Designer: **TY Lin**

Design-bid-build (DBB) contractor:

- RFP expected to be issued Q2 2025
- Contract award and notice to proceed anticipated to be issued early 2026

Career opportunities include: Architects, CAD, field inspectors, quality manager, safety manager, office support, engineers



Career opportunities



View positions at transitchicago.com/careers

CTA is building the team that will deliver the Red Line Extension:

- Engineering positions:
 - Communications-systems integration
- Construction positions:
 - Project managers
- Safety
 - SSC project manager
 - Construction safety inspectors
- Public outreach
 - 2 community liaison positions
 - 2 public affairs specialists





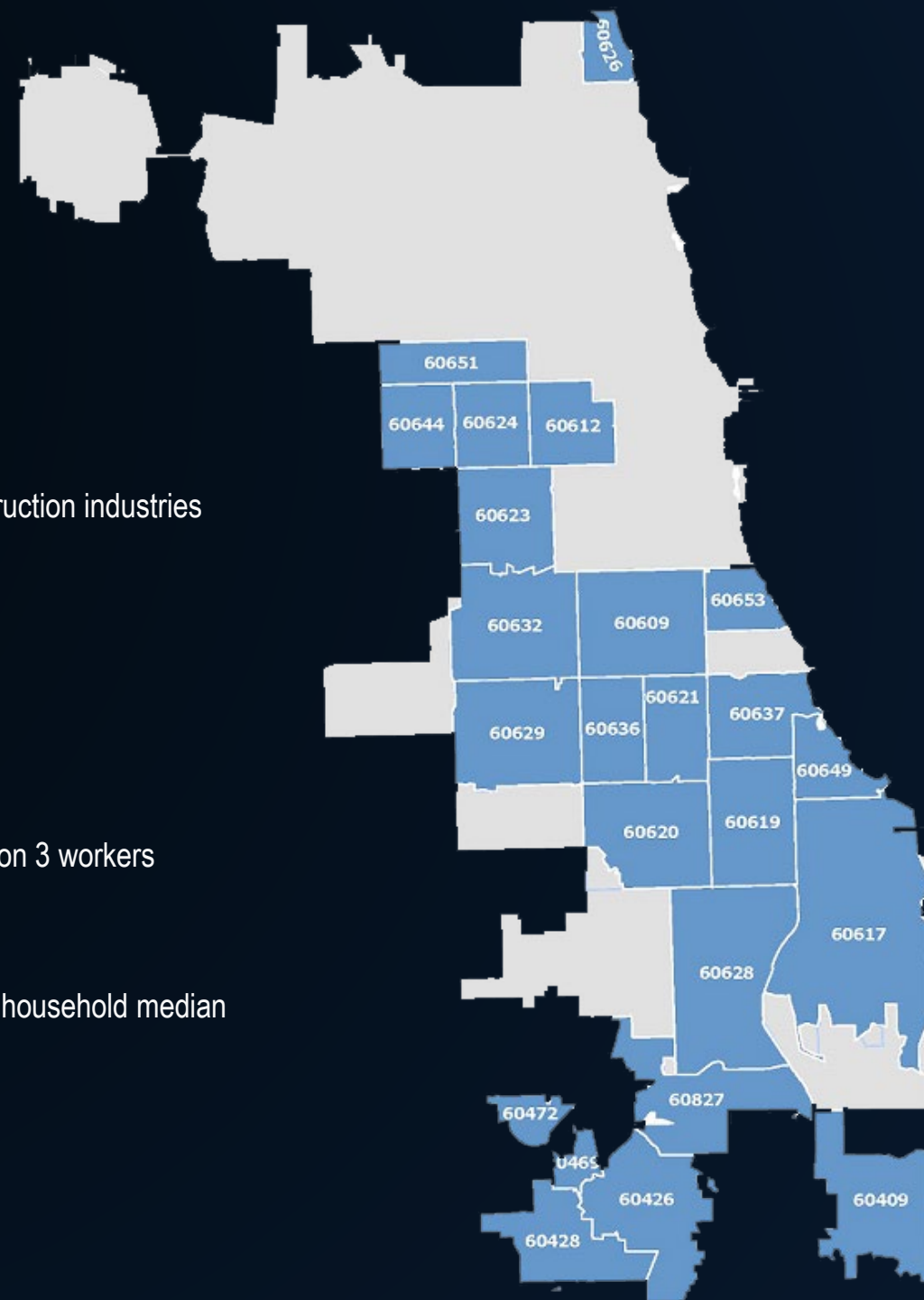
Reggie Bates

Chicago Transit Authority

Senior Coordinator, Workforce Initiatives



What We Do (Overview)



Connect Communities to Opportunities

- Building on CTA's past practices, with lessons learned
- Establishing a pipeline of career seekers to connect them with opportunities in the construction industries with family-sustaining wages
- Supporting training and preparation
- Engaging with Labor Unions to support strong coordination

Contract Goals for Workforce Participation

- Careers Opportunity Goal: Workforce Innovation and Opportunity Act (WIOA) and Section 3 workers
- Union Apprentices: new entries into the trade labor unions
- Economically Disadvantaged Area (EDA): zip codes within the CTA Service Area with a household median income of \$45k/year or less

Placement Partners

Workforce
Partners
2024



<https://cwit.org/>



www.hire360chicago.com

Pre-Apprentice Partners



<https://cwit.org/>



<https://www.metrofamily.org/>



<https://www.revolutionworkshop.org>

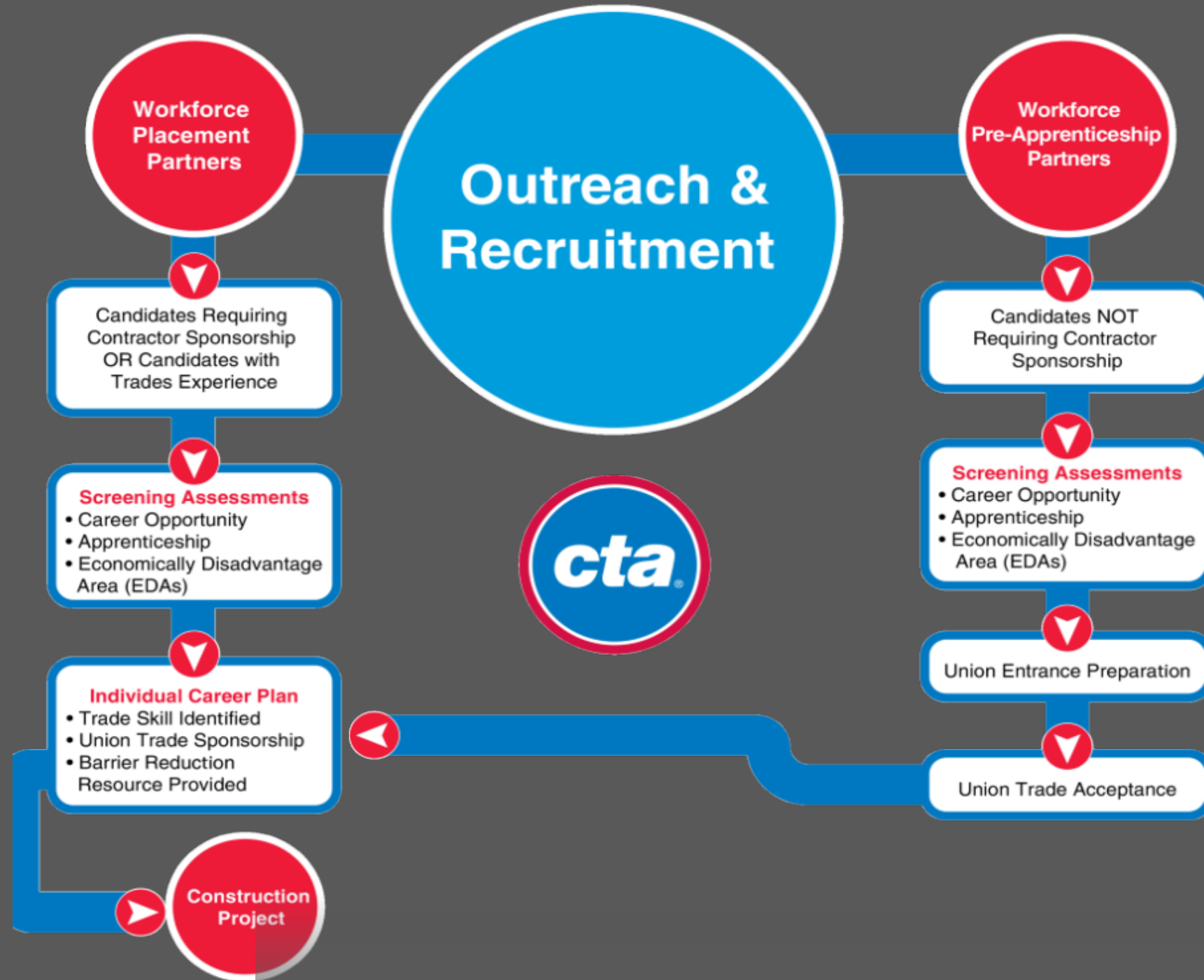
Why do we have Workforce Partners?

We work with our Workforce Partners to:

- Inform the public of job opportunities on CTA projects at quarterly workforce outreach events
- Provide access to training for skill improvement
- Provide access to personalized career coaching.



CTA Workforce Outreach Process Flow



Workforce Team Contact Information

- Misty Brown, Senior Manager
 - Extension 12606
 - Cell: 312.722.0812
 - Email: Mbrown1@transitchicago.com
- Charles Townsend, Manager
 - Extension 12430
 - Cell: 773.620.8109
 - Email: Ctownsend3@transitchicago.com
- Reggie Bates, Senior Coordinator
 - Extension 12668
 - Cell: 773.569.9238
 - Email: Rbates2@transitchicago.com
- Gernell Turner, Coordinator
 - Extension 12664
 - Cell: 312.622.0485
 - Email: Gturner@transitchicago.com



Workforce Inbox
Workforceinitiatives@transitchicago.com



Time to Network!
(Please complete the feedback form before you leave)

