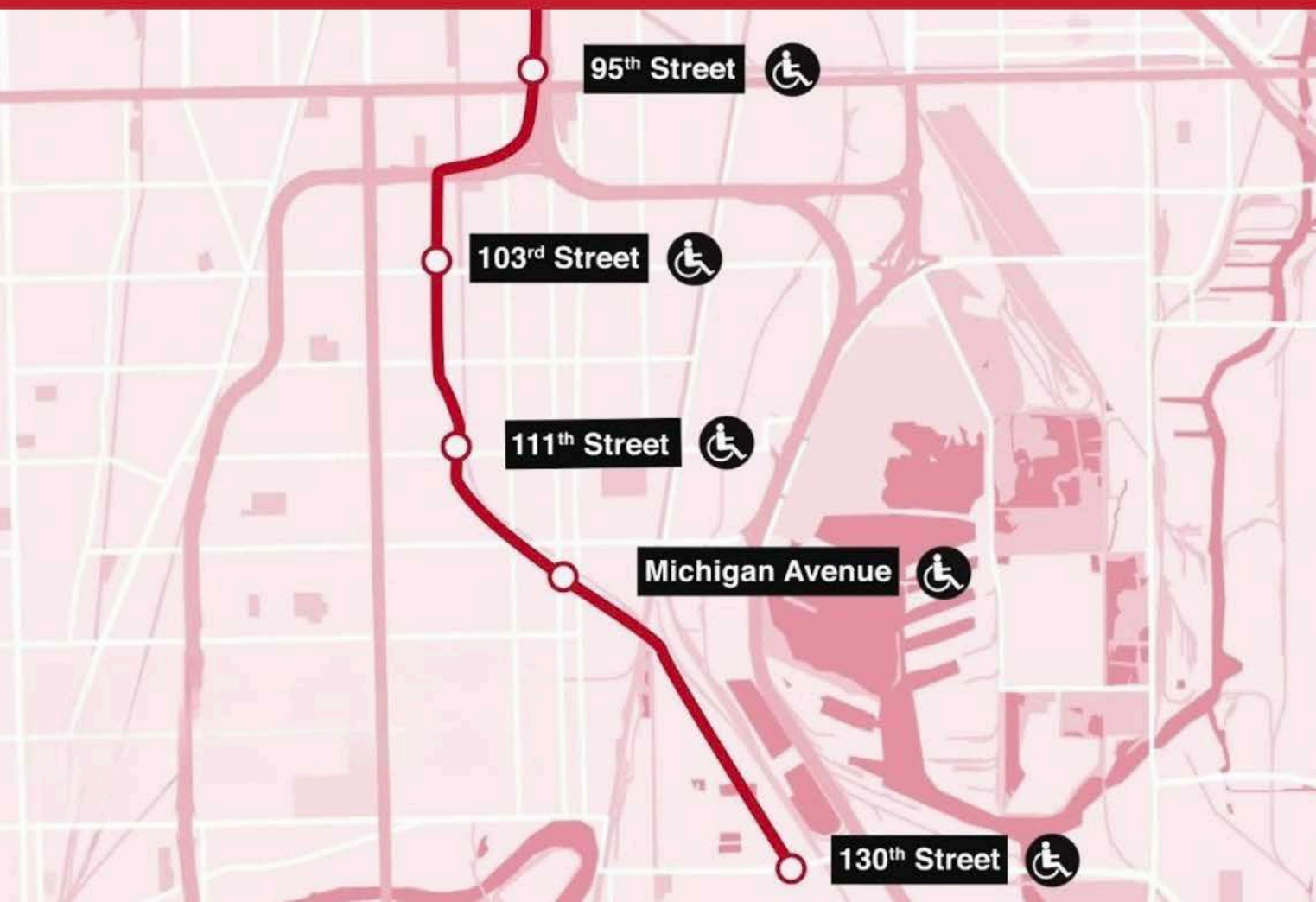




# READY. SET. BUILD!





# Project Overview

The Red Line Extension Project will extend the CTA Red Line from the 95th Street Terminal to 130th Street, expanding rapid transit access on Chicago's Far South Side.

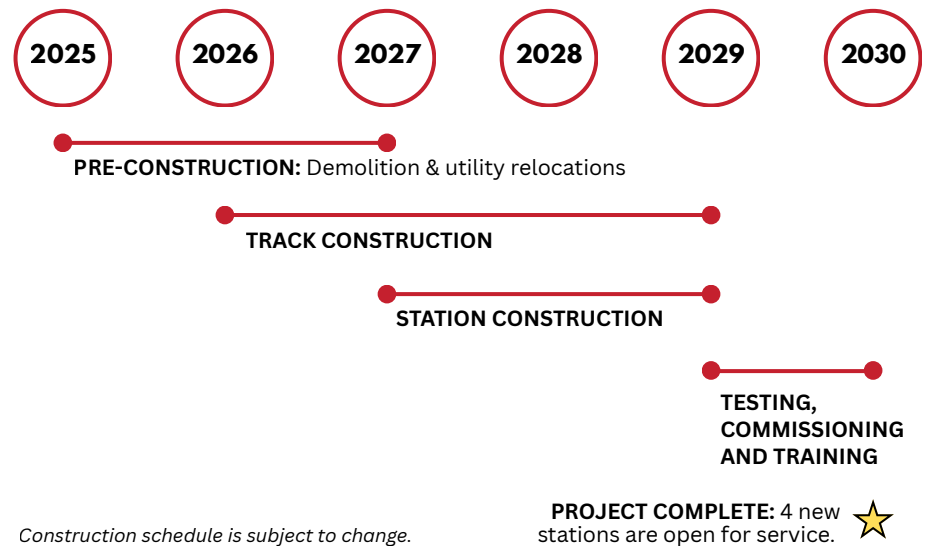
The project includes four new stations at 103rd Street, 111th Street, Michigan Avenue, and 130th Street, each designed with parking and bus connections to improve accessibility and multimodal connectivity.

In addition, a new train storage yard and maintenance facility will be constructed at 120th Street to support expanded service. Groundbreaking is expected in Spring 2026, with project completion in 2030.



# Project Schedule

Construction is expected to begin in Spring 2026, with the Red Line Extension anticipated to be completed in 2030.



Construction schedule is subject to change.



### 103rd Station



### Michigan Station



### 111th Station



### 130th Station

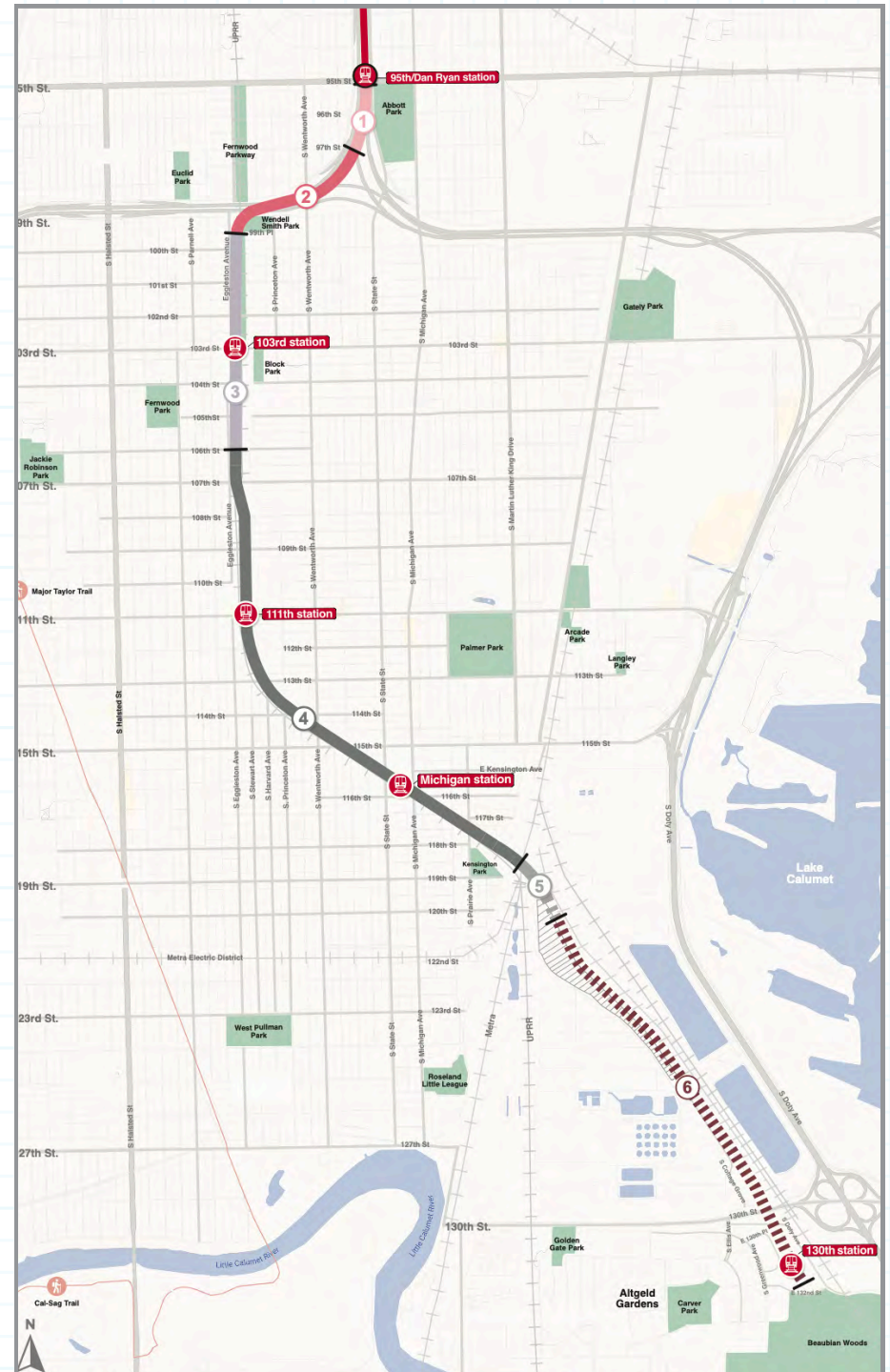


# Construction Overview

The construction of the Red Line Extension will occur in six zones. Work is expected to begin in Zone 4 near S. Calumet Avenue and E. 117th Street. The work will then proceed from south to north to 106th Place.

Work will occur across the multiple zones throughout construction and residents will receive advance notice of upcoming work.

- 1 95th Street/Dan Ryan to I-57 near 97th Street
- 2 I-57 near 97th Street to 99th Place
- 3 99th Place to 106th Place
- 4 106th Place to 118th Street
- 5 118th Street to 120th Place
- 6 120th Place to 132nd Street



# Impacts to Your Community

As construction moves forward on the Red Line Extension from the 95th Street Terminal to 130th Street, neighbors may notice construction activities in the area. These short-term impacts are necessary to safely build the new rail line and stations, and updates will be shared in advance to help residents and businesses plan ahead.

## Expected Impacts:

- Noise and vibration
- Street closures
- Alley closures
- Dust and truck traffic
- Traffic lane and sidewalk closures
- Nighttime lighting

## Mitigations to reduce impacts to the community:

- Noisiest activities will be performed during daytime hours whenever possible
- Noise mitigation with sound blankets, where feasible
- Dust mitigation including the use of water hoses
- Street sweeping
- Pest abatement
- Haul roads
- Use of glare-diffusing light fixtures or shields



## Sign Up

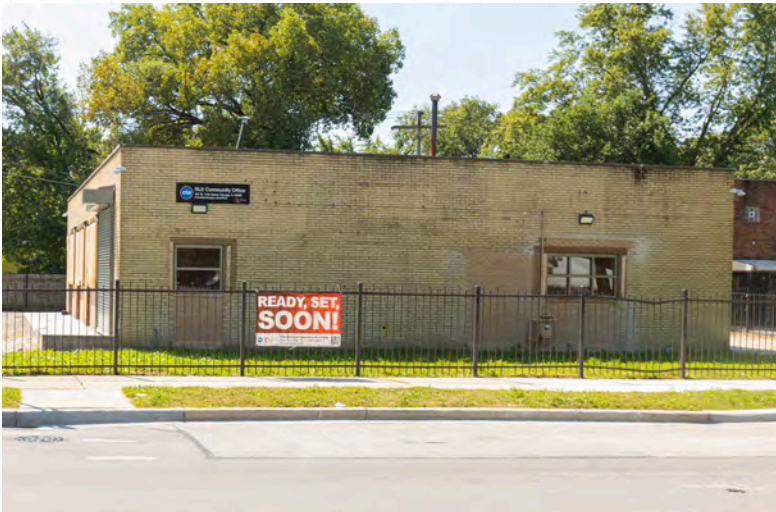
We will notify the community of upcoming construction activities via Construction Activity Notices (CANs) in print and online. Sign up for email alerts by scanning the QR code.





# CTA's Commitment and Community Outreach

## RLE Community Office



The RLE Community Office is located at **401 W. 111th St.** in the Roseland community of Chicago.

The RLE Community Office will open in 2026 and serve as a one-stop resource where residents, businesses, stakeholders, and the general public can learn about the Red Line Extension project, speak with knowledgeable CTA staff, and share questions or concerns.

CTA is committed to providing you with information throughout the work period, including what to expect, when to expect it and what we will do to minimize impacts.

- 1** Use construction methods and equipment that limit impacts
- 2** Provide advance notice of construction activities
- 3** Respond to questions and concerns in a timely manner
- 4** Provide alternative parking to affected residents
- 5** Open an RLE Community Office to connect with residents and business owners.



# Stay Connected!

Sign up for project alerts  
at [transitchicago.com/rle](https://transitchicago.com/rle).



## Contact us at

[RedExtension@transitchicago.com](mailto:RedExtension@transitchicago.com)

or leave a message for callback  
at (312) 772-2272.

-  [Facebook.com/CTARedExt](https://www.facebook.com/CTARedExt)
-  [@CTARedExt](https://www.instagram.com/CTARedExt)
-  [RedExtension@transitchicago.com](mailto:RedExtension@transitchicago.com)
-  [transitchicago.com/rle/](https://transitchicago.com/rle/)
-  [@CTARedLineExtension](https://www.youtube.com/@CTARedLineExtension)



**Sign up  
for alerts**



**Workforce  
opportunities**