

# Red Line Extension

## Project Overview

- 5.5-mile extension of the CTA Red Line, from the 95th Street Terminal to 130th Street
- Four new stations at 103rd Street, 111th Street, Michigan Avenue, and 130th Street
- Parking and bus connections at each station
- New train storage yard and maintenance facility at 120th Street
- **Groundbreaking: Spring 2026**
- **Project completion: 2030**



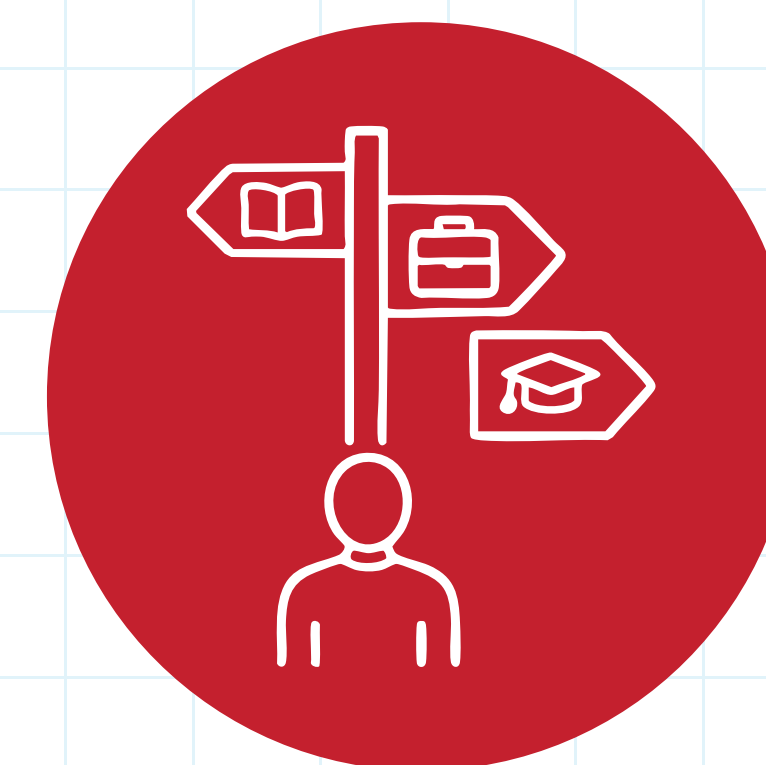
# Connecting 95th/Dan Ryan to 130th Street:

## How the Red Line Extension will benefit you



### Improving the Transit Experience

A quicker commute



### New Opportunities for Chicagoans

Connections to training, education, jobs and career building



### A Better System for Everyone

Equitable access to rail transit



### Connecting People and Investing in Neighborhoods

Get to where you want to go

# ● 103rd station



# ● 111th station



# ● Michigan station



# ● 130th station



# Project Schedule



●————●  
**PRE-CONSTRUCTION:** Demolition & Utility Relocations

●————●  
**TRACK CONSTRUCTION**

●————●  
**STATION CONSTRUCTION**

●————●  
**TESTING,  
COMMISSIONING  
AND TRAINING**

**PROJECT COMPLETE:** ★  
4 new stations are open for service.

*Construction schedule is subject to change.*

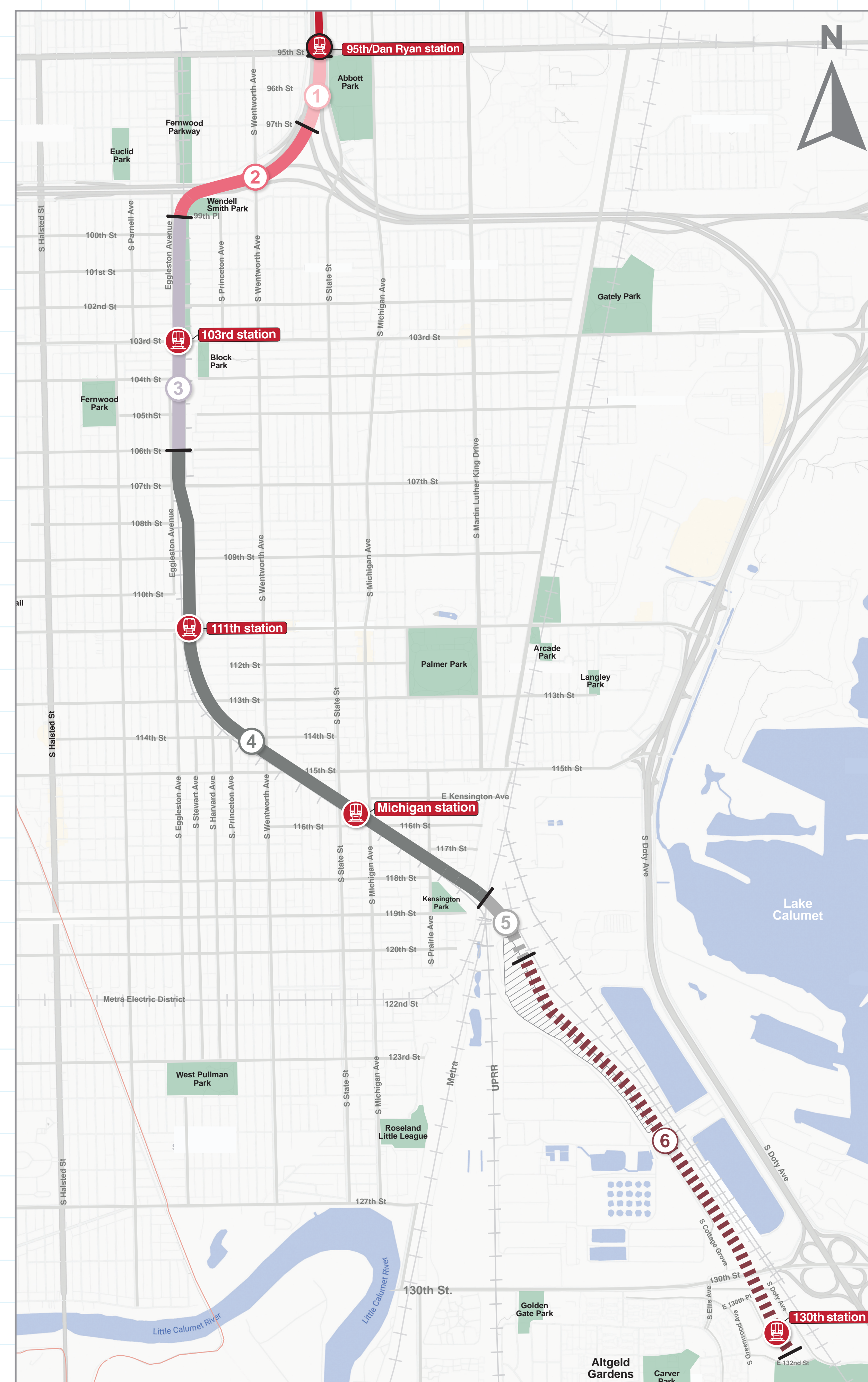


# Construction Approach

The construction of the Red Line Extension will occur in six zones. Work is expected to begin in Zone 4 near S. Calumet Avenue and E. 117th Street. The work will then proceed from south to north to 106th Place.

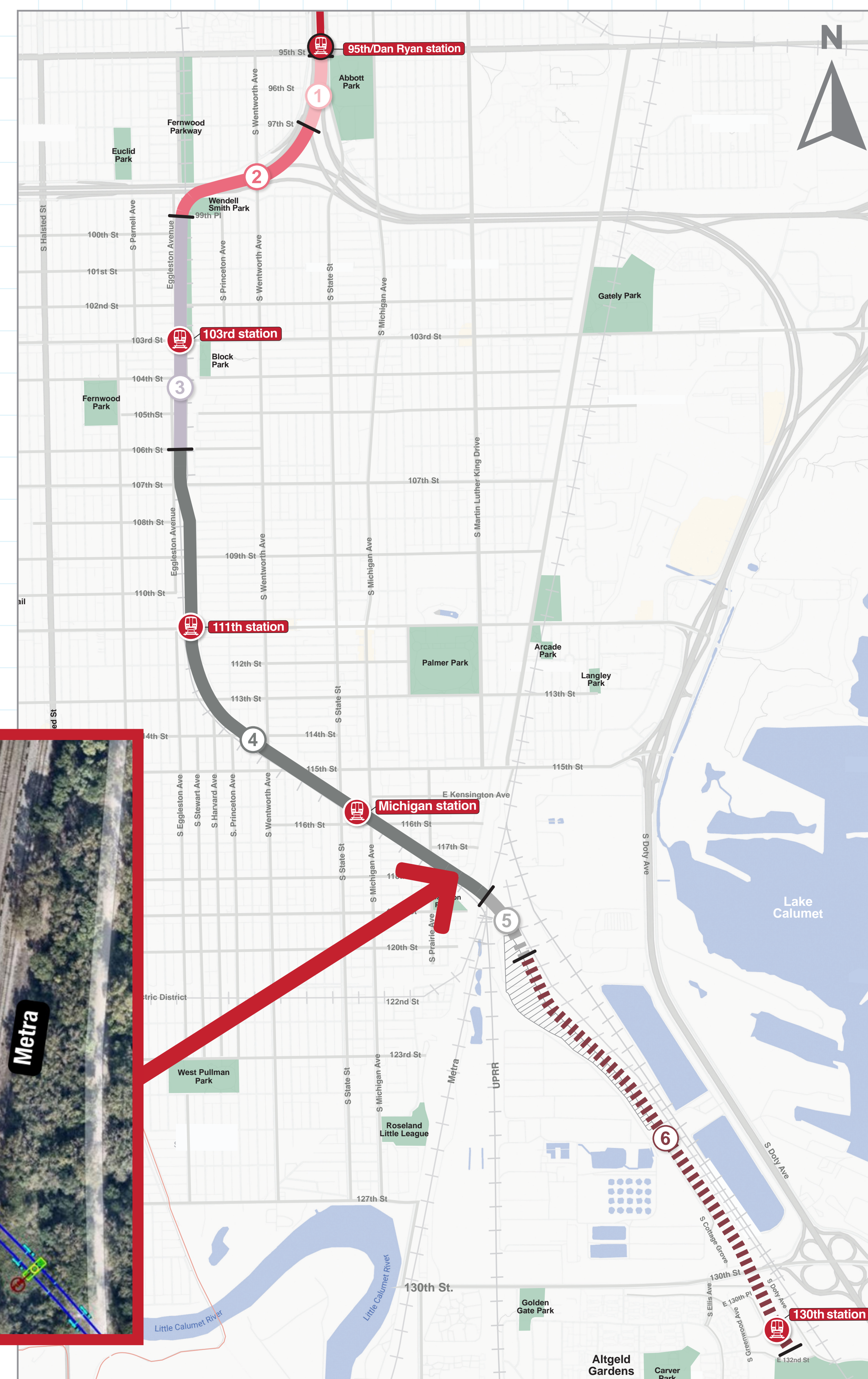
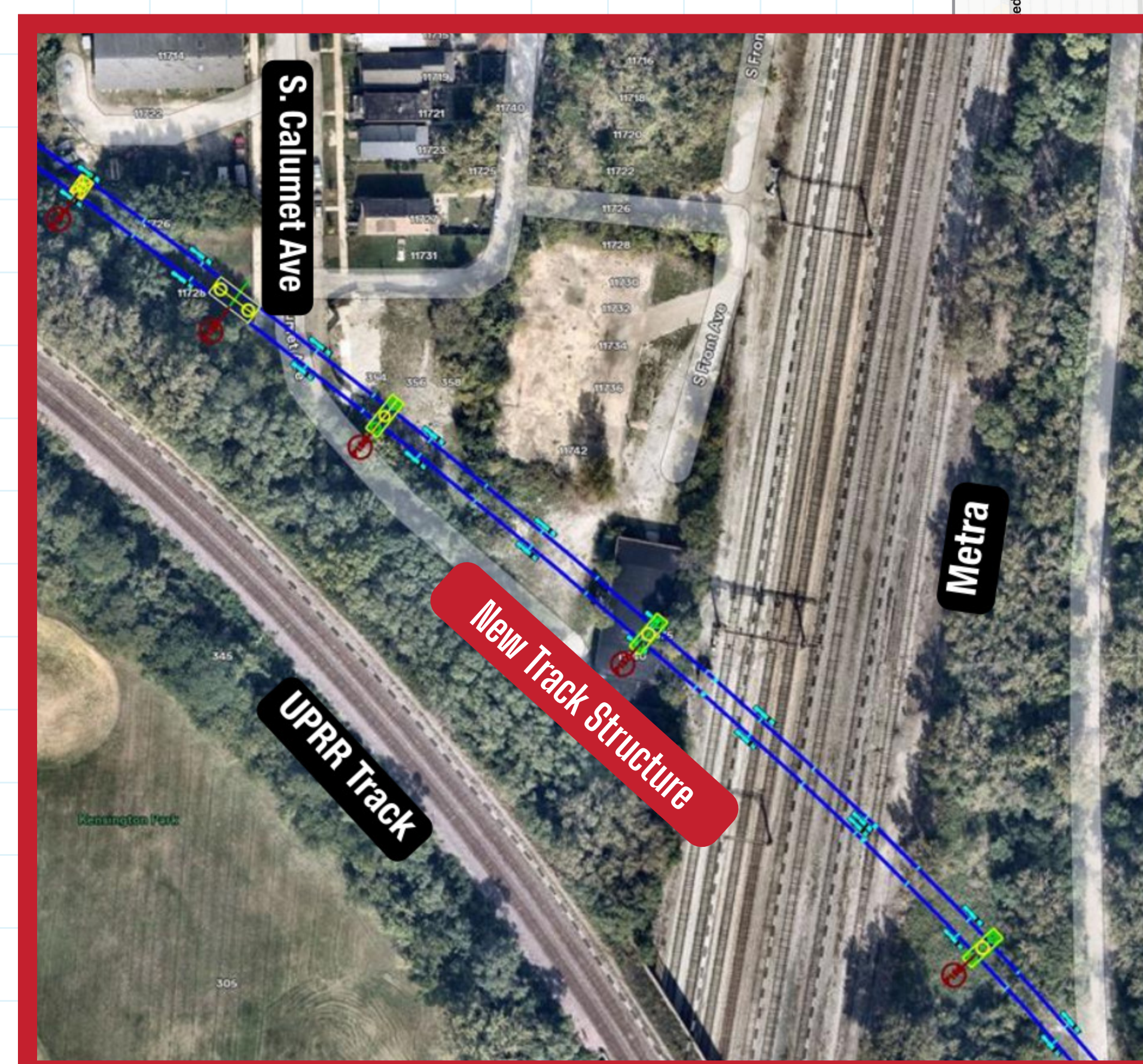
Work will occur across the multiple zones throughout construction and residents will receive advance notice of upcoming work.

- 1 95th Street/Dan Ryan to I-57 near 97th Street
- 2 I-57 near 97th Street to 99th Place
- 3 99th Place to 106th Place
- 4 106th Place to 118th Street
- 5 118th Street to 120th Place
- 6 120th Place to 132nd Street



# Construction Approach

- Construction will begin near S. Calumet Avenue and E. 117th Street.
- Foundation drilling to support the new track structure.
- Work will precede from south to north.



# Construction Approach

**Zone 6** (120th Place to 132nd Street)

## 2026 Activities & Beyond

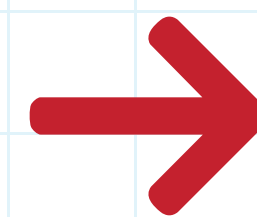
- **Spring 2026:** Site preparation for yard and shop construction
- **Winter 2026 to Fall 2027:** Utilities and preparatory work
- **Spring 2027 to Fall 2028:** 130th Street bridge construction
- **Spring 2027 to Spring 2028:** Grading and ductbanks
- **Summer 2027 to Spring 2029:** Construction of 130th Street Station
- **Spring 2028 to Summer 2029:** Track and systems construction
- **2030:** Project complete – new 130th Street station opens!



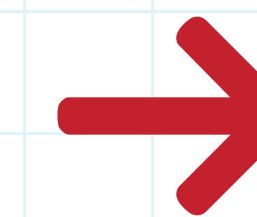
# What to Expect in the Next 6 Months



Site Preparation & Roadway Work



Drilling Deep Foundation  
for New Track Structure



Pouring Concrete for  
Foundation & Columns

# What to Expect:

## General Construction Equipment

### Wheel Loader



Used to move soil, gravel, and construction materials from the local streets to the construction areas.

### Excavator



Used for trenching, excavation, and utility work. Different sized excavators will be used throughout the project, depending on the task. Wheeled excavators may occasionally be seen moving through local streets.

### Dozer



Used to move soil, gravel, and materials. Dozers will be used to flatten the ground during construction of the haul routes.

### Manlift



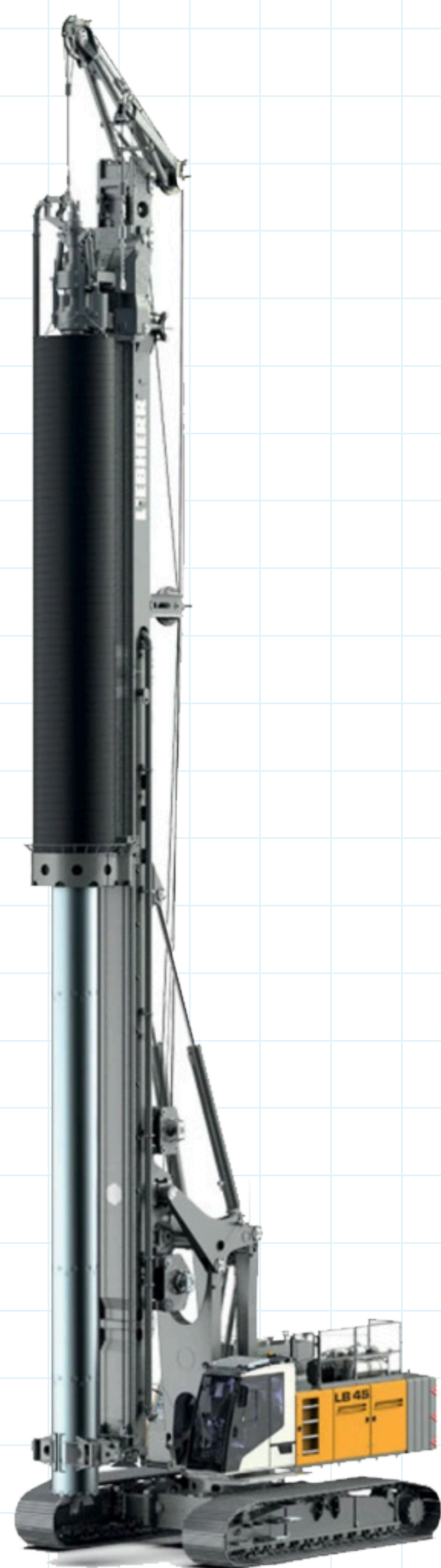
Safely raise workers to elevated areas for inspection, installation, or construction tasks. Lifts will be used frequently, especially to access bridge structures. They may be seen moving through local streets.

### Telehandlers



Safely move and lift smaller material around the construction site and to elevated areas for installation or other construction tasks. They may occasionally be seen moving through local streets.

# What to Expect: Drilling Equipment



## Drill Rig

A specialized drilling machine used to create deep, reinforced shafts in the ground that will form the foundations of the pre-cast concrete segmental bridges.

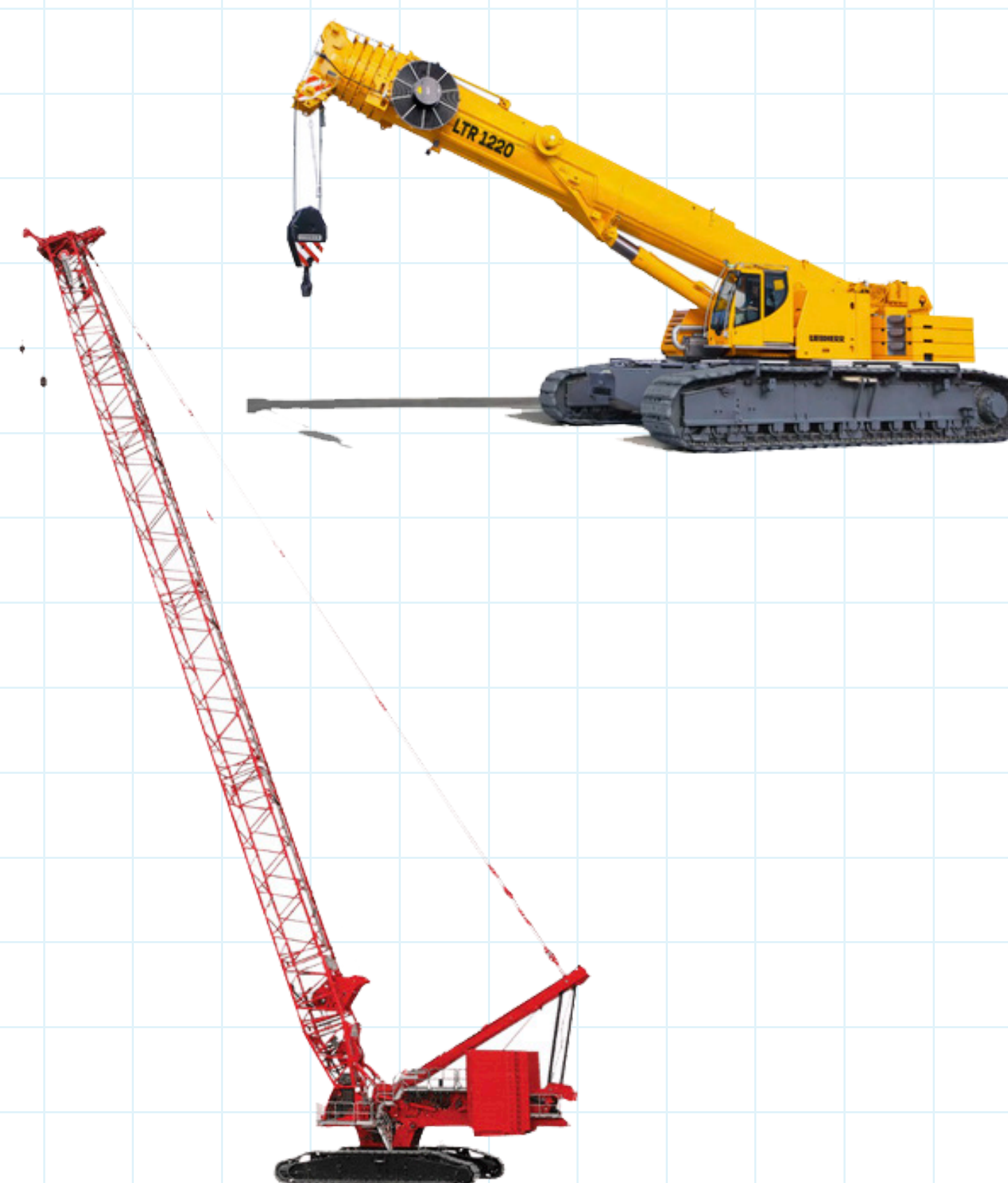
The shafts will be filled with rebar and concrete to form columns (piers) that are the foundations of the concrete bridges.



## Concrete Truck

Deliver and pump concrete into the drilled shafts, forming columns and pier caps.

Concrete trucks will also be used to construct concrete for stations, sidewalks, and other civil items.



## Cranes

There will be several different sizes of cranes used on the Red Line Extension, some very large.

Hydraulic cranes will be used to place rebar cages into drilled shafts, lift concrete bridge segments up to the gantry crane, move steel into place, and other heavy lifting tasks.

Heavy-lifting cranes will be used to lift and place large materials and equipment onto train tracks.



# Impacts to your community and how we will work to minimize them

## Impacts:

- Noise and vibration
- Street closures
- Alley closures
- Dust and truck traffic
- Traffic lane and sidewalk closures
- Nighttime lighting

## Mitigations:


- Noisiest activities will be performed during daytime hours whenever possible
- Noise mitigation with sound blankets, where feasible
- Dust mitigation including the use of water hoses
- Street sweeping
- Pest abatement
- Haul roads
- Use of glare-diffusing light fixtures or shields

# Stay Connected!

RLE Community Office will be opening in Spring 2026.

The office is located at 401 W. 111th Street!

Questions? Would you like to receive Red Line Extension updates?

-  [Facebook.com/CTARedExt](https://www.facebook.com/CTARedExt)
-  [@CTARedExt](https://www.instagram.com/CTARedExt)
-  [RedExtension@transitchicago.com](mailto:RedExtension@transitchicago.com)
-  [transitchicago.com/rle/](https://www.transitchicago.com/rle/)
-  [@CTARedLineExtension](https://www.youtube.com/@CTARedLineExtension)
-  312-772-2272

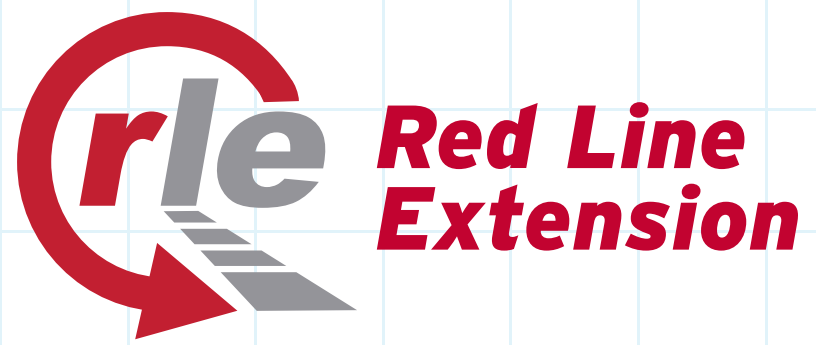


# RLE Small Business

CTA is committed to creating opportunities for small businesses to participate in CTA projects like the Red Line Extension (RLE) Project, including businesses that are certified as Small Business Enterprises (SBE) or Disadvantaged Business Enterprises (DBE) or are interested in learning how to become certified.

To register as a vendor, see contract opportunities and learn more, visit [transitchicago.com/diversity-programs](https://transitchicago.com/diversity-programs).





# CTA and Red Line Extension Project: Training and career opportunities.

How to get started  
CTA partners with  
workforce agencies to  
help individuals gain  
the skills they need  
to pursue careers.



## Workforce placement partners



**Chicago Women in Trades**  
Cwit.org | (312) 942-1444



**HIRE360**  
Hire360chicago.com | (312) 575-2500

## Pre-apprenticeship partners



**Chicago Women in Trades**  
Cwit.org | (312) 942-1444



**Metropolitan Family Services**  
Metrofamily.org | (312) 986-4000



**REVOLUTION  
WORKSHOP**

**Revolution Workshop**  
Revolutionworkshop.org | (708) 529-6288



**WVTCP**  
Walsh Vinci Transit Community Partners  
wvtcp-rle.com | (312) 563-5400