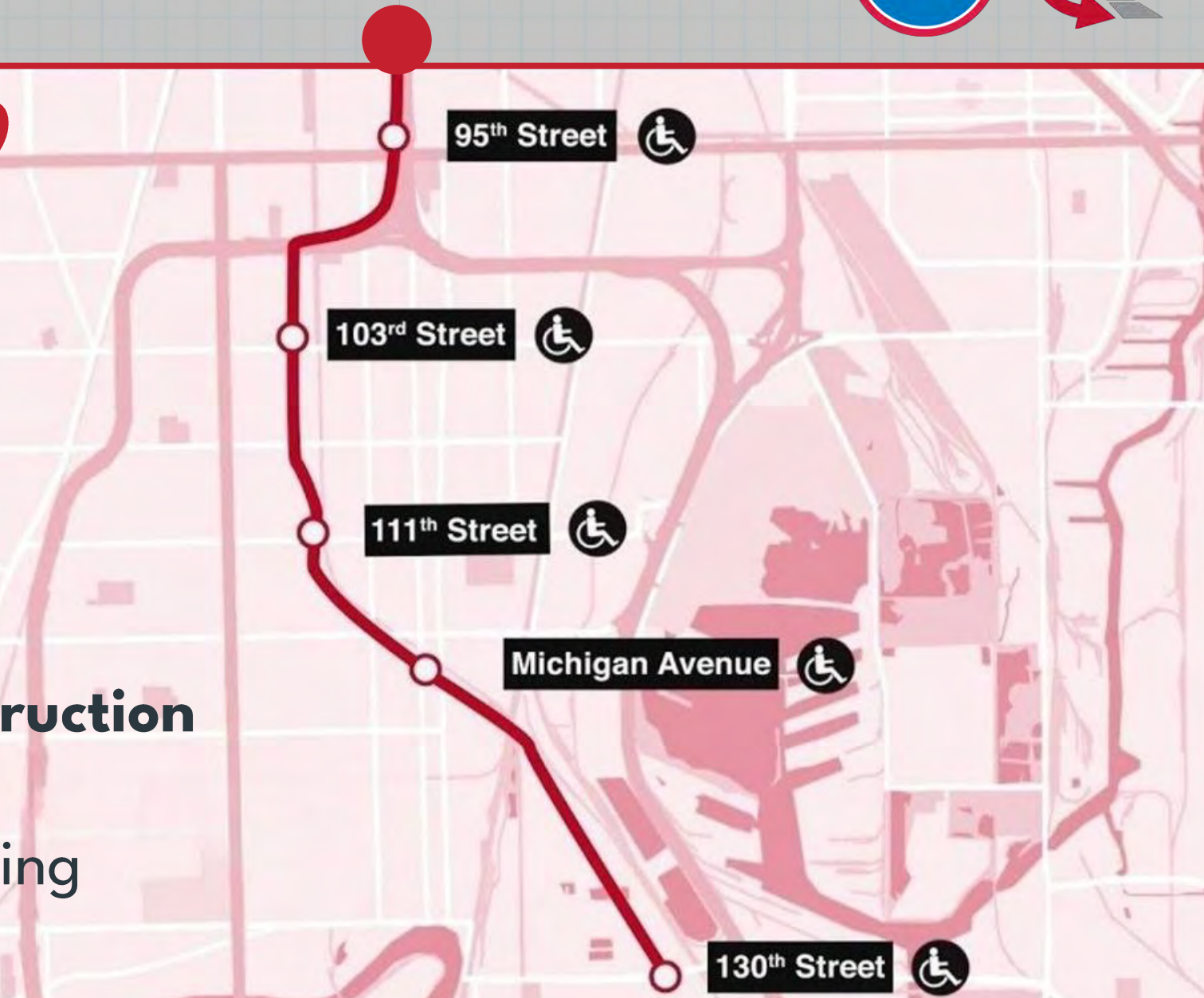




READY, SET, BUILD

**Red Line Extension Construction
Community Meeting**
Altgeld Gardens CYC Building
March 10, 2026



Meeting agenda

- Why we're building the Red Line Extension
- Project overview
- Project schedule
- Construction approach
- Track and station construction
- Construction impacts & mitigations
- Public way impacts
- Staying informed about what's coming





Red Line Extension

Project Overview

- 5.5-mile extension of the CTA Red Line, from the 95th Street Terminal to 130th Street
- Four new stations at 103rd Street, 111th Street, Michigan Avenue and 130th Street
- Parking and bus connections at each station
- New train storage yard and maintenance facility at 120th Street
- **Groundbreaking: Spring 2026**
- **Project completion: 2030**

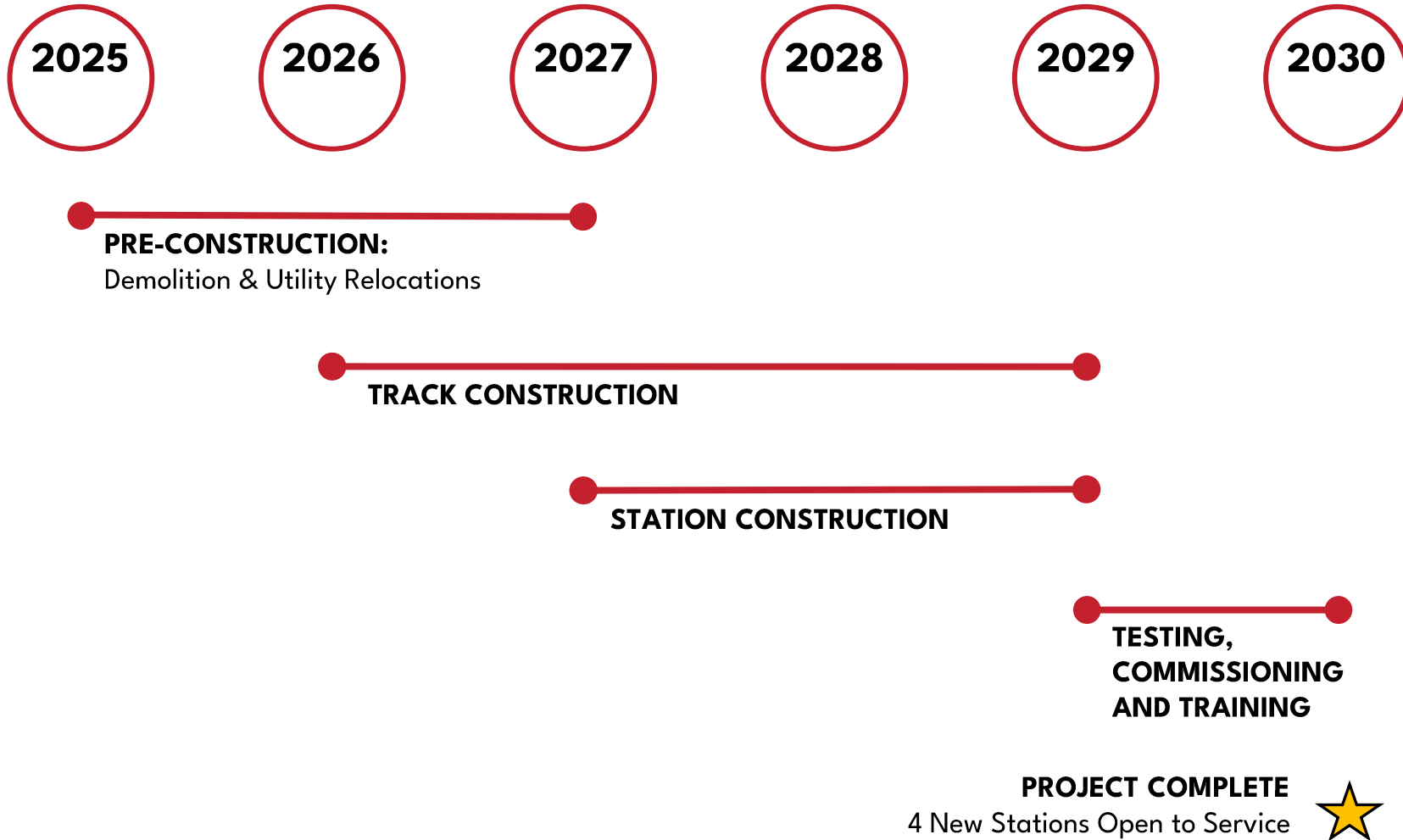


Red Line Extension

Construction starts spring 2026.
Here's how we will build it.



Project Schedule



Construction Approach

- The construction of the Red Line Extension will occur in six zones.
- Work will occur across the multiple zones throughout construction and residents will receive advance notice of upcoming work.
- Work is expected to begin in Zone 4 near S. Calumet Avenue and E. 117th Street and will then proceed from south to north to 106th Place.

1 95th Street/Dan Ryan to I-57 near 97th Street

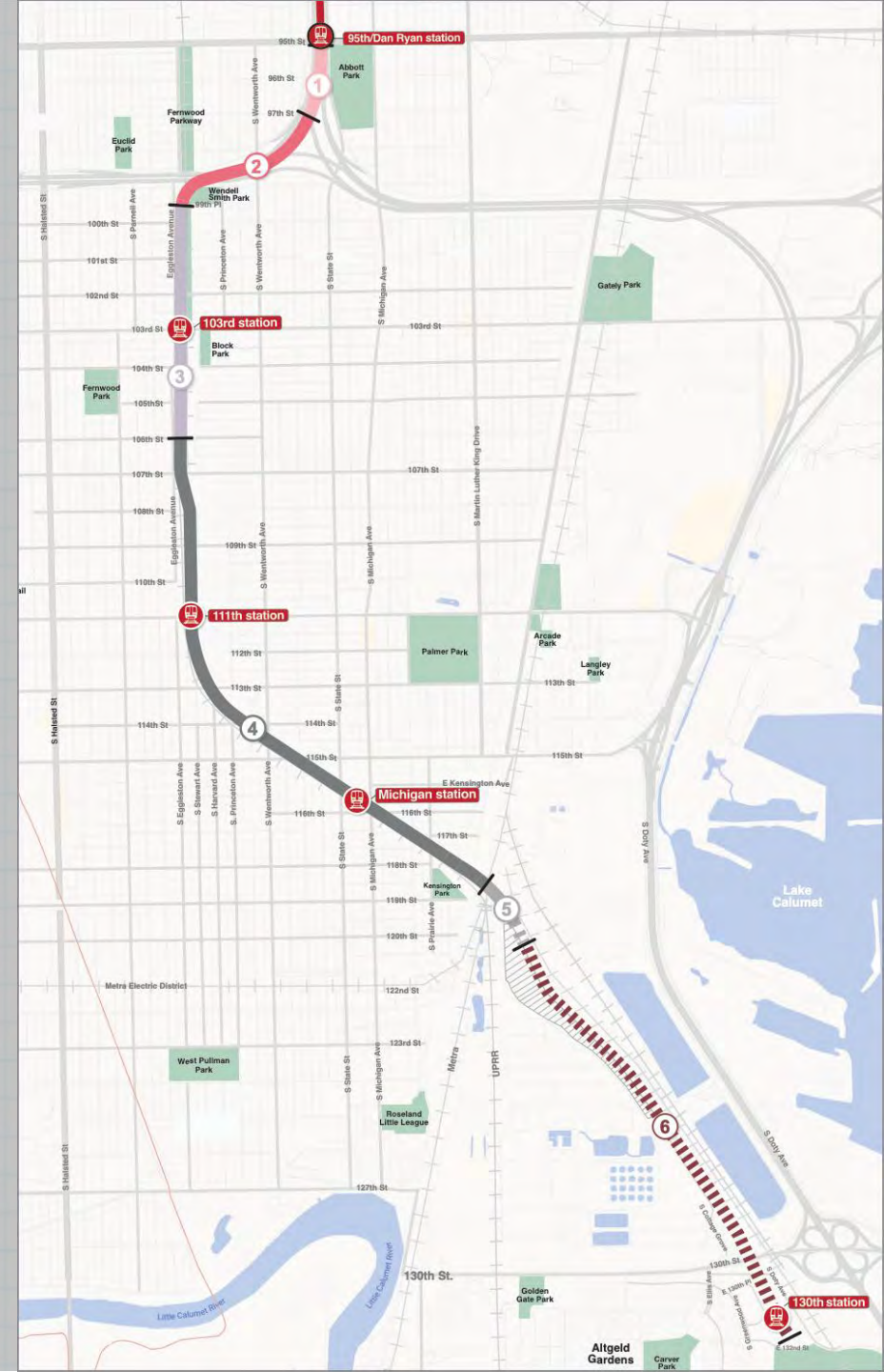
2 I-57 near 97th Street to 99th Place

3 99th Place to 106th Place

4 106th Place to 118th Street

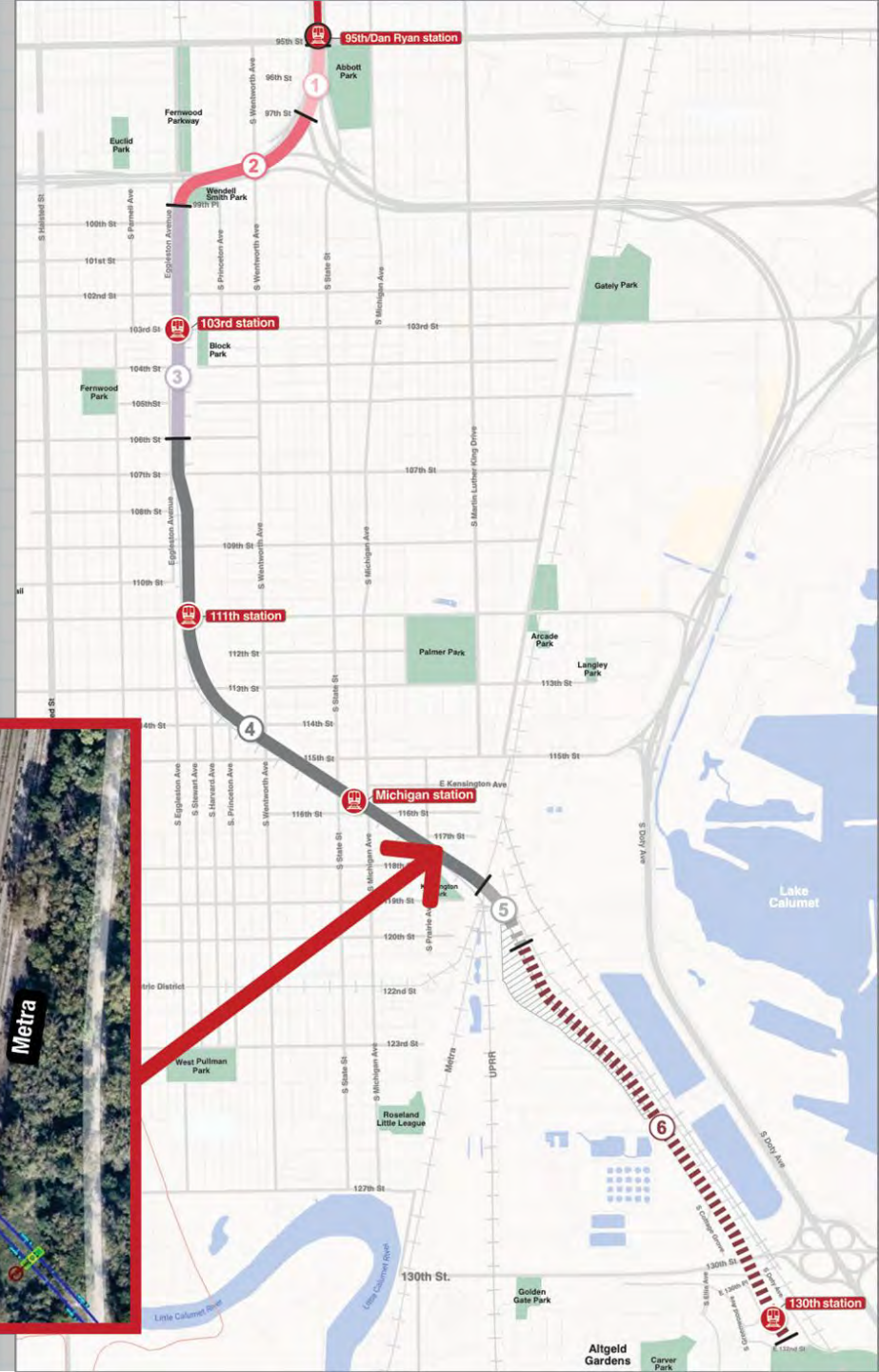
5 118th Street to 120th Place

6 120th Place to 132nd Street



Construction Approach

- Construction will begin near S. Calumet Avenue and E. 117th Street.
- Drill and pour foundations to support the new track structure.
- Work will precede from south to north.



Construction Approach

Zone 6 (120th Place to 132nd Street)

2026 Activities & Beyond

- Spring 2026:** Site preparation for new Red Line railyard and maintenance shop construction
- Winter 2026 to Fall 2027:** Utility and preparatory work
- Spring 2027 to Fall 2028:** 130th Street bridge construction
- Spring 2027 to Spring 2028:** Grading and ductbank work
- Summer 2027 to Spring 2029:** Construction of 130th station
- Spring 2028 to Summer 2029:** Track and systems construction
- 2030:** Project complete – new 130th station opens!





Impacts to your community and how we will work to minimize them

Impacts:

- Noise and vibration
- Street closures
- Alley closures
- Dust and truck traffic
- Traffic lane and sidewalk closures
- Nighttime lighting

Mitigations:

- Noisiest activities will be performed during daytime hours whenever possible
- Noise mitigation with sound blankets, where feasible
- Monitoring of noise and vibration levels
- Dust mitigation including the use of water hoses
- Street sweeping
- Pest abatement
- Haul roads
- Use of glare-diffusing light fixtures or shields

Public Way Impacts

CTA is committed to providing you with information throughout the work period, including what to expect, when to expect it and what we will do to minimize impacts.

- Daily closures
- Extended closures
- Alternative parking for affected residents
- Garbage and recycling maintained

Sign up to receive
Red Line Extension
Project alerts



Construction Activity Notice

We are performing work in preparation for extending the Red Line by 5.5 miles from the 95th Street Terminal to 130th Street. The Red Line Extension also includes building four new Red Line stations at 103rd, 111th, Michigan (near 116th) and 130th streets. To build the project, work will be performed that may affect your community. While progress sometimes comes with inconveniences, we will do our best to keep them to a minimum.

EXTENDED STREET CLOSURE

Dates: Monday, December 22, 2025, until completion

Locations: 11728 to 11740 S. Calumet Avenue

Work Hours: Continuous 24/7 closure for the duration of the RLE project

Work Activity: Red Line Extension Project Construction

Local Impact:

- S. Calumet Avenue from 11728 to 11740 S. Calumet Avenue will be closed to vehicular traffic.
- Additional Construction Activity Notices will be provided as work progresses.

If you have any questions or concerns about the RLE Project, please contact:
Redextension@transitchicago.com
or leave a message for callback:
312-772-2272

For more information about RLE, visit transitchicago.com/RLE



Stay Connected!

RLE Community office will open in 2026! The office is located at **401 W. 111th Street.**

Ways to follow us:

-  **Facebook:** [Facebook.com/CTARedExt](https://www.facebook.com/CTARedExt)
-  **Instagram:** @CTARedExt
-  **Email:** RedExtension@transitchicago.com
-  **Website:** transitchicago.com/rle/
-  **YouTube:** @CTARedLineExtension
-  **Phone:** 312-772-2272

