



Construction Project Briefing



September 10, 2025



Today's Presentation

Mega Projects

- Red Line Extension Project – (RLE)
- Red and Purple Modernization Project – (RPM)

Service Reliability & State of Good Repair

- Traction Power Upgrades - Canal Tie House, Barry and Damen Substations
- O'Hare Line – Harlem Station Bus Bridge Reconstruction

All Stations Accessibility Program – (ASAP)

- Lake Line Austin Station Project
- Racine Station ADA & Traction Power Improvement Project

Customer Facing Investments

- Western Brown Line Station Improvements
- Refresh & Renew Project



Project Title: RLE Project Overview

Chicago's most-traveled rail line with millions of rides each year, the Red Line carries over 30% of the CTA's rail customers and is one of a handful of U.S. transit lines that run 24/7. Extending the Red Line to 130th Street provides a long-awaited and much needed connection to jobs, education, and commerce, while also serving as a catalyst for economic development.

Justification of Need:

Priority of Project:	High
Total Project Budget:	\$5.75B
Construction Contract Value:	\$2,941,743,897 Awarded (DBC, Adv Demo WOs, AUR WOs) \$638,623,038 Pending Award
Earned to Date:	10% (of awarded contracts)
Percent Change Orders to Construction Contract:	0%
Percent Time Used:	12% (June 2025)
Funding Source:	FTA New Starts, CTA Bonds, Tax Increment Financing (TIF), Rebuild IL, Congestion Mitigation & Air Quality Improvement Program (CMAQ), Carbon Reduction Program (CRP)
Estimated Start Date/Estimated Length of Project:	2025 - 2030
Designer of Record:	TY Lin
Construction Manager/General Contractor:	Mainline / Yard & Shop Construction Manager – REDefined Southside Partners (RSP) Advance Work Construction Manager – SQN Associates, LLC



Project Title: RLE – Program Overview

Impact on Customers:	RLE provides a new, more direct connection to the Red Line – up to 30 minutes time savings to riders traveling from the future 130th Street station to the Loop and will facilitate easier access to multiple CTA rail lines and bus routes.
Benefit to System:	RLE is an investment that will result in strength and vitality for communities in the RLE area, benefits that will extend to the entire city.
Benefit to Community:	RLE will help Far South Side residents reliably access jobs and opportunities outside their neighborhoods, which includes jobs within communities along the RLE footprint and throughout the region.
Impact on Accessibility:	N/A
Customer Communication Need:	Construction Activity Notices

Comparable Projects:

RPM Phase One



Project Title: RLE – Project Overview



Project Office

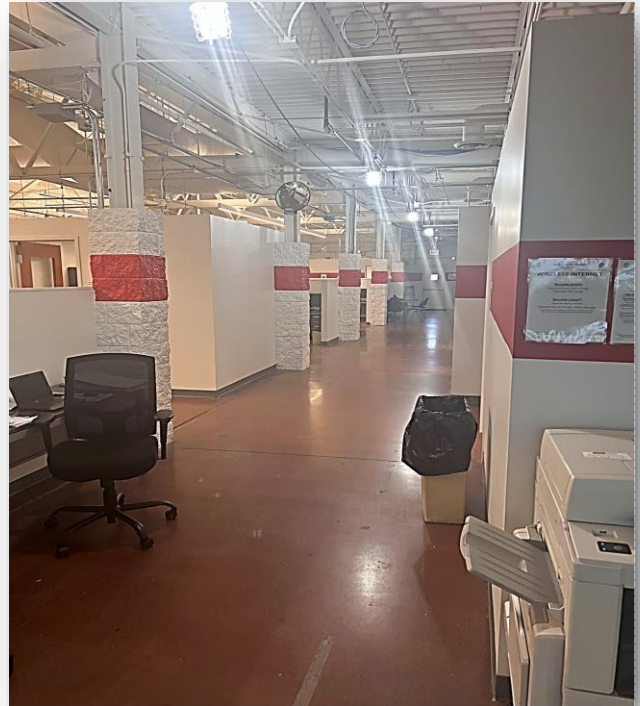


Project Title: RLE – Project Overview

Project Office Before



Project Office After





Project Title: RLE – Project Overview

Community Office





Project Title: RLE – Advance Demolition

Justification of Need:	Demolition Work Orders: Two Complex and Two Ordinary Work Order Contractors bidding to perform building demolition and environmental remediation at 85 parcels to facilitate future RLE Construction.
Priority of Project:	High
Total Project Budget:	Additional support costs as part of RLE \$5.75B project budget
Construction Contract Value:	\$11,845,986 Contracted to Date
Earned to Date:	14% (As of June 2025)
Percent Change Orders to Construction Contract:	0%
Percent Time Used:	34% (June 2025)
DBE:	All Work Orders to date have met or exceeded the DBE goal (30%)
Estimated Start Date/Estimated Length of Project:	NTP: 10/02/2024 Planned Substantial Completion: 09/12/2026
Designer of Record:	Epstein, Altus Works
Construction Manager/General Contractor:	Taza Construction, Foundation Mechanics, John Burns Construction and Kiewit Construction
Detailed Overview of Scope:	Demolish properties needed for RLE ahead of structure and station construction.



Project Title: RLE – Advance Demolition

Impact on Customers:	Periodic flagging activities while poles are being set/removed. Bus reroutes for street closures
Benefit to System:	Provides access to construct the Red Line Extension.
Benefit to Community:	Reduces risk and duration for the RLE Project.
Impact on Accessibility:	None
Customer Communication Need:	Construction Activity Notices will be provided to inform businesses and residents regarding temporary construction impacts (noise, dust, street/alley closures) throughout the advance work.

Comparable Projects:

RPM advance demolition contracts



Project Title: RLE – Advance Demolition

Progress

Phase	Description	Status
Design:	Advance Demolition Packages: Ordinary Work Orders Complex Work Orders	Ongoing Ongoing
Construction:	Advance Demolition: OWO-1: 4 parcels OWO-2: 2 parcels OWO-3: 12 parcels CWO-2: 33 parcels CWO-3: 5 parcels CWO-4: 6 parcels	100% complete as of July 2025 100% complete as of July 2025 58% complete as of July 2025 92% complete as of July 2025 30% complete as of July 2025 10% complete as of July 2025
Closeout:	Closeout activities to start upon achieving 50% completion on work order.	Ongoing



Project Title: RLE – CFD Training



50 properties available for CFD Training.

- Simulated Search & Rescue
- Fire Lines
- Forcible Entry (Roof, Windows)



Project Title: RLE



Advance Demolition



Project Title: RLE



Advance Demolition



Project Title: RLE – Design Build Contract

Justification of Need:	Walsh-VINCI Transit Community Partners will design and build the 5.5-mile extension of the Red Line from 95th Street to 130th Street, including four new fully-accessible stations. RLE marks one of the largest investments on the Far South Side in decades and is a critical investment for CTA to expand its rapid transit network.
Priority of Project:	High
Total Project Budget:	\$5.75B
Construction Contract Value:	\$2,926,510,885
Earned to Date:	10% (As of June 2025)
Percent Change Orders to Construction Contract:	0%
Percent Time Used:	12% (June 2025)
DBE:	Design Goal 25% Construction Goal 22%
Funding Sources:	FTA New Starts, CTA Bonds, Tax Increment Financing (TIF), Rebuild, IL, Congestion Mitigation & Air Quality Improvement Program (CMAQ 1), Carbon Reduction Program (CRP)
Estimated Start Date/Estimated Length of Project:	LNTP:10/15/24, NTP 1/13/25 / Construction Start Date: Spring 2026 / Est. Completion 2030
Designer of Record:	Walsh Vinci Transit Community Partners (WVTCP) / Systra-EXP JV
Construction Manager	REDefined Southside Partners (RSP)
Detailed Overview of Scope:	5.5 miles of new track extending the Red Line from 95 th Street to 130 th Street Four new stations – 103 rd Street, 111 th Street, Michigan Avenue and 103 rd Street



Project Title: RLE



Design Build Contract Tree Survey



Project Title: RLE



Design Build Contract



RLE Community Outreach



***Meet the Contractors event
April 8, 10 and 15***



***Roseland Hospital Mental
Health and Resource Fair
May 30***



RLE Community Outreach

*Back to School supply collection and distribution to RLE's aldermanic wards
August 2025*





RLE Highlighted Events

Meet the Contractors events (wards 9, 10, 21)	April 8, 10 and 15
Spring Citywide Career Fair	April 23
Roseland Hospital Mental Health Outreach and Resource Fair	May 30
Corliss High School Underground Railroad Commemorative Walk	June 3
Ninth Ward Juneteenth Celebration	June 18
RTA & Public Transit Accessibility – Disability Pride	July 7
Greater Roseland Chamber of Commerce Shop Roseland	July 12
Taste of Chicago Pullman Neighborhood Pop Up	July 22
Diversity Programs Q3 outreach event	July 23
115 th & Loomis Back-To-School Block Party	July 26
5 th District CAPS National Night Out	August 7
Altgeld Gardens Back-to-School Block Party	August 17



RLE Program Through July 31, 2025

RLE PROGRAM

Through July 31, 2025:

116

Unique DBE firms

25

Firms new to CTA

Trade Labor
Hours Worked

0



Trade Labor
Jobs Created

0

Trade Labor
Wages Earned

0

*Includes Program Manager, Preliminary Engineering, Construction Management, Demolitions, Design-Build, 120th Yard & Shop, and other support contracts



DBEs have been awarded

\$260,154,838



DBEs have been paid

\$44,331,772



DBE Attainment

12.35%



RLE Design-Build (Design) Through July 31, 2025

RLE Design-Build (Design)

Through July 31, 2025:

22

Unique DBE firms

7

Firms new to CTA



Total Design Jobs Created

531

Design Hours Worked

157,135

EDA



Attainment

3.30%

Goal

10%



DBE Goal

25%



DBEs have been awarded

\$35,800,096



DBE Awards %

16.58%



DBEs have been paid

\$1,120,981



DBE Attainment

4.86%



Project Title: RPM Phase One – Design-Build Contract

Justification of Need:	The RPM Phase One Project is greatly needed in order to expand capacity on CTA’s most utilized rail line and to replace aging infrastructure.	
Priority of Project:	High	
Total Project Budget:	\$ 2.1 Billion (excludes Transit TIF interest payments)	
Construction Contract Value:	Original - \$1,272,275,929 Current - \$1,421,783,997 (through Change Order 9)	
Earned to Date:	92.46%	
Percent Change Orders to Construction Contract:	11.8%	
Percent Time Used:	83.14%	
DBE:	Design: Goal: 20% / Commitment: 20.64% Construction Goal: 20% / Commitment: 20% Workforce Goals: 10% WIOA / 15% Apprentice / 35% EDA	Contractor is on track to meet the DBE goal
Funding Source:	CTA Financing, FTA Core Capacity Grant, CMAQ, TIFs	
NTP / Construction Start / Estimated Completion:	February 8, 2019 / October 2019 / December 2026	
Design-Build Contractor:	Walsh-Fluor Design-Build Team	
Owners Representative:	Elevated Solutions Partners	

Detailed Overview of Scope: RPM Phase One consists of the following elements that will allow CTA to expand service along the Red and Purple lines:

- Lawrence to Bryn Mawr Modernization (LBMM) – complete reconstruction and addition of ADA accessibility at four Red Line stations (Lawrence, Argyle, Berwyn, and Bryn Mawr) and reconstruction of 6 miles of track, structures, and viaducts from Leland Ave. to Ardmore Ave.
- Red-Purple Bypass (RPB) - Construction of a grade-separated bypass for the Brown Line at Clark Junction, just north of Belmont Ave. Includes realignment and reconstruction of 1.4 miles of mainline tracks and structure between Belmont station and south of Cornelia Ave.
- Corridor Signal Improvements (CSI) – Installation of new higher-capacity signal system on 23 miles of track between Belmont and Howard stations.



Project Title: RPM Phase One – Design-Build Contract

Phase	Description	Status
Administrative / Design:	<ul style="list-style-type: none"> ▪ Continued submittal/revisions of required management plans ▪ Continued Design Development in support of Signal Improvements ▪ Red-Purple Bypass (RPB) <ul style="list-style-type: none"> – Street, alleyway and lot reconstruction – NM structure painting – Belmont Historic Exhibit Installation – Removals of decommissioned systems cabling from previous RPB phases . 	<p>Ongoing Ongoing</p>
Construction:	<ul style="list-style-type: none"> ▪ Lawrence to Bryn Mawr Modernization (LBMM) <ul style="list-style-type: none"> – Bryn Mawr and Hollywood Aux Station <ul style="list-style-type: none"> – Punchlist Work – Berwyn and Aux Station <ul style="list-style-type: none"> – Punchlist Work – Argyle Station <ul style="list-style-type: none"> – Punchlist Work – Lawrence Station <ul style="list-style-type: none"> – Punchlist Work – Street and alleyway reconstruction – Bryn Mawr Temp B Station demolition – Argyle Temp B Station demolition – Structure aerial drainage – Performed stray current testing throughout LBMM for structural elements, track, and signal equipment ▪ Corridor Signal Improvements (CSI) <ul style="list-style-type: none"> – Continue installation of wayside signal equipment along NM1 and NM2 from Thorndale to Lawrence – Continued commissioning of signal equipment on NM1 and NM2 from Thorndale to Winona – Installed redundant communications fiber between Thorndale and Wilson – Set the new Addison Audio House – Continued installation of signal cabling and signal junction boxes throughout the Addison AH limits – Perform signal system punchlist activities in the RPB area – Continue to complete all required signal system tests in the LBMM area 	<p>Ongoing Ongoing Started Ongoing</p> <p>Ongoing</p> <p>Ongoing</p> <p>Ongoing</p> <p>Ongoing Ongoing Started Started Ongoing Complete</p> <p>Complete Complete Ongoing Complete Ongoing Ongoing Ongoing</p>



Project Title: RPM Phase One – Design-Build Contract

Red-Purple Bypass



**Installation of
Addison Audio
House**



Project Title: RPM Phase One – Design-Build Contract

Red-Purple Bypass



Alley A Restoration



Project Title: RPM Phase One – Design-Build Contract

Lawrence to Bryn Mawr Modernization



**Bryn Mawr
Temporary
Station
Demolition**



Project Title: RPM Phase One – Design-Build Contract


Lawrence to Bryn Mawr Modernization



**Argyle
Temporary
Station
Demolition**



Project Title: RPM Phase One – Design-Build Contract

Community Outreach	Major Activities	Timing
	<ul style="list-style-type: none">• Weekly Red-Purple Bypass Project updates for 44th ward• Lawrence to Bryn Mawr project updates for 46th, 48th wards• Argyle Night Markets• Monthly virtual office hours (August)• North Halsted Market Days	<p>Weekly</p> <p>Bi-weekly</p> <p>Aug. 7 & 14</p> <p>Aug. 9</p> <p>Aug.10</p>

CTA has represented the Red and Purple Modernization Phase One Project at many of the popular Argyle Night Market events.



RPM Phase One Design-Build DBE Attainment Through July 31, 2025

122

unique DBE firms

55

new to CTA



DBEs have been awarded

\$299,650,061



Have been paid

\$253,935,916.2

The prime contractor is on-track to meeting their 20% DBE goal

20%

DBE Awards

21.08%

DBE Payments

20.50%



RPM Phase One Design-Build Workforce Attainment Through July 31, 2025



2,910

RPM Phase I has created **2,910** construction trade labor jobs on the design-build team



Labor Hours Worked

2,633,252.35



Wages Earned

\$158,306,739.52

RPM Phase I Workforce Goals

Goals

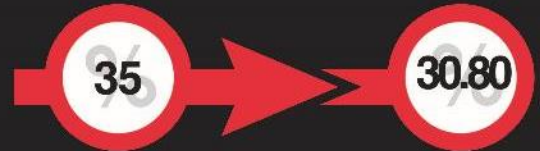
Attainment



Workforce Innovation & Opportunity Act (WIOA)



Apprentice



Economically Disadvantaged Area (EDA)



Highlighted Events

CISCO 4th Annual Union
Construction Trades Fair

Date: July 11th, 2025



300

Attendees

Participants got a firsthand look at Union Apprenticeship training programs and talked directly with Union reps who make our communities run — from electricians to ironworkers to plumbers and beyond.





Highlighted Events

Government Procurement Compliance (GPC) Forum

Date: July 22, 2025



40

Attendees

The GPC Forum is a strategic planning initiative designed to foster cross-agency collaboration through the formation of several working subcommittees.





Highlighted Events

Q3 Diversity Outreach Event

Date: July 24, 2025



52

Attendees

21

Primes

The event connected small businesses with prime contractors and sister agencies, highlighting upcoming CTA projects and subcontracting opportunities.





Highlighted Events

Start-Up Business Fireside Chat with Allies for Community Businesses

Date: August 26, 2025



21

Attendees

This fireside chat showcases how A4CB's community-driven partnerships open doors for startups by providing essential capital, coaching, and resources—empowering underserved entrepreneurs to turn challenges into opportunities and build sustainable, thriving businesses.





July 2025 Outreach Events

Cisco: 4th Annual Construction Trades Fair	July 11, 2025	Diversity Q3 Outreach Event	July 23, 2025
Shop Roseland Event - Greater Roseland Chamber of Commerce	July 12, 2025	IHCC 2025 Breakfast	July 24, 2025
37th Ward Procurement Workshop	July 16, 2025	Alderman Peter Chico Job Fair	July 24, 2025
Illinois Hispanic Chamber of Commerce (IHCC), Member-Exclusive Open House	July 17, 2025	African American Contractors Association (AACA) 2025 Contractors Day	July 26, 2025
Red and Purple Modernization (RPM) 4 Stations Official Grand Opening	July 21, 2025	2025 Driving Small Businesses the Distance: CTA DBE Certification Process	July 30, 2025
Government Procurement Compliance (GPC) Forum	July 22, 2025		



August 2025 Outreach Events

Black Women's Expo	August 1, 2025 - August 3, 2025	Illinois Hispanic Chamber of Commerce (IHCC) Summer Networking Event	August 21, 2025
2025 Pathways to Cook County Summit	August 6, 2025	Start-Up Business Fireside Chat with Allies for Community Business	August 26, 2025
United Center's 1901 Subcontractor Fair	August 12, 2025	Youth Peace Center of Roseland Community Event	August 26, 2025
Building Small Businesses Orientation	August 21, 2025	2025 Driving Small Businesses the Distance: Strategic Business Planning	August 27, 2025



Project Title: Traction Power Upgrades – Canal Tie House, Barry and Damen Substations

The CTA has identified additional traction power demands based on results from the Blue Line Load Flow study and determined that three (3) areas along the blue line O'Hare branch and Dearborn subway may experience problems with running the new fleet at the service levels proposed. To continue providing a reliable and safe service, it is necessary to build two (2) new traction power substations, one at Barry and the other at Damen with all their infrastructure support along with installing a new Tie Breaker house in the Dearborn subway. Also, the project includes the replacement of all traction power equipment at the Haymarket substation.

Justification of Need:

Priority of Project:	High
Total Project Budget:	\$122.8 Million
Construction Contract Value:	\$67.2 Million
Earned to Date:	99.0% (As of July 2025)
Percent Change Orders to Construction Contract:	16.7%
Percent Time Used:	100% (As of July 2025)
DBE:	Goal: 25% Commitment: 25.3% Workforce Goals: 10% Career Opportunity/ 8% Apprentice/ 25% EDA Contract is on track to meet the DBE goal
Funding Source:	CTA Bonds / Rebuild Illinois
Estimated Start Date/Estimated Length of Project:	NTP: October 20, 2021, Contract Substantial Completion March 31, 2025/Estimated Substantial Completion September 15, 2025
Designer of Record:	TYLin
Construction Manager/General Contractor:	WSP / John Burns Construction



Project Title: Traction Power Upgrades – Canal Tie House, Barry and Damen Substations

Impact on Customers:	Minor service disruptions during track access occurrences.
Benefit to System:	The new Traction Power Substation will increase service reliability to the Blue Line.
Benefit to Community:	New buildings will enhance and will blend with the surrounding community and will benefit transit riders in the Blue Line with a safer and more reliable service.
Impact on Accessibility:	N/A
Customer Communication Need:	Construction Activity Notices.

Comparable Projects:

East Lake, Milwaukee & Illinois (ELMI) and Broadway substations



Project Title: Traction Power Upgrades – Canal Tie House, Barry and Damen Substations

Construction Progress

Phase	Description	Status
Haymarket Substation	<ul style="list-style-type: none">• Punchlist work	Ongoing
Canal Tie-House	<ul style="list-style-type: none">• Commission Tie-House• Interior Tie-House Build-Out• Cable connections to Tie-House• Punchlist work	Complete Complete Complete Ongoing
Damen Substation	<ul style="list-style-type: none">▪ Installation of External Traction Power Cables• Equipment Testing and Commissioning• Build building interior, flooring, rooms and finishes	Complete Complete Ongoing
Barry Substation	<ul style="list-style-type: none">• Installing substation Traction Power Equipment.• Build exterior walls and roof.• Build building interior, flooring, rooms and finishes	Ongoing Ongoing Ongoing
Belmont Crossover	<ul style="list-style-type: none">• Punchlist work.	Ongoing



Project Title: Traction Power Upgrades – Canal Tie House, Barry and Damen Substations



Canal Tie House Railing and Gate Installation



Project Title: Traction Power Upgrades – Canal Tie House, Barry and Damen Substations



**Barry Communication
Cable Installation**



Barry Switchgear Testing



Project Title: O'Hare Line – Harlem Station Bus Bridge Reconstruction

Justification of Need: The condition of the Harlem Station bus bridge was initially identified as an infrastructure need in 2013. At that time, CTA noted significant deterioration to the concrete deck, concrete piers, and structural steel support elements due to salt corrosion and water infiltration. More recently, critical defects caused by concrete deck expansion joint failure have been identified in the south pier. The bridge needs to be replaced before it becomes a safety hazard and has to be taken out of service.

Priority of Project:	Medium
Total Project Budget:	\$40.0 M
Construction Contract Value:	\$20.4 M
Earned to Date:	\$14.0M
Percent Change Orders to Construction Contract:	0
Percent Time Used:	109%
DBE:	DBE goal: 25%. DBE Firms: MW Powell, Highway Safety Corp., Argo Construction LLC, Vision Painting, Alpine Demolition, W.E.B. Production & Fabricating, AC Iron LLC, S & J Construction, Livewire Electrical Systems.
Funding Sources:	Rebuild Illinois, Federal 2020, Federal 2016, Surface Transportation Program (CMAP)s
Estimated Start Date/Estimated Length of Project:	GC NTP: September 5, 2023. Substantial Completion: March 8, 2025 (NTP + 550 days)
Designer of Record:	HNTB
Construction Manager/General Contractor:	CM: TranSystems/TY Lin JV. GC: John Burns Construction Company.



Project Title: O'Hare Line – Harlem Station Bus Bridge Reconstruction

Impact on Customers:	Minor changes in bus service and Park & Ride access for those who use the Harlem Blue Line Station on the O'Hare Branch. Rail service will not be impacted.
Benefit to System:	New bridge superstructure and interface between bridge and station, new concrete approaches, bridge deck, ADA-compliant curbs and sidewalks, new canopy on bridge. New bus operator bathroom facility, painting, improved drainage.
Benefit to Community:	Replacement of the bridge before it becomes unsafe will help ensure continuity of service on bus routes out of the O'Hare Line Harlem Station.
Impact on Accessibility:	New ADA-compliant curbs and sidewalks for improved accessibility.
Customer Communication Need:	Construction Activity Notices, coordination with Alderman, press releases.

Comparable Projects:

Montrose Bridge Replacement (IDOT).



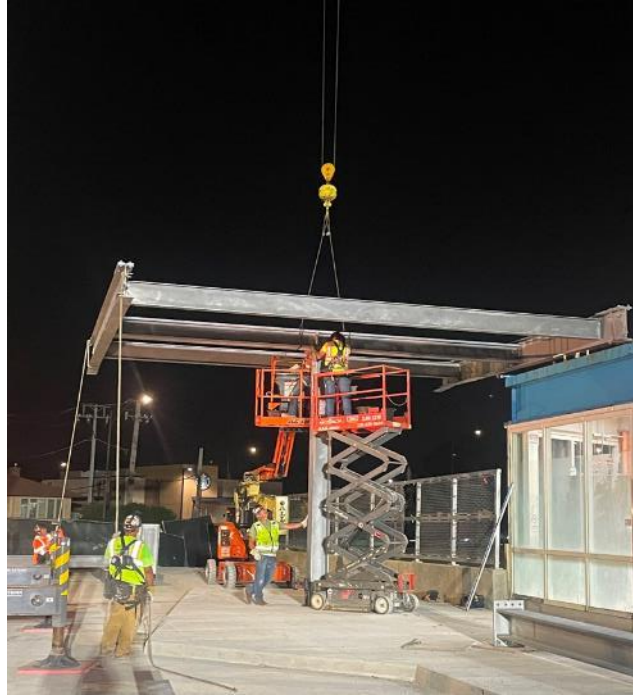
Project Title: O'Hare Line – Harlem Station Bus Bridge Improvements

Construction Progress

Phase	Description	Status
Construction	<ul style="list-style-type: none"><li data-bbox="211 350 515 375">• Install Bridge Canopy Steel<li data-bbox="211 423 468 448">• Painting Canopy Steel<li data-bbox="211 496 568 521">• Bus Canopy Comm and Electric<li data-bbox="211 570 459 595">• Install Bridge Conduit<li data-bbox="211 643 496 668">• Bridge Abutment Repairs<li data-bbox="211 716 619 741">• Directional Bore for Water and Sewer<li data-bbox="211 789 439 814">• Install Bus Shelters<li data-bbox="211 862 396 887">• Reopen Bridge	Completed Completed Fall 2025 Fall 2025 Fall 2025 Fall 2025 Fall 2025



Project Title: O'Hare Line – Harlem Station Bus Bridge Reconstruction



Installing Bridge Canopy Steel



Project Title: O'Hare Line – Harlem Station Bus Bridge Reconstruction



Painting Bridge Canopy Steel



Project Title: O'Hare Line – Harlem Station Bus Bridge Reconstruction



Grading for the North Approach Slab



Project Title: O'Hare Line – Harlem Station Bus Bridge Reconstruction



Removal of Station Ceiling



Project Title: O'Hare Line – Harlem Station Bus Bridge Reconstruction

Impact on Customers:	Minor changes in bus service and Park & Ride access for those who use the Harlem Blue Line Station on the O'Hare Branch. Rail service will not be impacted.
Benefit to System:	New bridge superstructure and interface between bridge and station, new concrete approaches, bridge deck, ADA-compliant curbs and sidewalks, new canopy on bridge. New bus operator bathroom facility, painting, improved drainage.
Benefit to Community:	Replacement of the bridge before it becomes unsafe will help ensure continuity of service on bus routes out of the O'Hare Line Harlem Station.
Impact on Accessibility:	New ADA-compliant curbs and sidewalks for improved accessibility.
Customer Communication Need:	Construction Activity Notices, coordination with Alderman, press releases.

Comparable Projects:
Montrose Bridge Replacement (IDOT).



Project Title: All Stations Accessibility Program

The CTA is committed to making its system completely accessible to people with disabilities in the next 20 years by becoming the first legacy transit system to make all of its train stations accessible.

Justification of Need:

Priority of Project:	High
Total Program Budget:	\$4.9 Billion
Total Funded Value:	\$740.8 Million
Under Contract:	% (As of November 2024)
Total Number of Stations Currently Accessible	104 (71%)
Total Number of Stations Currently Programmed for Upgrades	14 (81%)
Total Number of Elevators Programmed for Rehab	16 of 173
Estimated Start Date/Estimated Length of Project:	Phase 1: 2023-2027, Phase 2 (Funded): 2026-2028



Project Title: All Stations Accessibility Program

Funded Program Progress

Phase	Description	Status
Construction	Funded Station Projects	
	Lawrence (Red Line)	Completed
	Argyle (Red Line)	Completed
	Berwyn (Red Line)	Completed
	Bryn Mawr (Red Line)	Completed
	Racine (Blue Line)	On-going
	Austin (Green Line)	On-going
State/Lake (Loop)	Beginning	
Design	Funded Design Projects	
	California (Blue Line)	Complete
	Montrose (Blue Line)	On-going
	16 Elevator Rehabs	On-going
	Belmont (Blue Line)	Beginning
	Irving Park (Blue Line)	Beginning
	Pulaski (Blue Line)	Planning/Environmental
	Oak Park (Green Line)	Planning/Environmental
Ridgeland (Green Line)	Planning/Environmental	



Project Title: All Stations Accessibility Program – Lake Line Austin Station

Justification of Need: As part of our ongoing efforts to make the CTA system fully accessible to people with disabilities, improvements to the Lake Line Austin Station are essential. These upgrades will ensure the station complies with current provisions of the Americans with Disabilities Act (ADA). The project will also enhance the state of good repair of the station house building envelope and provide an alternate means of egress for the existing Austin Station.

Priority of Project:	High
Total Project Budget:	\$25.5 M
Construction Contract Value:	\$15.6 M
Earned to Date:	\$6.23 M
Percent Change Orders to Construction Contract:	2%
Percent Time Used:	79% based on projected Substantial Completion January 8, 2026
DBE:	DBE goal: 30%. DBE Firms: Highway Safety Corporation, Metropolitan Steel, Anderson Shah Roofing, Pinto Construction Group, Smith Painting Services, Wolf Electrical, Phoenix Business Solutions, Araiza Corporation, and Chicago Area Plumbing and Mechanical.
Funding Sources:	Rebuild Illinois and Federal 2021
Actual Start Date/Estimated Length of Project:	GC NTP: December 29, 2023; Projected Substantial Completion: January 8, 2026 (NTP + 741 days)
Designer of Record:	Epstein
Construction Manager/General Contractor:	CM: SQN. GC: John Burns Construction.



Project Title: All Stations Accessibility Program – Lake Line Austin Station

Impact on Customers:	There will be impact to CTA customers and surrounding community related to pedestrian and vehicular detours for utility replacements along Corcoran also CTA customers will be redirected to use temporary station entrance at Mason Ave. Platform closures and back rides will be necessary throughout construction.
Benefit to System:	System benefits include new elevator and elevator machine room, state of good repair improvements to the station house building envelope, new electrical room, new communications room, new janitor closet, new customer assistant kiosk and ADA compliant customer assistant restroom.
Benefit to Community:	Some Community benefits are the overall aesthetics of the Austin station will be improved. Increased station accessibility with the new elevator and associated ramps and sidewalk. Improved safety by reopening of the Auxiliary exit at Mason Ave. There will also be improvements to the streetscape.
Impact on Accessibility:	New ADA-compliant elevator, Auxiliary exit and sidewalks for improved accessibility.
Customer Communication Need:	Construction Activity Notices, GCR Coordination with City of Chicago Alderman, The Village of Oak Park and Website / Press releases.

Comparable Projects:

Lake Line – Oak Park and Ridgeland Stations



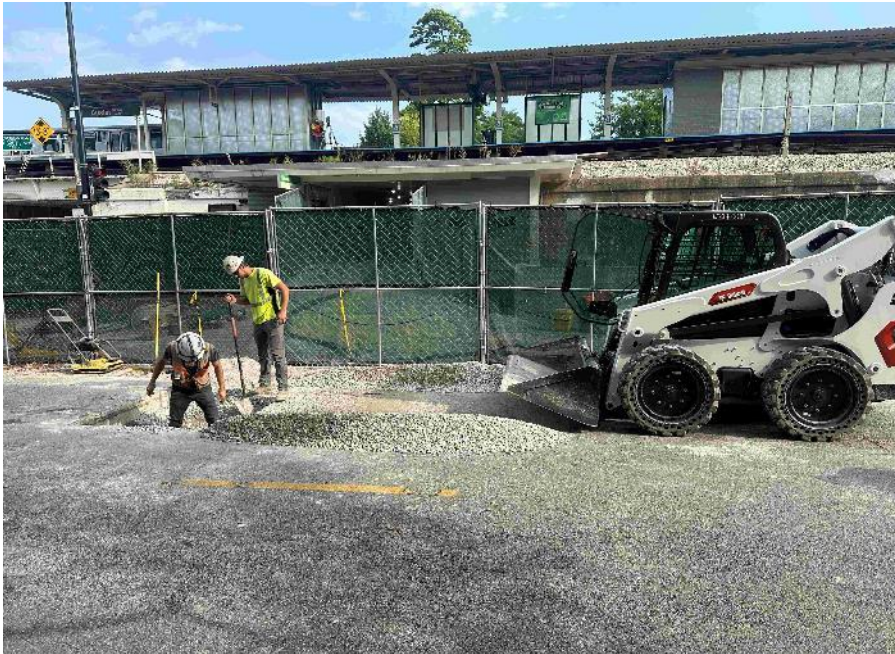
Project Title: All Stations Accessibility Program – Lake Line Austin Station

Construction Progress

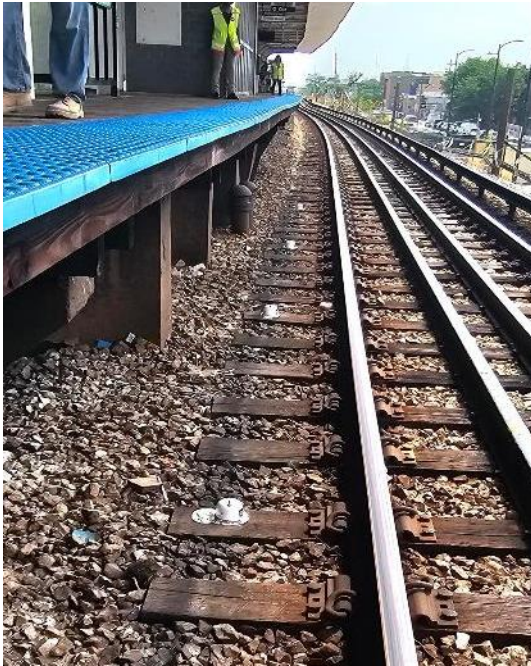
Phase	Description	Status
Construction	• Austin Stationhouse interior demolition complete	Completed
	• Austin Stationhouse sewer line demolition complete	Completed
	• UPRR rail monitoring system installation complete	Completed
	• CrownCastle telecommunications equipment temporary relocation	Completed
	• Contractor continued installing new underground sewer and electrical utilities	Ongoing
	• Austin / Corcoran traffic signal improvements	In Progress
	• Elevator micropile drilling and installation	In Progress
	• CTA Communications systems installation	In Progress



Project Title: All Stations Accessibility Program – Lake Line Austin Station



**Removing Abandoned Water Service
at Austin Stationhouse**



UPRR Track Monitoring System Installation



**Micropile Drilling at Austin Stationhouse
Elevator Location**



Project Title: Racine Station ADA & Traction Power Improvement Project

Justification of Need:

The existing Racine station is not accessible, and the ADA Improvements will add an elevator, and provide an ADA compliant ramp with adequate clearances for wheelchairs and mobility devices. In addition, to accommodate growth in ridership and maintain reliable service, the CTA procured newer generations of rail car fleets, which required traction power improvements consisting of constructing a new Morgan substation as well as upgrading existing traction power equipment within the Hermitage substation to meet higher power demands on the Forest Park branch of the Blueline.

Priority of Project:	High
Total Project Budget:	\$106,217,468
Construction Contract Value:	\$75,400,000
Earned to Date:	67% (thru July 2025)
Percent Change Orders to Construction Contract:	0%
Percent Time Used:	87% (thru July 2025)
DBE:	Goal: 25% Commitment: 25% Workforce Goals: 10% Career Opportunity, 15% Apprentice, 25% EDA The contract is on track to meet the DBE goal
Funding Source:	IDOT - Rebuild Illinois
Estimated Start Date/Estimated Length of Project:	NTP: 5/12/2023, Project Duration: 925 days (NTP through Substantial Completion)
Designer of Record:	HNTB
Construction Manager/General Contractor:	Congress Corridor Partners, a JV between (WSP/Ardmore) / F.H. Paschen, S.N. Nielsen & Associates



Project Title: Racine Station ADA & Traction Power Improvement Project

Impact on Customers:	<ul style="list-style-type: none">• Minor service disruptions during 54hr weekend TAOs.• No rail service between IMD and UIC-Halsted stations during weekend linecuts.• The Racine station will be OOS during the weekend linecuts.• No access to Racine stationhouse from Racine street until completely rebuild, the Loomis stationhouse will remain in service during this time.• Local bus shuttles will be provided during weekend linecuts.
Benefit to System:	<ul style="list-style-type: none">• The project will make the Racine station fully accessible.• The project will add more power to boost reliability and meet service demands.• The project will reduce the Racine station and Hermitage substation maintenance needs.
Benefit to Community:	<ul style="list-style-type: none">• When completed, the project is expected to accommodate all the accessibility needs for riders traveling through the Racine station utilizing various mobility devices.
Impact on Accessibility:	<ul style="list-style-type: none">• YES
Customer Communication Need:	<ul style="list-style-type: none">• GCR outreach with surrounding stakeholders.• Construction activity notices will be distributed as needed.• Advanced service disruption signs and posters will be installed as needed.

Comparable Projects:

The Illinois Medical District (IMD) Station Improvements



Project Title: Racine Station ADA & Traction Power Improvement Project



Racine Stationhouse Looking North



Project Title: Racine Station ADA & Traction Power Improvement Project



Racine Stationhouse Fare Array Granite Flooring



Project Title: Racine Station ADA & Traction Power Improvement Project



Racine Stationhouse Stairway Ceiling



Project Title: Racine Station ADA & Traction Power Improvement Project



Racine Elevator Installation



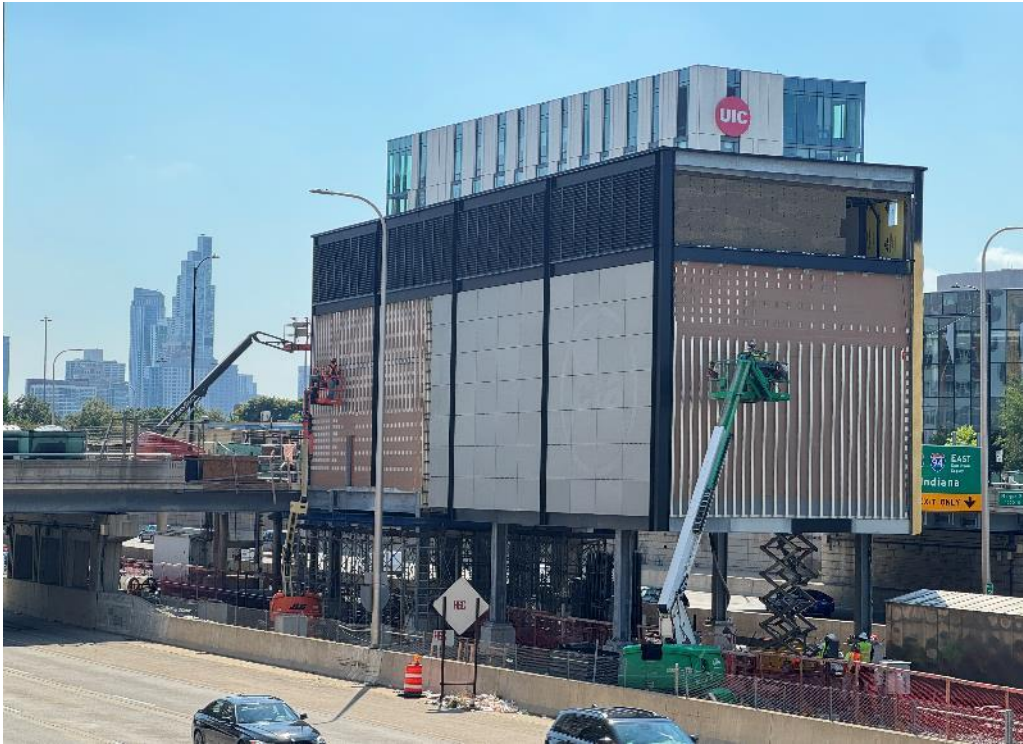
Project Title: Racine Station ADA & Traction Power Improvement Project



Loomis Sanitary Receiving Pit



Project Title: Racine Station ADA & Traction Power Improvement Project



Morgan Substation HPCP Progress



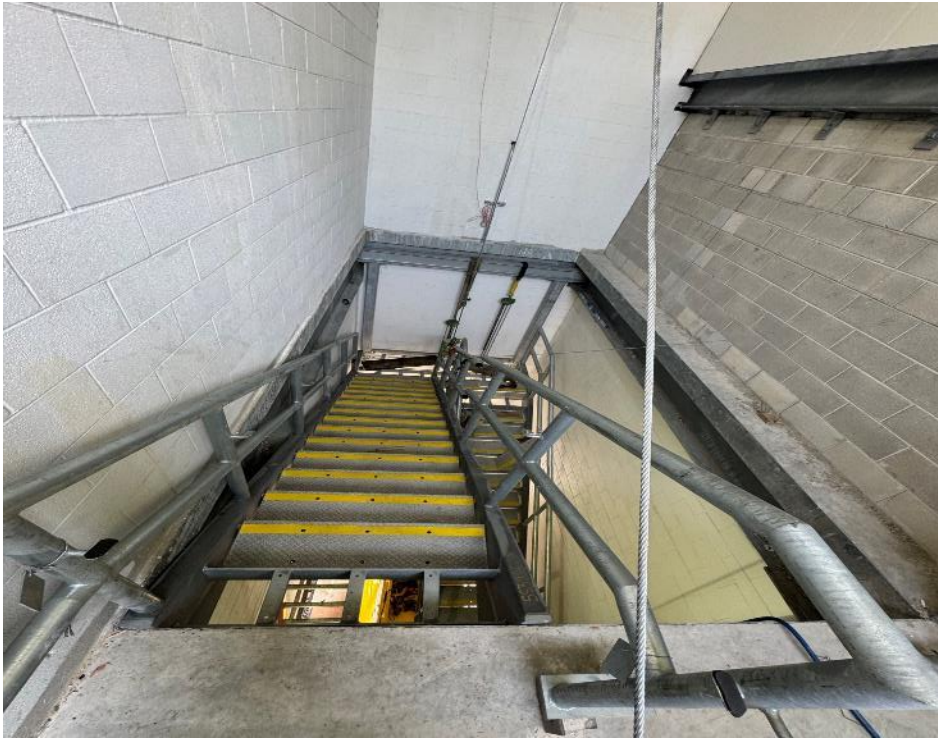
Project Title: Racine Station ADA & Traction Power Improvement Project



Morgan Substation Exhaust Fans Installation



Project Title: Racine Station ADA & Traction Power Improvement Project



Morgan Substation Exit Stairs 1



Project Title: Western Brown Line Station Improvements

Justification of Need:

Improvements to Ravenswood Western Station are necessary to bring the station into compliance with current provisions of the Americans with Disabilities Act (ADA), adapt to redeveloped adjacent storefronts, improve security, and extend the useful life of the station through replacement of deteriorated site, building, and platform components. This project is being delivered by a progressive design build delivery method, which is advantageous for both schedule and the design to budget requirement.

Priority of Project:	Medium
Total Project Budget:	\$30.0 M
Construction Contract Value:	\$19.0 M
Earned to Date:	\$10.5 M
Percent Change Orders to Construction Contract:	0
Percent Time Used:	76%
DBE:	DBE goal: 30%. DBE Firms: American Survey & Engineering, PC, Facet Engineering, GSG Consultants. Inc., Quigg Engineering.
Funding Sources:	Chicago Tax Increment Funding, Federal 2022, Federal 2023, CTA bonds
Estimated Start Date/Estimated Length of Project:	GC NTP1: May 11, 2023; NTP2: August 6, 2024; Substantial Completion: January 13, 2026 (NTP2 + 525 days)
Designer of Record:	CDM Smith
Construction Manager/General Contractor:	CM: AECOM. GC: FH Paschen.



Project Title: Western Brown Line Station Improvements

Impact on Customers:	CTA customers may be redirected to use alternate station entrance. Platform closures and back rides will be necessary. The work will also require some temporary bus reroutes and lane closures on Western and Lincoln.
Benefit to System:	State of good repair improvements to the building envelope, platform, platform guardrails and canopy, and interior finishes. New customer assistant booth, reconstructed operator bathroom facility.
Benefit to Community:	Increased station accessibility, improved safety through renovated sidewalks, walkway pavements, lighting, cameras, and signage. Overall improved appearance as a result of painting.
Impact on Accessibility:	New ADA-compliant curbs, bus turnaround islands, replacement of elevator cabs and sidewalks for improved accessibility.
Customer Communication Need:	Construction Activity Notices, coordination with Alderman, press releases.

Comparable Projects:

Quincy Loop Station Upgrade



Project Title: Western Brown Line Station Improvements

Construction Progress

Phase	Description	Status
Construction	Stage 2 Construction Building Permits Received Demo/Install New Masonry (above 1 st floor) Reconstruct Bus Driver Washroom Demo Bus Canopy and Pavement Resurface Station Floor Replace Elevator Cabs Glazing/Storefront Replacement (ground floor) Station House Ceiling Replacement Upgrade Station Electric Service	Late July On-going Early September Mid September October October October Q4 Early Q4



Project Title: Western Brown Line Station Improvements



Columns Enclosed for Repair Work



Barricade for Masonry Demolition



Project Title: Western Brown Line Station Improvements



Masonry Demolition At Track Level



Project Title: Western Brown Line Station Improvements



Ironworkers Torquing Bolts Below Platform



Project Title: Western Brown Line Station Improvements



CDOT Streetscape Project – Plaza Reconstruction



Project Title: Refreshed & Renewed

Justification of Need:

The Refreshed & Renewed Program is a CTA Facilities Maintenance implemented plan to promote safety, security and longevity to all CTA Facilities including, but not limited to: Rail Stations and Platforms, Bus Garages and Rail Shops across the system. The Refreshed & Renewed Program performs major improvement work at these transit operations facilities for both the customer and the internal needs of the Authority.

Priority of Project:	Medium
Total Project Budget:	\$6,500,000
Expended to Date:	\$1,506,896
Used last Month:	\$162,470
Funding Source:	Various
Estimated Start Date/Estimated Length of Project:	January 2021 to December 31, 2025
Contractor	CTA Forces

28 Rail Stations and 14 Bus-turn-arounds will receive lighting upgrades, painting and deep cleaning as part of this program for the current year.

28 Stations and 14 Bus-turn-arounds will have a detailed Scope of work which includes:

- Maintaining Cleanliness throughout public, as well as back-of-house areas
- Ensuring stations are graffiti free;
- Re-painting painted surfaces;
- Maintaining pathways of ingress and egress are clear of obstruction;
- LED lighting conversions and component;
- Removing obstructions from windows and store front systems that may impede natural light and safe viewing points.
- Address and repair any unsafe defects such as spalling concrete and rotted wooden platforms;
- Replacing outdated and damaged signage;
- Maintaining a warm/cool working environment.



Project Title: Refresh & Renew

Department	Description	Status
Facility Maintenance	<p><u>Rail Stations Full Program Scope 28 Stations (16 of 28 Completed)</u></p> <ul style="list-style-type: none">• Halsted-Green• Noyes-Purple• Harrison-Red• 43rd-Green• Kedzie-Orange• 95th-Red <p><u>Bus Turnaround Full Program (8 of 14 Completed)</u></p> <ul style="list-style-type: none">• Congress/Financial PI• Pulaski/104th• Division/Austin• Belmont/Halsted• Wilson/Ravenswood	<p>Completed On-Going On-Going Scheduled Scheduled Scheduled</p> <p>Completed Completed Completed Scheduled Scheduled</p>

Delay Explanation:

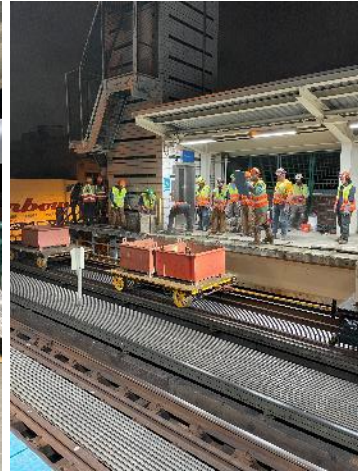
N/A



Project Title: Refresh & Renew

Before

After



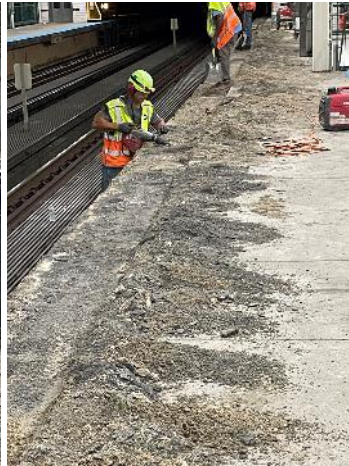
Halsted/63rd Green Line – Demolition



Project Title: Refresh & Renew

Before

After



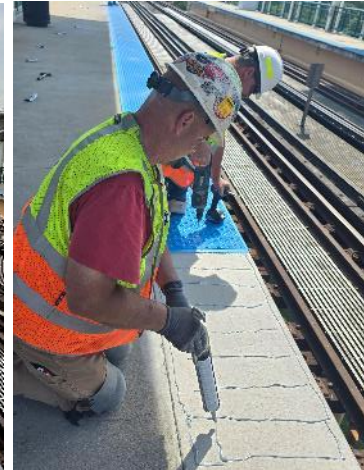
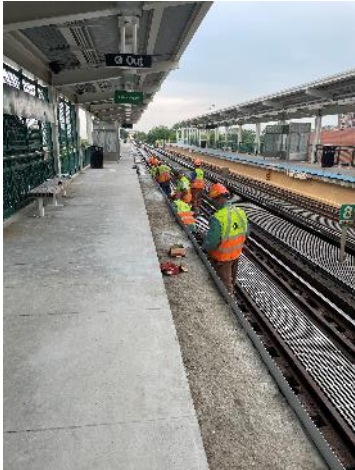
Halsted/63rd Green Line – Demolition



Project Title: Refresh & Renew

Before

After



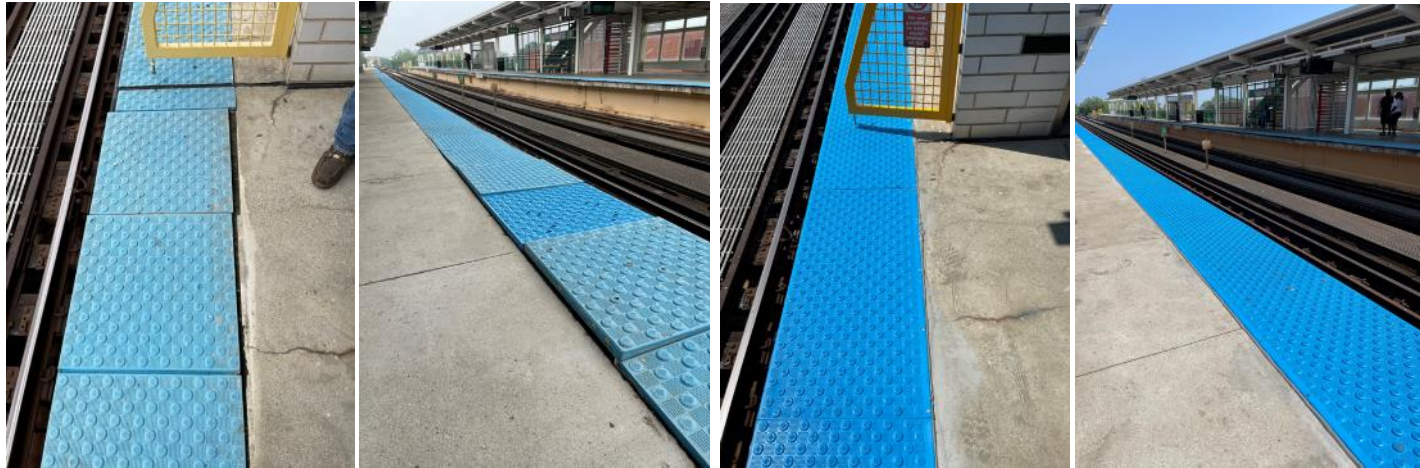
Halsted/63rd Green Line – Refreshing



Project Title: Refresh & Renew

Before

After



Halsted/63rd Green Line – SB Platform Tactile Replacement



Project Title: Refresh & Renew

Before

After



Halsted/63rd Green Line – SB Platform Tactile Replacement



Project Title: Refresh & Renew

Before

After



Halsted/63rd Green Line – SB Platform Tactile Replacement



Project Title: Refresh & Renew

Before



After



Pulaski/104th - BTA Head House Painting



Project Title: Refresh & Renew

Before



After



Pulaski/104th - BTA Sunken Manhole Repair



Project Title: Refresh & Renew

Before



After



Pulaski/104th - BTA Bollard & Concrete Repair



Project Title: Refresh & Renew

Before



After



Division/Austin – Curb Repair & Painting



Project Title: Refresh & Renew

Before



After



Division/Austin – Curb Repair & Painting