



Construction Project Briefing



January 14, 2026



Today's Presentation

Mega Projects

- Red Line Extension Project – (RLE)
- Red and Purple Modernization Project – (RPM)

Service Reliability & State of Good Repair

- Traction Power Upgrades - Canal Tie House, Barry and Damen Substations
- O'Hare Line – Harlem Station Bus Bridge Reconstruction

All Stations Accessibility Program – (ASAP)

- Lake Line Austin Station Project
- Racine Station ADA & Traction Power Improvement Project

Customer Facing Investments

- Western Brown Line Station Improvements



Project Title: RLE Project Overview

Chicago's most-traveled rail line with millions of rides each year, the Red Line carries over 30% of the CTA's rail customers and is one of a handful of U.S. transit lines that run 24/7. Extending the Red Line to 130th Street provides a long-awaited and much needed connection to jobs, education, and commerce, while also serving as a catalyst for economic development.

Justification of Need:

Priority of Project:	High
Total Project Budget:	\$5.75B
Construction Contract Value:	\$2,945,081,422 Awarded (DBC, Adv Demo WOs, AUR WOs) \$635,285,513 Pending Award
Earned to Date:	13% (of awarded contracts as of October 2025)
Percent Change Orders to Construction Contract:	0%
Percent Time Used:	18% (October 2025)
Funding Source:	FTA New Starts, CTA Bonds, Tax Increment Financing (TIF), Rebuild IL, Congestion Mitigation & Air Quality Improvement Program (CMAQ), Carbon Reduction Program (CRP)
Estimated Start Date/Estimated Length of Project:	2025 - 2030
Designer of Record:	TY Lin
Construction Manager/General Contractor:	Mainline / Yard & Shop Construction Manager – REDefine Southside Partners (RSP) Advance Work Construction Manager – SQN Associates, LLC



Project Title: RLE – Program Overview

Impact on Customers:	RLE provides a new, more direct connection to the Red Line – up to 30 minutes time savings to riders traveling from the future 130th Street station to the Loop and will facilitate easier access to multiple CTA rail lines and bus routes.
Benefit to System:	RLE is an investment that will result in strength and vitality for communities in the RLE area, benefits that will extend to the entire city.
Benefit to Community:	RLE will help Far South Side residents reliably access jobs and opportunities outside their neighborhoods, which includes jobs within communities along the RLE footprint and throughout the region.
Impact on Accessibility:	N/A
Customer Communication Need:	Construction Activity Notices

Comparable Projects:
RPM Phase One



Project Title: RLE – Advance Demolition

Justification of Need:	Demolition Work Orders: Two Complex and Two Ordinary Work Order Contractors bidding to perform building demolition and environmental remediation at 85 parcels to facilitate future RLE Construction.
Priority of Project:	High
Total Project Budget:	Additional support costs as part of RLE \$5.75B project budget
Construction Contract Value:	\$14,591,570 Contracted to Date
Earned to Date:	44% (As of October 2025)
Percent Change Orders to Construction Contract:	-0.1%
Percent Time Used:	51% (October 2025)
DBE:	All Work Orders to date have met or exceeded the DBE goal (30%)
Estimated Start Date/Estimated Length of Project:	NTP: 10/02/2024 Planned Substantial Completion: 09/12/2026
Designer of Record:	Epstein, Altus Works
Construction Manager/General Contractor:	Taza Construction, Foundation Mechanics, John Burns Construction and Kiewit Construction
Detailed Overview of Scope:	Demolish properties needed for RLE ahead of structure and station construction.



Project Title: RLE – Advance Demolition

Impact on Customers:	Periodic flagging activities while poles are being set/removed. Bus reroutes for street closures
Benefit to System:	Provides access to construct the Red Line Extension.
Benefit to Community:	Reduces risk and duration for the RLE Project.
Impact on Accessibility:	None
Customer Communication Need:	Construction Activity Notices will be provided to inform businesses and residents regarding temporary construction impacts (noise, dust, street/alley closures) throughout the advance work.

Comparable Projects:

RPM advance demolition contracts



Project Title: RLE – Advance Demolition

Progress - Update

Phase	Description	Status
Design:	Advance Demolition Packages: Ordinary Work Orders Complex Work Orders	Ongoing Ongoing
Construction:	Advance Demolition: OWO-1: 4 parcels OWO-2: 2 parcels OWO-3: 12 parcels CWO-2: 33 parcels CWO-3: 5 parcels CWO-4: 6 parcels CWO-5: 2 parcels	100% complete as of September 2025 100% complete as of September 2025 100% complete as of September 2025 98% complete as of November 2025 98% complete as of November 2025 40% complete as of November 2025 35% complete as of November 2025
Closeout:	Closeout activities to start upon achieving 50% completion on work order.	Ongoing



**Advance
Demolition
Ongoing**





Project Title: RLE – Design Build Contract

Justification of Need:	Walsh-VINCI Transit Community Partners will design and build the 5.5-mile extension of the Red Line from 95th Street to 130th Street, including four new fully-accessible stations. RLE marks one of the largest investments on the Far South Side in decades and is a critical investment for CTA to expand its rapid transit network.
Priority of Project:	High
Total Project Budget:	\$5.75B
Construction Contract Value:	\$2,926,510,885
Earned to Date:	13% (As of October 2025)
Percent Change Orders to Construction Contract:	0%
Percent Time Used:	18% (October 2025)
DBE:	Design Goal 25% Construction Goal 22%
Funding Sources:	FTA New Starts, CTA Bonds, Tax Increment Financing (TIF), Rebuild, IL, Congestion Mitigation & Air Quality Improvement Program (CMAQ 1), Carbon Reduction Program (CRP)
Estimated Start Date/Estimated Length of Project:	LNTP:10/15/24, NTP 1/13/25 / Construction Start Date: Spring 2026 / Est. Completion 2030
Designer of Record:	Walsh Vinci Transit Community Partners (WVTCP) / Systra-EXP JV
Construction Manager	REDefine Southside Partners (RSP)
Detailed Overview of Scope:	5.5 miles of new track extending the Red Line from 95 th Street to 130 th Street Four new stations – 103 rd Street, 111 th Street, Michigan Avenue and 103 rd Street

Progress

Phase	Description	Status
Design:	<ul style="list-style-type: none"> • Design Progress Meetings 	Ongoing
	<ul style="list-style-type: none"> • Intermediate Designs for Stations 	Ongoing
	<ul style="list-style-type: none"> • Final Design of Segment 4 Guideway Substructure 	Ongoing
	<ul style="list-style-type: none"> • Adjacent Contracts Interface Coordination 	Ongoing
	<ul style="list-style-type: none"> • Segments 1 & 2 Tree Removal Package Issued for Construction 	Completed
	<ul style="list-style-type: none"> • Utility, Railroad and Third-Party Coordination 	Ongoing
Pre-construction	<ul style="list-style-type: none"> • Pre-Construction Progress Meetings 	Ongoing
	<ul style="list-style-type: none"> • Geotechnical Investigations and Field Survey 	Ongoing



Project Title: RLE – Design Build Contract

Contractor Office Trailers Installation





Project Title: RLE - Design Build Contract



**RLE011
Wall and
Footing
Demolition**



RLE Community Outreach

Members of the Red Line Extension outreach team gathered at the Red Line's 95th Street Terminal to distribute winter rider kits, including project information and branded gloves.





RLE Community Outreach



Members of the Red Line Extension outreach team gathered at the Red Line's 95th Street Terminal to distribute winter rider kits, including project information and branded gloves.





RLE Highlighted Events

CTA Workforce Q4 Event	Nov 05
RLE Project Advisory Council Meeting	Nov 07
Fifth District Faith Based Subcommittee Meeting	Nov 13
CTA Diversity Q4 Event	Nov 19
RLE Winter "Rider Kit" Distribution event	Dec 09
Altgeld Garden Holiday Turkey Distribution Event	Dec 17
CTA Holiday Basket Distribution (with stops near RLE footprint)	Dec 19
RLE Inside Track Alert, activity digital digest	Weekly
RLE Project "Hotline" response	Ongoing



Project Title: RPM Phase One – Design-Build Contract

Justification of Need:	The RPM Phase One Project is greatly needed in order to expand capacity on CTA's most utilized rail line and to replace aging infrastructure.	
Priority of Project:	High	
Total Project Budget:	\$ 2.1 Billion (excludes Transit TIF interest payments)	
Construction Contract Value:	Original - \$1,272,275,929 Current - \$1,421,783,997 (through Change Order 9)	
Earned to Date:	93.7%	
Percent Change Orders to Construction Contract:	11.8%	
Percent Time Used:	87.4%	
DBE:	Design: Goal: 20% / Commitment: 20.64% Construction Goal: 20% / Commitment: 20% Workforce Goals: 10% WIOA / 15% Apprentice / 35% EDA	Contractor is on track to meet the DBE goal
Funding Source:	CTA Financing, FTA Core Capacity Grant, CMAQ, TIFs	
NTP / Construction Start / Estimated Completion:	February 8, 2019 / October 2019 / December 2026	
Design-Build Contractor:	Walsh-Fluor Design-Build Team	
Owners Representative:	Elevated Solutions Partners	

Detailed Overview of Scope: RPM Phase One consists of the following elements that will allow CTA to expand service along the Red and Purple lines:

- Lawrence to Bryn Mawr Modernization (LBMM) – complete reconstruction and addition of ADA accessibility at four Red Line stations (Lawrence, Argyle, Berwyn, and Bryn Mawr) and reconstruction of 6 miles of track, structures, and viaducts from Leland Ave. to Ardmore Ave.
- Red-Purple Bypass (RPB) - Construction of a grade-separated bypass for the Brown Line at Clark Junction, just north of Belmont Ave. Includes realignment and reconstruction of 1.4 miles of mainline tracks and structure between Belmont station and south of Cornelia Ave.
- Corridor Signal Improvements (CSI) – Installation of new higher-capacity signal system on 23 miles of track between Belmont and Howard stations.



Project Title: RPM Phase One – Design-Build Contract

Phase	Description	Status
Administrative / Design:	<ul style="list-style-type: none"> ▪ Continued submittal/revisions of required management plans ▪ Continued Design Development in support of Signal Improvements 	Ongoing Ongoing
Construction:	<ul style="list-style-type: none"> ▪ Red-Purple Bypass (RPB) <ul style="list-style-type: none"> – Street, alleyway and lot reconstruction – Belmont Historic Exhibit Installation – Removals of decommissioned systems cabling from previous RPB phases – NM and Flyover Drip Pan Installation. – Permanent zip tying of finalized signal cable bundles ▪ Lawrence to Bryn Mawr Modernization (LBMM) <ul style="list-style-type: none"> – Bryn Mawr and Hollywood Aux Station <ul style="list-style-type: none"> – Punchlist Work – Berwyn and Aux Station <ul style="list-style-type: none"> – Punchlist Work – Argyle Station <ul style="list-style-type: none"> – Punchlist Work – Lawrence Station <ul style="list-style-type: none"> – Punchlist Work – Street and alleyway reconstruction – Structure aerial drainage – Structure sealer and anti-graffiti application – Site fencing installation – Landscaping – Substantial Completion walks for the entire project – Additional stray current testing throughout LBMM for structural elements, track, and signal equipment ▪ Corridor Signal Improvements (CSI) <ul style="list-style-type: none"> – Perform signal system punchlist activities in the RPB area including removal of decommissioned cable – Continue to complete all required signal system tests in the LBMM area – Decommissioned the Sheridan Audio House 	Ongoing Ongoing Ongoing Ongoing Ongoing Ongoing Ongoing Ongoing Ongoing Upcoming Ongoing Ongoing Ongoing Ongoing Ongoing Ongoing

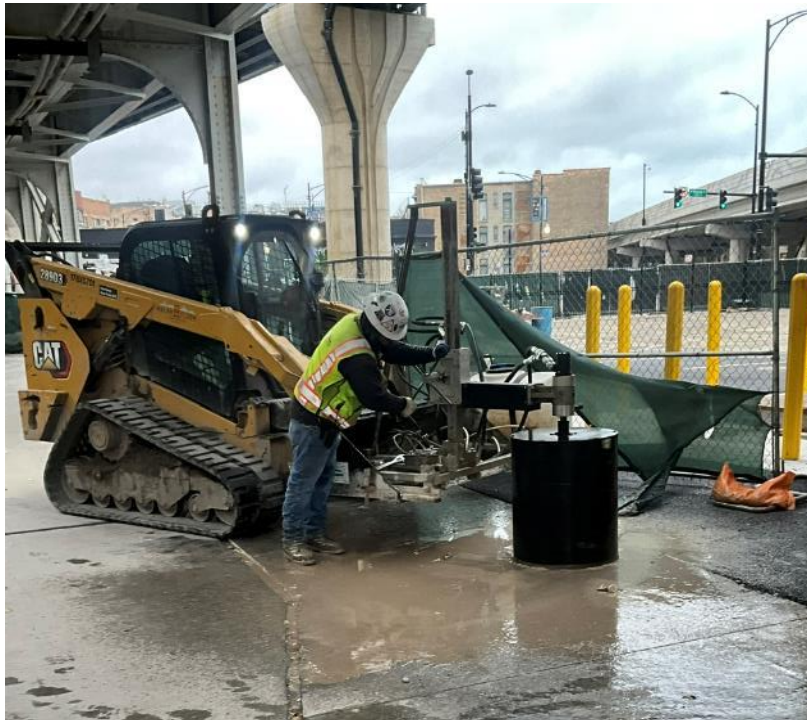


Red-Purple Bypass

**Fencing
installation
near Clark St.**



Red-Purple Bypass



**Coring in alley
for Ground
Wells**



Red-Purple Bypass



**Sod planting at
Vautravers**



Lawrence to Bryn Mawr Modernization



**New bench
installation
Lawrence**



Project Title: RPM Phase One – Design-Build Contract

Lawrence to Bryn Mawr Modernization



Fence installation Lawrence to Leland



Project Title: RPM Phase One – Design-Build Contract

Community Outreach	Major Activities	Timing
<p data-bbox="172 456 308 626">Photo coming Monday 12/15</p> <p data-bbox="122 959 334 981">Caption here and here</p>	<ul data-bbox="605 375 1090 910" style="list-style-type: none">• Weekly Red-Purple Bypass Project updates for 44th ward• Lawrence to Bryn Mawr project updates for 46th, 48th wards• Kenmore Neighbors and Buena Park Neighbors – updates on upcoming Red Line rail work• Uptown United/Uptown Chamber of Commerce Winter Walk on Wilson – social media promo• Clarendon Park Train Club Open House	<p data-bbox="1129 375 1225 408">Weekly</p> <p data-bbox="1129 481 1253 508">Bi-weekly</p> <p data-bbox="1129 582 1305 609">Multiple dates</p> <p data-bbox="1129 718 1210 745">Dec. 5</p> <p data-bbox="1129 849 1222 876">Dec. 13</p>



Project Title: Traction Power Upgrades – Canal Tie House, Barry and Damen Substations

The CTA has identified additional traction power demands based on results from the Blue Line Load Flow study and determined that three (3) areas along the blue line O'Hare branch and Dearborn subway may experience problems with running the new fleet at the service levels proposed. To continue providing a reliable and safe service, it is necessary to build two (2) new traction power substations, one at Barry and the other at Damen with all their infrastructure support along with installing a new Tie Breaker house in the Dearborn subway. Also, the project includes the replacement of all traction power equipment at the Haymarket substation.

Justification of Need:

Priority of Project:	High
Total Project Budget:	\$122.8 Million
Construction Contract Value:	\$67.5 Million
Earned to Date:	97.4% (As of November)
Percent Change Orders to Construction Contract:	16.7%
Percent Time Used:	100% (As of November)
DBE:	Goal: 25% Commitment: 25.3% Workforce Goals: 10% Career Opportunity/ 8% Apprentice/ 25% EDA Contract is on track to meet the DBE goal
Funding Source:	CTA Bonds / Rebuild Illinois
Estimated Start Date/Estimated Length of Project:	NTP: October 20, 2021, Contract Substantial Completion March 31, 2025/Estimated Substantial Completion December 1, 2025
Designer of Record:	TYLin
Construction Manager/General Contractor:	WSP / John Burns Construction



Project Title: Traction Power Upgrades – Canal Tie House, Barry and Damen Substations

Impact on Customers:	Minor service disruptions during track access occurrences.
Benefit to System:	The new Traction Power Substation will increase service reliability to the Blue Line.
Benefit to Community:	New buildings will enhance and will blend with the surrounding community and will benefit transit riders in the Blue Line with a safer and more reliable service.
Impact on Accessibility:	N/A
Customer Communication Need:	Construction Activity Notices.

Comparable Projects:

East Lake, Milwaukee & Illinois (ELMI) and Broadway substations



Project Title: Traction Power Upgrades – Canal Tie House, Barry and Damen Substations

Construction Progress

Phase	Description	Status
Haymarket Substation	<ul style="list-style-type: none">• Punchlist work	Ongoing
Canal Tie-House	<ul style="list-style-type: none">• Commission Tie-House• Interior Tie-House Build-Out• Cable connections to Tie-House• Punchlist work	Complete Complete Complete Ongoing
Damen Substation	<ul style="list-style-type: none">• Build building interior, flooring, rooms and finishes• Damen Exterior and Plaza installation	Complete Ongoing
Barry Substation	<ul style="list-style-type: none">• Installing substation Traction Power Equipment.• Build exterior walls and roof.• Build building interior, flooring, rooms and finishes• Testing and Commissioning of Traction Power Equipment	Ongoing Ongoing Ongoing Ongoing
Belmont Crossover	<ul style="list-style-type: none">• Punchlist work.	Ongoing



Project Title: Traction Power Upgrades – Canal Tie House, Barry and Damen Substations



Barry Curtain Wall Installation



Project Title: Traction Power Upgrades – Canal Tie House, Barry and Damen Substations



Barry Aux Transformer Testing



Project Title: Traction Power Upgrades – Canal Tie House, Barry and Damen Substations



Gate Detailing at Damen



Project Title: O’Hare Line – Harlem Station Bus Bridge Reconstruction

Justification of Need:

The condition of the Harlem Station bus bridge was initially identified as an infrastructure need in 2013. At that time, CTA noted significant deterioration to the concrete deck, concrete piers, and structural steel support elements due to salt corrosion and water infiltration. More recently, critical defects caused by concrete deck expansion joint failure have been identified in the south pier. The bridge needs to be replaced before it becomes a safety hazard and has to be taken out of service.

Priority of Project:	Medium
Total Project Budget:	\$40.0 M
Construction Contract Value:	\$20.4 M
Earned to Date:	\$15.0 M
Percent Change Orders to Construction Contract:	0
Percent Time Used:	122%*
DBE:	DBE goal: 25%. DBE Firms: MW Powell, Highway Safety Corp., Argo Construction LLC, Vision Painting, Alpine Demolition, W.E.B. Production & Fabricating, AC Iron LLC, S & J Construction, Livewire Electrical Systems.
Funding Sources:	Rebuild Illinois, Federal 2020, Federal 2016, Surface Transportation Program (CMAP)s
Estimated Start Date/Estimated Length of Project:	GC NTP: September 5, 2023. Substantial Completion: March 8, 2025 (NTP + 550 days)
Designer of Record:	HNTB
Construction Manager/General Contractor:	CM: TranSystems/TY Lin JV. GC: John Burns Construction Company.

*Additional time will be provided through change order.



Project Title: O'Hare Line – Harlem Station Bus Bridge Reconstruction

Impact on Customers:	Minor changes in bus service and Park & Ride access for those who use the Harlem Blue Line Station on the O'Hare Branch. Rail service will not be impacted.
Benefit to System:	New bridge superstructure and interface between bridge and station, new concrete approaches, bridge deck, ADA-compliant curbs and sidewalks, new canopy on bridge. New bus operator bathroom facility, painting, improved drainage.
Benefit to Community:	Replacement of the bridge before it becomes unsafe will help ensure continuity of service on bus routes out of the O'Hare Line Harlem Station.
Impact on Accessibility:	New ADA-compliant curbs and sidewalks for improved accessibility.
Customer Communication Need:	Construction Activity Notices, coordination with Alderman, press releases.

Comparable Projects:

Montrose Bridge Replacement (IDOT).



Project Title: O'Hare Line – Harlem Station Bus Bridge Improvements

Construction Progress

Phase	Description	Status
Construction	<ul style="list-style-type: none"><li data-bbox="211 353 476 375">• North Bridge Approach<li data-bbox="211 423 468 445">• Sout Bridge Approach<li data-bbox="211 493 568 515">• Bus Canopy Drains and Roofing<li data-bbox="211 563 568 585">• Bus Canopy Comm and Electric<li data-bbox="211 633 388 655">• Bus Bathroom<li data-bbox="211 703 468 725">• Sidewalks and Islands<li data-bbox="211 773 505 794">• Directional Bore for Water<li data-bbox="211 843 396 864">• Reopen Bridge	<p data-bbox="813 347 959 369">Early January</p> <p data-bbox="813 417 945 438">Mid January</p> <p data-bbox="813 487 925 508">December</p> <p data-bbox="813 556 1016 578">December-January</p> <p data-bbox="813 626 951 648">Late January</p> <p data-bbox="813 696 945 718">Mid January</p> <p data-bbox="813 766 953 788">Late January</p> <p data-bbox="813 836 962 858">Late February</p>



Project Title: O'Hare Line – Harlem Station Bus Bridge Reconstruction



Patching Concrete Pavement at Higgins



Project Title: O'Hare Line – Harlem Station Bus Bridge Reconstruction



Electricians Installing Canopy Conduit



Project Title: O'Hare Line – Harlem Station Bus Bridge Reconstruction



Preparing to Pull New Cable Over OB Track



Project Title: O'Hare Line – Harlem Station Bus Bridge Reconstruction



Completed Decking at New Bus Canopy



Project Title: O'Hare Line – Harlem Station Bus Bridge Reconstruction



Bending Electrical Conduit in Station



Project Title: All Stations Accessibility Program

The CTA is committed to making its system completely accessible to people with disabilities in the next 20 years by becoming the first legacy transit system to make all of its train stations accessible.

Justification of Need:

Priority of Project:	High
Total Program Budget:	\$4.9 Billion
Total Funded Value:	\$740.8 Million
Under Contract:	% (As of November 2024)
Total Number of Stations Currently Accessible	104 (71%)
Total Number of Stations Currently Programed for Upgrades	14 (81%)
Total Number of Elevators Programmed for Rehab	16 of 173
Estimated Start Date/Estimated Length of Project:	Phase 1: 2023-2027, Phase 2 (Funded): 2026-2028



Project Title: All Stations Accessibility Program

Funded Program Progress

Phase	Description	Status
Construction	Funded Station Projects	
	Lawrence (Red Line)	Completed
	Argyle (Red Line)	Completed
	Berwyn (Red Line)	Completed
	Bryn Mawr (Red Line)	Completed
	Racine (Blue Line)	On-going
	Austin (Green Line)	On-going
State/Lake (Loop)	Beginning	
Design	Funded Design Projects	
	California (Blue Line)	Complete
	Montrose (Blue Line)	On-going
	16 Elevator Rehabs	On-going
	Belmont (Blue Line)	Beginning
	Irving Park (Blue Line)	Beginning
	Pulaski (Blue Line)	Planning/Environmental
	Oak Park (Green Line)	Planning/Environmental
Ridgeland (Green Line)	Planning/Environmental	



Project Title: All Stations Accessibility Program – Lake Line Austin Station

Justification of Need: As part of our ongoing efforts to make the CTA system fully accessible to people with disabilities, improvements to the Lake Line Austin Station are essential. These upgrades will ensure the station complies with current provisions of the Americans with Disabilities Act (ADA). The project will also enhance the state of good repair of the station house building envelope and provide an alternate means of egress for the existing Austin Station.

Priority of Project:	High
Total Project Budget:	\$25.5 M
Construction Contract Value:	\$15.6 M
Earned to Date:	\$8.01 M
Percent Change Orders to Construction Contract:	2%
Percent Time Used:	93% based on projected Substantial Completion February 4, 2026
DBE:	DBE goal: 30%. DBE Firms: Highway Safety Corporation, Metropolitan Steel, Anderson Shah Roofing, Pinto Construction Group, Smith Painting Services, Wolf Electrical, Phoenix Business Solutions, Araiza Corporation, and Chicago Area Plumbing and Mechanical.
Funding Sources:	Rebuild Illinois and Federal 2021
Actual Start Date/Estimated Length of Project:	GC NTP: December 29, 2023; Projected Substantial Completion: February 2, 2026 (NTP + 768 days)
Designer of Record:	Epstein
Construction Manager/General Contractor:	CM: SQN. GC: John Burns Construction.



Project Title: All Stations Accessibility Program – Lake Line Austin Station

Impact on Customers:	There will be impact to CTA customers and surrounding community related to pedestrian and vehicular detours for utility replacements along Corcoran also CTA customers will be redirected to use temporary station entrance at Mason Ave. Platform closures and back rides will be necessary throughout construction.
Benefit to System:	System benefits include new elevator and elevator machine room, state of good repair improvements to the station house building envelope, new electrical room, new communications room, new janitor closet. new customer assistant kiosk and ADA compliant customer assistant restroom.
Benefit to Community:	Some Community benefits are the overall aesthetics of the Austin station will be improved. Increased station accessibility with the new elevator and associated ramps and sidewalk. Improved safety by reopening of the Auxiliary exit at Mason Ave. There will also be improvements to the streetscape.
Impact on Accessibility:	New ADA-compliant elevator, Auxiliary exit and sidewalks for improved accessibility.
Customer Communication Need:	Construction Activity Notices, GCR Coordination with City of Chicago Alderman, The Village of Oak Park and Website / Press releases.

Comparable Projects:

Lake Line – Oak Park and Ridgeland Stations



Project Title: All Stations Accessibility Program – Lake Line Austin Station

Construction Progress

Phase	Description	Status
Construction	• Elevator Shaft Cast In Place Footing installation	Completed
	• Elevator Shaft Cast In Place Retaining Wall Support Beam Installation	Completed
	• Communications/Electrical Room Concrete Masonry wall installation	Completed
	• Communications/Electrical Room CT Cabinet installation & ComEd Inspection Prep	Completed
	• Communications/Electrical Room & Stationhouse Roofing Installation	Ongoing
	• Austin / Corcoran Traffic Signal Improvements	In Progress
	• Platform Level lighting installation	In Progress



Project Title: All Stations Accessibility Program – Lake Line Austin Station



Elevator Shaft Foundation Re-Bar and Framing installation



**Retaining Wall Support Beam Installation
at Elevator Shaft**



Project Title: All Stations Accessibility Program – Lake Line Austin Station



Communications/Electrical Room Concrete Masonry Wall Installation



Project Title: All Stations Accessibility Program – Lake Line Austin Station



Communications/Electrical Room & Stationhouse Roofing Installation



Project Title: Racine Station ADA & Traction Power Improvement Project

Justification of Need:

The existing Racine station is not accessible, and the ADA Improvements will add an elevator, and provide an ADA compliant ramp with adequate clearances for wheelchairs and mobility devices. In addition, to accommodate growth in ridership and maintain reliable service, the CTA procured newer generations of rail car fleets, which required traction power improvements consisting of constructing a new Morgan substation as well as upgrading existing traction power equipment within the Hermitage substation to meet higher power demands on the Forest Park branch of the Blueline.

Priority of Project:	High
Total Project Budget:	\$106,217,468
Construction Contract Value:	\$75,400,000
Earned to Date:	82% (through November 2025)
Percent Change Orders to Construction Contract:	11%
Percent Time Used:	96% (through November 2025)
DBE:	Goal: 25% Commitment: 25% Workforce Goals: 10% Career Opportunity, 15% Apprentice, 25% EDA The contract is on track to meet the DBE goal
Funding Source:	IDOT - Rebuild Illinois
Estimated Start Date/Estimated Length of Project:	NTP: 5/12/2023, Project Duration: 965 days (NTP through Substantial Completion)
Designer of Record:	HNTB
Construction Manager/General Contractor:	Congress Corridor Partners, a JV between (WSP/Ardmore) / F.H. Paschen, S.N. Nielsen & Associates



Project Title: Racine Station ADA & Traction Power Improvement Project

Impact on Customers:	<ul style="list-style-type: none">• Minor service disruptions during 54hr weekend TAOs.• No rail service between IMD and UIC-Halsted stations during weekend linecuts.• The Racine station will be OOS during the weekend linecuts.• No access to Racine stationhouse from Racine street until completely rebuild, the Loomis stationhouse will remain in service during this time.• Local bus shuttles will be provided during weekend linecuts.
Benefit to System:	<ul style="list-style-type: none">• The project will make the Racine station fully accessible.• The project will add more power to boost reliability and meet service demands.• The project will reduce the Racine station and Hermitage substation maintenance needs.
Benefit to Community:	<ul style="list-style-type: none">• When completed, the project is expected to accommodate all the accessibility needs for riders traveling through the Racine station utilizing various mobility devices.
Impact on Accessibility:	<ul style="list-style-type: none">• YES
Customer Communication Need:	<ul style="list-style-type: none">• GCR outreach with surrounding stakeholders.• Construction activity notices will be distributed as needed.• Advanced service disruption signs and posters will be installed as needed.

Comparable Projects:

The Illinois Medical District (IMD) Station Improvements



Project Title: Racine Station ADA & Traction Power Improvement Project

Construction Progress

Phase	Description	Status
Construction	<p>Racine Stationhouse Entrance:</p> <ul style="list-style-type: none"> • Structure & shell • Main stairs and elevator • Bridge level interiors • Electrical and mechanical rooms • Electrical and sanitary underground services <p>Racine Platform New Concourse Extension:</p> <ul style="list-style-type: none"> • Structure & shell • MEP and communication systems <p>Racine Platform and Canopy:</p> <ul style="list-style-type: none"> • Canopy demolition and restoration • MEP and communication systems <p>Loomis Stationhouse Entrance:</p> <ul style="list-style-type: none"> • Demolition of existing stationhouse, ramp and columns • Rebuild New Structure & Shell • Bridge Level Interiors • Electrical and Mechanical Rooms • Electrical and Sanitary Underground Services <p>Loomis New ADA Ramp:</p> <ul style="list-style-type: none"> • Installation of new ADA ramp and columns • Installation of new ramp roofing system and MEP <p>Morgan Substation:</p> <ul style="list-style-type: none"> • Structure & shell • Bridge (1st) level and equipment (2nd) level interiors • Electrical and sanitary underground services • Traction power equipment delivery, installation, testing and commissioning <p>Hermitage Substation:</p> <ul style="list-style-type: none"> • Removal of existing traction power equipment • Traction power equipment delivery, installation, testing and commissioning 	<p>Complete</p> <p>Complete</p> <p>Complete</p> <p>Complete</p> <p>Complete</p> <p>Complete</p> <p>Complete</p> <p>Complete</p> <p>Ongoing</p> <p>Ongoing</p> <p>Complete</p> <p>Ongoing</p> <p>Planned</p> <p>Planned</p> <p>Ongoing</p> <p>Ongoing</p> <p>Planned</p> <p>Complete</p> <p>Ongoing</p> <p>Planned</p> <p>Ongoing</p> <p>Ongoing</p>

Delay Explanation:

N/A



Project Title: Racine Station ADA & Traction Power Improvement Project



Loomis Stationhouse Columns



Project Title: Racine Station ADA & Traction Power Improvement Project



Loomis Stationhouse Deck Installation



Project Title: Racine Station ADA & Traction Power Improvement Project



Loomis Stationhouse Beams Rebars & Forms



Project Title: Racine Station ADA & Traction Power Improvement Project



Loomis Stationhouse Beams Concrete Pour



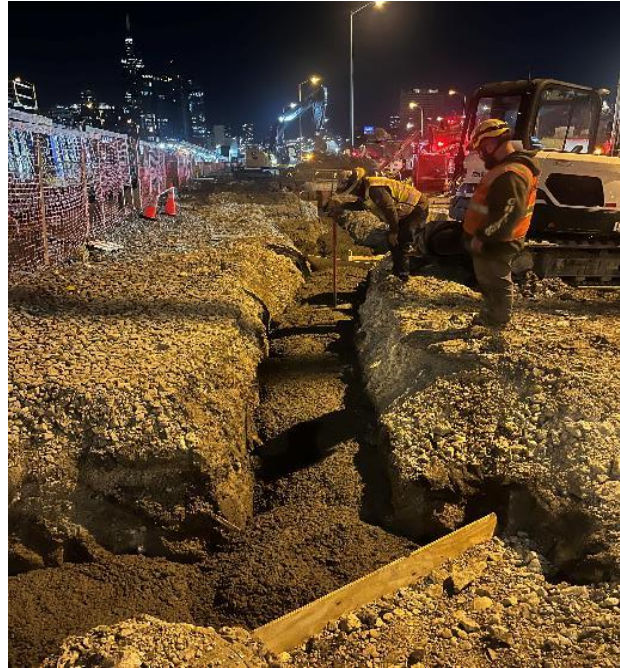
Project Title: Racine Station ADA & Traction Power Improvement Project



The Loomis End – Directional Drill Electrical Tie-in



Project Title: Racine Station ADA & Traction Power Improvement Project



The Loomis End – Electrical Ductbank Work



Project Title: Racine Station ADA & Traction Power Improvement Project



Removing ERS Whalers from Sanitary & Electrical Pits



Project Title: Western Brown Line Station Improvements

Justification of Need:

Improvements to Ravenswood Western Station are necessary to bring the station into compliance with current provisions of the Americans with Disabilities Act (ADA), adapt to redeveloped adjacent storefronts, improve security, and extend the useful life of the station through replacement of deteriorated site, building, and platform components. This project is being delivered by a progressive design build delivery method, which is advantageous for both schedule and the design to budget requirement.

Priority of Project:	Medium
Total Project Budget:	\$30.0 M
Construction Contract Value:	\$19.0 M
Earned to Date:	\$12.3 M
Percent Change Orders to Construction Contract:	0
Percent Time Used:	100%*
DBE:	DBE goal: 30%. DBE Firms: American Survey & Engineering, PC, Facet Engineering, GSG Consultants. Inc., Quigg Engineering.
Funding Sources:	Chicago Tax Increment Funding, Federal 2022, Federal 2023, CTA bonds
Estimated Start Date/Estimated Length of Project:	GC NTP1: May 11, 2023; NTP2: August 6, 2024; Substantial Completion: January 13, 2026 (NTP2 + 525 days)
Designer of Record:	CDM Smith
Construction Manager/General Contractor:	CM: AECOM. GC: FH Paschen.

*Expecting an extension in contract time (March 2026)



Project Title: Western Brown Line Station Improvements

Impact on Customers:	CTA customers may be redirected to use alternate station entrance. Platform closures and back rides will be necessary. The work will also require some temporary bus reroutes and lane closures on Western and Lincoln.
Benefit to System:	State of good repair improvements to the building envelope, platform, platform guardrails and canopy, and interior finishes. New customer assistant booth, reconstructed operator bathroom facility.
Benefit to Community:	Increased station accessibility, improved safety through renovated sidewalks, walkway pavements, lighting, cameras, and signage. Overall improved appearance as a result of painting.
Impact on Accessibility:	New ADA-compliant curbs, bus turnaround islands, replacement of elevator cabs and sidewalks for improved accessibility.
Customer Communication Need:	Construction Activity Notices, coordination with Alderman, press releases.

Comparable Projects:

Quincy Loop Station Upgrade



Project Title: Western Brown Line Station Improvements

Construction Progress

Phase	Description	Status
Construction	Stage 2 Construction	
	Demo/Install New Masonry (above 1 st floor)	Completed
	Inspect Structural Steel on North Facade	Completed
	Install Scaffolding and Weather Protection North Facade	Completed
	Reconstruct Bus Driver Washroom	On-going
	Reconstruct North Masonry Exterior Walls	On-going
	Replace North Elevator	January '26
	Replace South Elevator	October thru December
	Glazing/Storefront Replacement (ground floor)	December thru February
	Station House Ceiling Replacement	Q1 2026
Upgrade Station Electric Service	Q2 2026	
Lighting Replacement and Installation	Jan to March 2026	



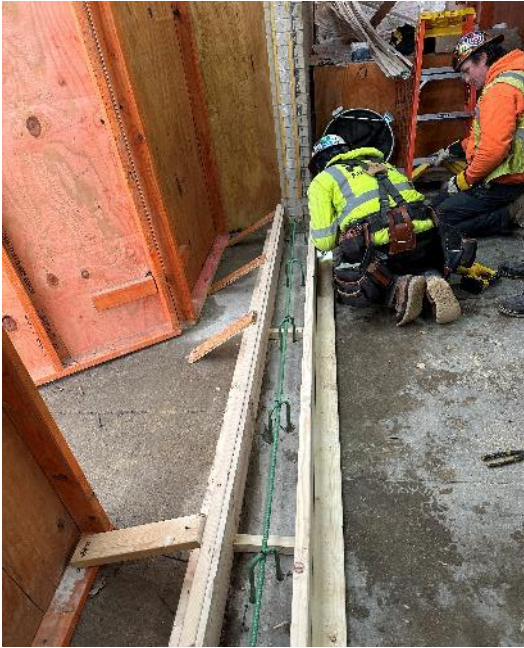
Project Title: Western Brown Line Station Improvements



North Wall - Erection of Masonry Scaffold



Project Title: Western Brown Line Station Improvements



Forming and Pouring Station Storefront Curb



Project Title: Western Brown Line Station Improvements



Locating Power for New Duct Bank



Project Title: Western Brown Line Station Improvements



Running Conduit from New Electric Room



Highlighted Events

Small Business Educational Series Reunion

Date: December 4, 2025



Diversity Programs held the first of several Small Business Education Series Reunions in honor of its upcoming 10-year anniversary. Alumni gathered to network and hear success stories from panelists that have gone on to partner with CTA and other federal agencies.



December 2025 Outreach Events

Illinois Hispanic Chamber of Commerce (IHCC) Holiday Celebration	December 3, 2025	City of Chicago 2nd Annual Veteran Business Enterprise Day	December 10, 2025
Small Business Educational Series Reunion	December 4, 2025	Hire360 Holiday Event	December 11, 2025
Hispanic American Construction Industry Association(HACIA) Holiday Event	December 4, 2025	Chicago Public Schools (CPS) Construction Summit	December 16, 2025
Chicago Minority Supplier Development Council (CMSDC) Holiday Event	December 5, 2025		