



Construction Project Briefing



July 9, 2025



Today's Presentation

Service Reliability & State of Good Repair

- Traction Power Upgrades - Canal Tie House, Barry and Damen Substations
- O'Hare Line - Harlem Station Bus Bridge Reconstruction

All Stations Accessibility Program - (ASAP)

- Lake Line Austin Station Project
- Racine Station ADA & Traction Power Improvement Project

Customer Facing Investments

- Western Brown Line Station Improvements
- Refresh & Renew Project

Mega Projects

- Red and Purple Modernization Project



Project Title: Traction Power Upgrades – Canal Tie House, Barry and Damen Substations

The CTA has identified additional traction power demands based on results from the Blue Line Load Flow study and determined that three (3) areas along the blue line O'Hare branch and Dearborn subway may experience problems with running the new fleet at the service levels proposed. To continue providing a reliable and safe service, it is necessary to build two (2) new traction power substations, one at Barry and the other at Damen with all their infrastructure support along with installing a new Tie Breaker house in the Dearborn subway. Also, the project includes the replacement of all traction power equipment at the Haymarket substation.

Justification of Need:

Priority of Project:	High
Total Project Budget:	\$122.8 Million
Construction Contract Value:	\$67.2 Million
Earned to Date:	98.0% (As of May 2025)
Percent Change Orders to Construction Contract:	16.7%
Percent Time Used:	100% (As of May 2025)
DBE:	Goal: 25% Commitment: 25.3% Workforce Goals: 10% Career Opportunity/ 8% Apprentice/ 25% EDA Contract is on track to meet the DBE goal
Funding Source:	CTA Bonds / Rebuild Illinois
Estimated Start Date/Estimated Length of Project:	NTP: October 20, 2021, Contract Substantial Completion March 31, 2025/Estimated Substantial Completion September 15, 2025
Designer of Record:	TYLin
Construction Manager/General Contractor:	WSP / John Burns Construction



Project Title: Traction Power Upgrades – Canal Tie House, Barry and Damen Substations

Impact on Customers:	Minor service disruptions during track access occurrences.
Benefit to System:	The new Traction Power Substation will increase service reliability to the Blue Line.
Benefit to Community:	New buildings will enhance and will blend with the surrounding community and will benefit transit riders in the Blue Line with a safer and more reliable service.
Impact on Accessibility:	N/A
Customer Communication Need:	Construction Activity Notices.

Comparable Projects:

East Lake, Milwaukee & Illinois (ELMI) and Broadway substations



Project Title: Traction Power Upgrades – Canal Tie House, Barry and Damen Substations

Construction Progress

Phase	Description	Status
Haymarket Substation	<ul style="list-style-type: none">• Punchlist work	Ongoing
Canal Tie-House	<ul style="list-style-type: none">• Commission Tie-House• Interior Tie-House Build-Out• Cable connections to Tie-House• Punchlist work	Complete Complete Complete Ongoing
Damen Substation	<ul style="list-style-type: none">▪ Installation of External Traction Power Cables• Equipment Testing and Commissioning• Build building interior, flooring, rooms and finishes	Complete Ongoing Ongoing
Barry Substation	<ul style="list-style-type: none">• Installing substation Traction Power Equipment.• Build exterior walls and roof.• Build building interior, flooring, rooms and finishes	Ongoing Ongoing Ongoing
Belmont Crossover	<ul style="list-style-type: none">• Punchlist work.	Ongoing



Project Title: Traction Power Upgrades – Canal Tie House, Barry and Damen Substations



Short Circuit Testing at Damen



Project Title: Traction Power Upgrades – Canal Tie House, Barry and Damen Substations



Short Circuit Testing at Damen



Project Title: Traction Power Upgrades – Canal Tie House, Barry and Damen Substations



Prep for Traffic Coating Install at Damen



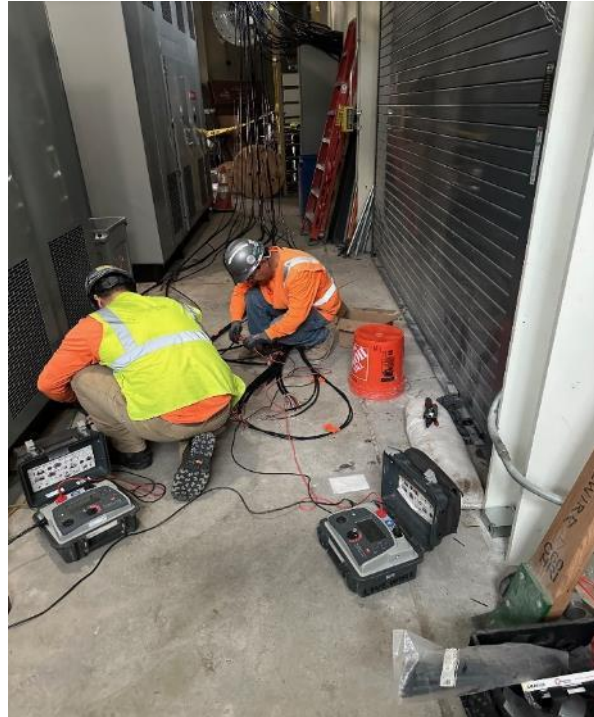
Project Title: Traction Power Upgrades – Canal Tie House, Barry and Damen Substations



Waterproofing Install at Barry Subvaul



Project Title: Traction Power Upgrades – Canal Tie House, Barry and Damen Substations



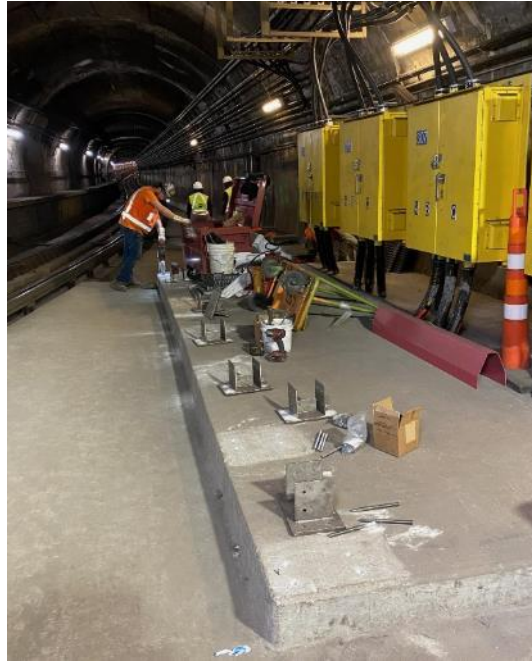
Control Cable Install and Testing at Barry



Project Title: Traction Power Upgrades – Canal Tie House, Barry and Damen Substations



Completed Drip Pan at Canal Tie-House



Protective Barrier Install at Canal



Project Title: O’Hare Line – Harlem Station Bus Bridge Reconstruction

Justification of Need: The condition of the Harlem Station bus bridge was initially identified as an infrastructure need in 2013. At that time, CTA noted significant deterioration to the concrete deck, concrete piers, and structural steel support elements due to salt corrosion and water infiltration. More recently, critical defects caused by concrete deck expansion joint failure have been identified in the south pier. The bridge needs to be replaced before it becomes a safety hazard and has to be taken out of service.

Priority of Project:	Medium
Total Project Budget:	\$40.0 M
Construction Contract Value:	\$20.4 M
Earned to Date:	\$13.1 M
Percent Change Orders to Construction Contract:	0
Percent Time Used:	99%
DBE:	DBE goal: 25%. DBE Firms: MW Powell, Highway Safety Corp., Argo Construction LLC, Vision Painting, Alpine Demolition, W.E.B. Production & Fabricating, AC Iron LLC, S & J Construction, Livewire Electrical Systems.
Funding Sources:	Rebuild Illinois, Federal 2020, Federal 2016, Surface Transportation Program (CMAP)s
Estimated Start Date/Estimated Length of Project:	GC NTP: September 5, 2023. Substantial Completion: March 8, 2025 (NTP + 550 days)
Designer of Record:	HNTB
Construction Manager/General Contractor:	CM: TranSystems/TY Lin JV. GC: John Burns Construction Company.



Project Title: O'Hare Line – Harlem Station Bus Bridge Reconstruction

Impact on Customers:	Minor changes in bus service and Park & Ride access for those who use the Harlem Blue Line Station on the O'Hare Branch. Rail service will not be impacted.
Benefit to System:	New bridge superstructure and interface between bridge and station, new concrete approaches, bridge deck, ADA-compliant curbs and sidewalks, new canopy on bridge. New bus operator bathroom facility, painting, improved drainage.
Benefit to Community:	Replacement of the bridge before it becomes unsafe will help ensure continuity of service on bus routes out of the O'Hare Line Harlem Station.
Impact on Accessibility:	New ADA-compliant curbs and sidewalks for improved accessibility.
Customer Communication Need:	Construction Activity Notices, coordination with Alderman, press releases.

Comparable Projects:

Montrose Bridge Replacement (IDOT).



Project Title: O'Hare Line – Harlem Station Bus Bridge Improvements

Construction Progress

Phase	Description	Status
Construction	<ul style="list-style-type: none"><li data-bbox="211 353 591 375">• Install Masonry for Bus Washroom<li data-bbox="211 425 571 447">• Pour Parapet Wall and Sidewalk<li data-bbox="211 497 528 519">• Install Below-bridge Lighting<li data-bbox="211 570 519 591">• Install Bus Washroom Roof<li data-bbox="211 642 602 663">• Install Bridge Canopy Steel/Roofing<li data-bbox="211 714 439 736">• Install Bus Shelters<li data-bbox="211 786 619 808">• Directional Bore for Water and Sewer<li data-bbox="211 858 568 880">• Bus Canopy Comm and Electric	Completed Completed Late June Late June Early July Mid July Late July Late July



Project Title: O'Hare Line – Harlem Station Bus Bridge Reconstruction



Backfill and Compactions Near South Abutment



Project Title: O'Hare Line – Harlem Station Bus Bridge Reconstruction



Installing Rebar and Formwork for Parapet Wall



Project Title: O'Hare Line – Harlem Station Bus Bridge Reconstruction



Plumbing Installed For Bus Washrooms



Project Title: All Stations Accessibility Program

The CTA is committed to making its system completely accessible to people with disabilities in the next 20 years by becoming the first legacy transit system to make all of its train stations accessible.

Justification of Need:

Priority of Project:	High
Total Program Budget:	\$4.9 Billion
Total Funded Value:	\$740.8 Million
Under Contract:	% (As of November 2024)
Total Number of Stations Currently Accessible	104 (71%)
Total Number of Stations Currently Programmed for Upgrades	14 (81%)
Total Number of Elevators Programmed for Rehab	16 of 173
Estimated Start Date/Estimated Length of Project:	Phase 1: 2023-2027, Phase 2 (Funded): 2026-2028



Project Title: All Stations Accessibility Program

Funded Program Progress

Phase	Description	Status
Construction	Funded Station Projects	
	Lawrence (Red Line)	On-going
	Argyle (Red Line)	On-going
	Berwyn (Red Line)	On-going
	Bryn Mawr (Red Line)	On-going
	Racine (Blue Line)	On-going
	Austin (Green Line)	On-going
State/Lake (Loop)	Beginning	
Design	Funded Design Projects	
	California (Blue Line)	Complete
	Montrose (Blue Line)	On-going
	16 Elevator Rehabs	On-going
	Belmont (Blue Line)	Beginning
	Irving Park (Blue Line)	Beginning
	Pulaski (Blue Line)	Planning/Environmental
	Oak Park (Green Line)	Planning/Environmental
Ridgeland (Green Line)	Planning/Environmental	



Project Title: All Stations Accessibility Program – Lake Line Austin Station

Justification of Need: As part of our ongoing efforts to make the CTA system fully accessible to people with disabilities, improvements to the Lake Line Austin Station are essential. These upgrades will ensure the station complies with current provisions of the Americans with Disabilities Act (ADA). The project will also enhance the state of good repair of the station house building envelope and provide an alternate means of egress for the existing Austin Station.

Priority of Project:	High
Total Project Budget:	\$25.5 M
Construction Contract Value:	\$15.6 M
Earned to Date:	\$5.28 M
Percent Change Orders to Construction Contract:	2%
Percent Time Used:	70% based on projected Substantial Completion January 8, 2026
DBE:	DBE goal: 30%. DBE Firms: Highway Safety Corporation, Metropolitan Steel, Anderson Shah Roofing, Pinto Construction Group, Smith Painting Services, Wolf Electrical, Phoenix Business Solutions, Araiza Corporation, and Chicago Area Plumbing and Mechanical.
Funding Sources:	Rebuild Illinois and Federal 2021
Actual Start Date/Estimated Length of Project:	GC NTP: December 29, 2023; Projected Substantial Completion: January 8, 2026 (NTP + 741 days)
Designer of Record:	Epstein
Construction Manager/General Contractor:	CM: SQN. GC: John Burns Construction.



Project Title: All Stations Accessibility Program – Lake Line Austin Station

Impact on Customers:	There will be impact to CTA customers and surrounding community related to pedestrian and vehicular detours for utility replacements along Corcoran also CTA customers will be redirected to use temporary station entrance at Mason Ave. Platform closures and back rides will be necessary throughout construction.
Benefit to System:	System benefits include new elevator and elevator machine room, state of good repair improvements to the station house building envelope, new electrical room, new communications room, new janitor closet, new customer assistant kiosk and ADA compliant customer assistant restroom.
Benefit to Community:	Some Community benefits are the overall aesthetics of the Austin station will be improved. Increased station accessibility with the new elevator and associated ramps and sidewalk. Improved safety by reopening of the Auxiliary exit at Mason Ave. There will also be improvements to the streetscape.
Impact on Accessibility:	New ADA-compliant elevator, Auxiliary exit and sidewalks for improved accessibility.
Customer Communication Need:	Construction Activity Notices, GCR Coordination with City of Chicago Alderman, The Village of Oak Park and Website / Press releases.

Comparable Projects:

Lake Line – Oak Park and Ridgeland Stations



Project Title: All Stations Accessibility Program – Lake Line Austin Station

Construction Progress

Phase	Description	Status
Construction	<ul style="list-style-type: none">• Mason Stationhouse aluminum window frames & glazing delivery and installation	Completed
	<ul style="list-style-type: none">• Contractor continued site utility work, installing new underground sewer and electrical utilities	Ongoing
	<ul style="list-style-type: none">• Austin Stationhouse foundation walls installation	Ongoing
	<ul style="list-style-type: none">• Mason Stationhouse roofing installation	In Progress
	<ul style="list-style-type: none">• Mason Stationhouse floor topping installation and finishing.	In Progress
	<ul style="list-style-type: none">• Mason Stationhouse wall tile installation.	In Progress
	<ul style="list-style-type: none">• Mason Stationhouse electrical installation	In Progress



Project Title: All Stations Accessibility Program – Lake Line Austin Station



Installing Foundation Walls at Austin Stationhouse Addition



Project Title: All Stations Accessibility Program – Lake Line Austin Station



**Newly Installed Aluminum Storefront at
Mason Stationhouse Stair**



Installation of Ceramic Wall Tile



Installation of Storefront at Mason Stationhouse



Installation of Roof at Mason Stationhouse



Project Title: Racine Station ADA & Traction Power Improvement Project

Justification of Need:

The existing Racine station is not accessible, and the ADA Improvements will add an elevator, and provide an ADA compliant ramp with adequate clearances for wheelchairs and mobility devices. In addition, to accommodate growth in ridership and maintain reliable service, the CTA procured newer generations of rail car fleets, which required traction power improvements consisting of constructing a new Morgan substation as well as upgrading existing traction power equipment within the Hermitage substation to meet higher power demands on the Forest Park branch of the Blueline.

Priority of Project:	High
Total Project Budget:	\$106,217,468
Construction Contract Value:	\$75,400,000
Earned to Date:	62% (thru May 2025)
Percent Change Orders to Construction Contract:	0%
Percent Time Used:	81% (thru May 2025)
DBE:	Goal: 25% Commitment: 25% Workforce Goals: 10% Career Opportunity, 15% Apprentice, 25% EDA The contract is on track to meet the DBE goal
Funding Source:	IDOT - Rebuild Illinois
Estimated Start Date/Estimated Length of Project:	NTP: 5/12/2023, Project Duration: 925 days (NTP through Substantial Completion)
Designer of Record:	HNTB
Construction Manager/General Contractor:	Congress Corridor Partners, a JV between (WSP/Ardmore) / F.H. Paschen, S.N. Nielsen & Associates



Project Title: Racine Station ADA & Traction Power Improvement Project

Impact on Customers:	<ul style="list-style-type: none">• Minor service disruptions during 54hr weekend TAOs.• No rail service between IMD and UIC-Halsted stations during weekend linecuts.• The Racine station will be OOS during the weekend linecuts.• No access to Racine stationhouse from Racine street until completely rebuild, the Loomis stationhouse will remain in service during this time.• Local bus shuttles will be provided during weekend linecuts.
Benefit to System:	<ul style="list-style-type: none">• The project will make the Racine station fully accessible.• The project will add more power to boost reliability and meet service demands.• The project will reduce the Racine station and Hermitage substation maintenance needs.
Benefit to Community:	<ul style="list-style-type: none">• When completed, the project is expected to accommodate all the accessibility needs for riders traveling through the Racine station utilizing various mobility devices.
Impact on Accessibility:	<ul style="list-style-type: none">• YES
Customer Communication Need:	<ul style="list-style-type: none">• GCR outreach with surrounding stakeholders.• Construction activity notices will be distributed as needed.• Advanced service disruption signs and posters will be installed as needed.

Comparable Projects:

The Illinois Medical District (IMD) Station Improvements



Project Title: Racine Station ADA & Traction Power Improvement Project



Racine Stationhouse Stairway Roofing Progress



Project Title: Racine Station ADA & Traction Power Improvement Project



Racine Stationhouse Interior Doors



Project Title: Racine Station ADA & Traction Power Improvement Project



Racine Platform Canopy Paint



Project Title: Racine Station ADA & Traction Power Improvement Project



Racine Electrical Receiving Pit Progress



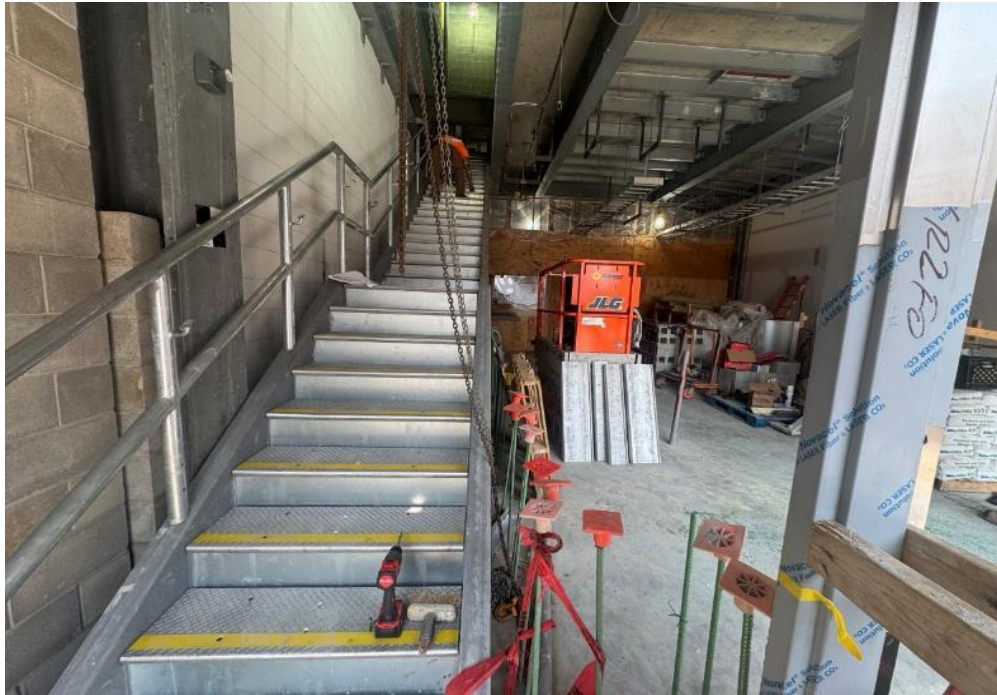
Project Title: Racine Station ADA & Traction Power Improvement Project



Racine Electrical Conduits



Project Title: Racine Station ADA & Traction Power Improvement Project



Morgan Substation Exit Stair



Project Title: Racine Station ADA & Traction Power Improvement Project



Morgan Substation Equipment Lighting Installation



Project Title: Racine Station ADA & Traction Power Improvement Project



Morgan Substation Exterior



Project Title: Western Brown Line Station Improvements

Justification of Need:

Improvements to Ravenswood Western Station are necessary to bring the station into compliance with current provisions of the Americans with Disabilities Act (ADA), adapt to redeveloped adjacent storefronts, improve security, and extend the useful life of the station through replacement of deteriorated site, building, and platform components. This project is being delivered by a progressive design build delivery method, which is advantageous for both schedule and the design to budget requirement.

Priority of Project:	Medium
Total Project Budget:	\$30.0 M
Construction Contract Value:	\$19.0 M
Earned to Date:	\$10.4 M
Percent Change Orders to Construction Contract:	0
Percent Time Used:	64%
DBE:	DBE goal: 30%. DBE Firms: American Survey & Engineering, PC, Facet Engineering, GSG Consultants. Inc., Quigg Engineering.
Funding Sources:	Chicago Tax Increment Funding, Federal 2022, Federal 2023, CTA bonds
Estimated Start Date/Estimated Length of Project:	GC NTP1: May 11, 2023; NTP2: August 6,2024; Substantial Completion: January 13, 2026 (NTP2 + 525 days)
Designer of Record:	CDM Smith
Construction Manager/General Contractor:	CM: AECOM. GC: FH Paschen.



Project Title: Western Brown Line Station Improvements

Impact on Customers:	CTA customers may be redirected to use alternate station entrance. Platform closures and back rides will be necessary. The work will also require some temporary bus reroutes and lane closures on Western and Lincoln.
Benefit to System:	State of good repair improvements to the building envelope, platform, platform guardrails and canopy, and interior finishes. New customer assistant booth, reconstructed operator bathroom facility.
Benefit to Community:	Increased station accessibility, improved safety through renovated sidewalks, walkway pavements, lighting, cameras, and signage. Overall improved appearance as a result of painting.
Impact on Accessibility:	New ADA-compliant curbs, bus turnaround islands, replacement of elevator cabs and sidewalks for improved accessibility.
Customer Communication Need:	Construction Activity Notices, coordination with Alderman, press releases.

Comparable Projects:

Quincy Loop Station Upgrade



Project Title: Western Brown Line Station Improvements

Construction Progress

Phase	Description	Status
Construction	Stage 1 - Advance Package	
	Paint Track Structure	Completed
	Station House Roofing	Completed
	Platform Nosing Repairs	Completed
	Stage 2 Construction	
	Station Ceiling Demolition	Completed
	Begin Tuckpointing 1 st Floor Masonry	On-Going
	Building Permits Received	Mid June
	Demo/Install New Masonry (above 1 st floor)	Early July
	Reconstruct Bus Driver Washroom	Late Q3
	Resurface Station Floor	Late Q3
	Replace Elevator Cabs	Late Q3
	Demo Bus Canopy and Pavement	Early Q4
Electrical Upgrade	Mid Q4	
Design	Stage 1 Design – 100%	Complete
	Stage 2 Design – 90%	Complete
	Stage 2 Design – 100%	Complete



Project Title: Western Brown Line Station Improvements



New Column Steel Installed



Project Title: Western Brown Line Station Improvements



Station South Exterior - Tuckpointing Masonry



Project Title: Western Brown Line Station Improvements



Completed Temporary Roof at Bus Canopy



Project Title: Refreshed & Renewed

Justification of Need:

The Refreshed & Renewed Program is a CTA Facilities Maintenance implemented plan to promote safety, security and longevity to all CTA Facilities including, but not limited to: Rail Stations and Platforms, Bus Garages and Rail Shops across the system. The Refreshed & Renewed Program performs major improvement work at these transit operations facilities for both the customer and the internal needs of the Authority.

Priority of Project:	Medium
Total Project Budget:	\$6,500,000
Expended to Date:	\$910,663
Used last Month:	\$182,548
Funding Source:	Various
Estimated Start Date/Estimated Length of Project:	January 2021 to December 31, 2025
Contractor	CTA Forces

28 Rail Stations and 14 Bus-turn-arounds will receive lighting upgrades, painting and deep cleaning as part of this program for the current year.

28 Stations and 14 Bus-turn-arounds will have a detailed Scope of work which includes:

- Maintaining Cleanliness throughout public, as well as back-of-house areas
- Ensuring stations are graffiti free;
- Re-painting painted surfaces;
- Maintaining pathways of ingress and egress are clear of obstruction;
- LED lighting conversions and component;
- Removing obstructions from windows and store front systems that may impede natural light and safe viewing points.
- Address and repair any unsafe defects such as spalling concrete and rotted wooden platforms;
- Replacing outdated and damaged signage;
- Maintaining a warm/cool working environment.



Project Title: Refresh & Renew

Department	Description	Status
Facility Maintenance	<p><u>Rail Stations Full Program Scope 28 Stations (13 of 28 Completed)</u></p> <ul style="list-style-type: none">• Rockwell-Brown• Damen-Pink• Polk-Pink• Garfield-Red• 69th-Red• Damen-Brown• Belmont-Red• Halsted-Green• Noyes-Purple <p><u>Bus Turnaround Full Program (5 of 14 Completed)</u></p> <ul style="list-style-type: none">• Chicago/Austin• 67th/Oglesby• Congress/Financial Pl• Pulaski/104th• Kedzie/36th• Division/Austin	<p>Completed</p> <p>Completed</p> <p>Completed</p> <p>Completed</p> <p>Completed</p> <p>On-going</p> <p>Scheduled</p> <p>Scheduled</p> <p>Scheduled</p> <p>Completed</p> <p>Completed</p> <p>On-going</p> <p>On-going</p> <p>Scheduled</p> <p>Scheduled</p>

Delay Explanation:

N/A



Project Title: Refresh & Renew

Before



After



Damen/Pink – Lighting Upgrades & Installations



Project Title: Refresh & Renew

Before



After



Damen/Pink – Lighting Upgrades



Project Title: Refresh & Renew

Before



After



Damen/Pink – Lighting Upgrades



Project Title: Refresh & Renew

Before



After



Damen/Pink – Lighting Upgrades



Project Title: Refresh & Renew

Before

After



Garfield/Red – Canopy Repair/Replacement



Project Title: Refresh & Renew

Before

After



Garfield/Red – Lighting Upgrades



Project Title: Refresh & Renew

Before



After



69th/Red – Painting



Project Title: RPM Phase One – Design-Build Contract

Justification of Need:	The RPM Phase One Project is greatly needed in order to expand capacity on CTA's most utilized rail line and to replace aging infrastructure.	
Priority of Project:	High	
Total Project Budget:	\$ 2.1 Billion (excludes Transit TIF interest payments)	
Construction Contract Value:	Original - \$1,272,275,929 Current - \$1,421,783,997 (through Change Order 9)	
Earned to Date:	88.8%	
Percent Change Orders to Construction Contract:	11.8%	
Percent Time Used:	79.9%	
DBE:	Design: Goal: 20% / Commitment: 20.64% Construction Goal: 20% / Commitment: 20% Workforce Goals: 10% WIOA / 15% Apprentice / 35% EDA	Contractor is on track to meet the DBE goal
Funding Source:	CTA Financing, FTA Core Capacity Grant, CMAQ, TIFs	
NTP / Construction Start / Estimated Completion:	February 8, 2019 / October 2019 / 2026	
Design-Build Contractor:	Walsh-Fluor Design-Build Team	
Owners Representative:	Elevated Solutions Partners	
Detailed Overview of Scope:	RPM Phase One consists of the following elements that will allow CTA to expand service along the Red and Purple lines:	
	<ul style="list-style-type: none"> • Lawrence to Bryn Mawr Modernization (LBMM) – complete reconstruction and addition of ADA accessibility at four Red Line stations (Lawrence, Argyle, Berwyn, and Bryn Mawr) and reconstruction of 6 miles of track, structures, and viaducts from Leland Ave. to Ardmore Ave. • Red-Purple Bypass (RPB) - Construction of a grade-separated bypass for the Brown Line at Clark Junction, just north of Belmont Ave. Includes realignment and reconstruction of 1.4 miles of mainline tracks and structure between Belmont station and south of Cornelia Ave. • Corridor Signal Improvements (CSI) – Installation of new higher-capacity signal system on 23 miles of track between Belmont and Howard stations. 	



Project Title: RPM Phase One – Design-Build Contract

Justification of Need:	The RPM Phase One Project is greatly needed in order to expand capacity on CTA's most utilized rail line and to replace aging infrastructure.	
Priority of Project:	High	
Total Project Budget:	\$ 2.1 Billion (excludes Transit TIF interest payments)	
Construction Contract Value:	Original - \$1,272,275,929 Current - \$1,421,783,997 (through Change Order 9)	
Earned to Date:	88.4%	
Percent Change Orders to Construction Contract:	11.8%	
Percent Time Used:	80.9%	
DBE:	Design: Goal: 20% / Commitment: 20.64% Construction Goal: 20% / Commitment: 20% Workforce Goals: 10% WIOA / 15% Apprentice / 35% EDA	Contractor is on track to meet the DBE goal
Funding Source:	CTA Financing, FTA Core Capacity Grant, CMAQ, TIFs	
NTP / Construction Start / Estimated Completion:	February 8, 2019 / October 2019 / 2026	
Design-Build Contractor:	Walsh-Fluor Design-Build Team	
Owners Representative:	Elevated Solutions Partners	
Detailed Overview of Scope:	RPM Phase One consists of the following elements that will allow CTA to expand service along the Red and Purple lines:	
	<ul style="list-style-type: none"> • Lawrence to Bryn Mawr Modernization (LBMM) – complete reconstruction and addition of ADA accessibility at four Red Line stations (Lawrence, Argyle, Berwyn, and Bryn Mawr) and reconstruction of 6 miles of track, structures, and viaducts from Leland Ave. to Ardmore Ave. • Red-Purple Bypass (RPB) - Construction of a grade-separated bypass for the Brown Line at Clark Junction, just north of Belmont Ave. Includes realignment and reconstruction of 1.4 miles of mainline tracks and structure between Belmont station and south of Cornelia Ave. • Corridor Signal Improvements (CSI) – Installation of new higher-capacity signal system on 23 miles of track between Belmont and Howard stations. 	



Project Title: RPM Phase One – Design-Build Contract

Red-Purple Bypass



**NE Corner of Clark
and Roscoe
Plaza
Pavement Work**



Project Title: RPM Phase One – Design-Build Contract

Lawrence to Bryn Mawr Modernization



Lawrence Fare Array Installation



Project Title: RPM Phase One – Design-Build Contract

Lawrence to Bryn Mawr Modernization



**Berwyn
Floor Tile Cleaning
For Station
Readiness**



Project Title: RPM Phase One – Design-Build Contract

Lawrence to Bryn Mawr Modernization

Berwyn Station Entrance Concrete Pour





Project Title: RPM Phase One – Design-Build Contract

Lawrence to Bryn Mawr Modernization



**Argyle
Entrance
Painting**



Project Title: RPM Phase One – Design-Build Contract

Lawrence to Bryn Mawr Modernization



**Bryn Mawr
Platform
Readiness**



New RPM Red Line stations open July 20, 2025!



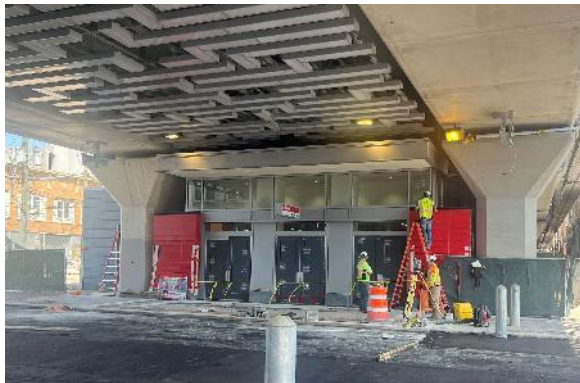
Lawrence, 2019



Lawrence and Argyle, today



Argyle, 2019





New RPM Red Line stations open July 20, 2025!



Berwyn, 2019



Berwyn and Bryn Mawr, today




Bryn Mawr, 2019





Project Title: RPM Phase One – Design-Build Contract

Community Outreach	Major Activities	Timing
 <p data-bbox="97 822 562 867"><i>CTA's RPM outreach team participated in the annual Midsommarfest in Andersonville on June 14.</i></p>	<ul data-bbox="654 380 1105 888" style="list-style-type: none">• Weekly Red-Purple Bypass Project updates for 44th ward• Lawrence to Bryn Mawr project updates for 46th, 48th wards• Illinois Asian-American Civil Engineers (IAACE) & American Society of Civil Engineers Construction Institute (ASCE-CI) Lawrence to Bryn Mawr Modernization (LBMM) project tour• Transport Chicago RPM project tour• Monthly virtual office hours (June)	<p data-bbox="1165 380 1253 408">Weekly</p> <p data-bbox="1165 478 1279 506">Bi-weekly</p> <p data-bbox="1165 576 1253 604">May 22</p> <p data-bbox="1165 801 1253 829">May 29</p> <p data-bbox="1165 867 1256 895">June 11</p>



RPM Phase One Design-Build Workforce Attainment Through May 31, 2025

122

unique DBE firms

55

new to CTA



DBEs have been awarded

\$298,631,395



Have been paid

\$245,782,366

The prime contractor is on-track to meeting their 20% DBE goal

20%

DBE Awards

21.00%

DBE Payments

20.81%



RPM Phase One Design-Build DBE Attainment Through May 31, 2025



2,868

RPM Phase I has created **2,868** construction trade labor jobs on the design-build team



Labor Hours Worked

2,522,886.52



Wages Earned

\$151,456,262.31

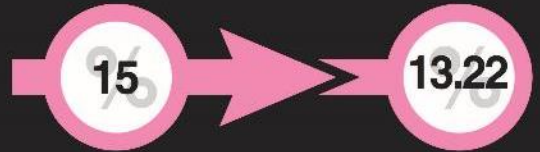
RPM Phase I Workforce Goals

Goals

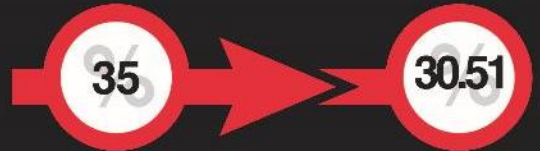
Attainment



Workforce Innovation & Opportunity Act (WIOA)



Apprenticeship



Economically Disadvantaged Area (EDA)



Highlighted Events

Building Small Business (BSB) Orientation

Date: 6/12/2025

JLM Abundant Life Center



50

Attendees

Attendees who were present learned how to access capital, gain back-office support, and get assistance with procurement opportunities.





Highlighted Events

Meet the Contractor National Automotive Parts Association (NAPA) Event

Date: 6/18/2025



8

Vendors

35

Spectators

Attendees and vendors gained valuable insight into how to become part of CTA's supply network, with vendors showcasing their products and spectators learning the steps to pursue future contracting opportunities.





Highlighted Events

Chicago Housing Authority's (CHA) –
3rd Annual Construction Trades &
Apprenticeship Hands-on Expo

Date: 6/26/2025



15

Vendors

170

Attendees

Attendees were able to learn about upcoming construction related employment, training, and small business opportunities with CTA contractors on ongoing and upcoming projects.





June 2025 Outreach Events

Federation of Women Contractors (FWC) Annual Awards: Reception Women Rock	June 4, 2025	Chicago UNIDOS in Construction 1 Year Anniversary	June 25, 2025
U.S Minority Contract Association (USMCA): AET Division Meeting: Red Line Extension Project (Virtual)	June 6, 2025	2025 Driving Small Businesses the Distance: Insurance and Bonding	June 25, 2025
Building Small Business (BSB) Orientation: JLM Abundant Life Center	June 12, 2025	Illinois State Black Chamber of Commerce Networking Event	June 26, 2025
Meet the Contractor National Automotive Parts Association (NAPA) Event	June 18, 2025	Chicago Housing Authority 3rd Annual Construction Trades & Apprenticeship Hands-On Expo	June 26, 2025
Bally's Chicago 2nd Annual Vendor Fair	June 25, 2025	U.S Minority Contract Association USMCA: Southland Chapter Meeting (Virtual)	June 27, 2025