



Construction Project Briefing



May 14, 2025



Today's Presentation

Service Reliability & State of Good Repair

- Traction Power Upgrades - Canal Tie House, Barry and Damen Substations
- O'Hare Line – Harlem Station Bus Bridge Reconstruction

All Stations Accessibility Program – (ASAP)

- Lake Line Austin Station Project
- Racine Station ADA & Traction Power Improvement Project

Customer Facing Investments

- Refresh & Renew Project

Mega Projects

- Red and Purple Modernization Project



Project Title: Traction Power Upgrades – Canal Tie House, Barry and Damen Substations

Justification of Need:

The CTA has identified additional traction power demands based on results from the Blue Line Load Flow study and determined that three (3) areas along the blue line O'Hare branch and Dearborn subway may experience problems with running the new fleet at the service levels proposed. To continue providing a reliable and safe service, it is necessary to build two (2) new traction power substations, one at Barry and the other at Damen with all their infrastructure support along with installing a new Tie Breaker house in the Dearborn subway. Also, the project includes the replacement of all traction power equipment at the Haymarket substation.

Priority of Project:	High
Total Project Budget:	\$122.8 Million
Construction Contract Value:	\$67.2 Million
Earned to Date:	96.0% (As of March 2025)
Percent Change Orders to Construction Contract:	16.7%
Percent Time Used:	100% (As of March 2025)
DBE:	Goal: 25% Commitment: 25.3% Workforce Goals: 10% Career Opportunity/ 8% Apprentice/ 25% EDA Contract is on track to meet the DBE goal
Funding Source:	CTA Bonds / Rebuild Illinois
Estimated Start Date/Estimated Length of Project:	NTP: October 20, 2021, Contract Substantial Completion March 31, 2025/Estimated Substantial Completion September 15, 2025
Designer of Record:	TYLin
Construction Manager/General Contractor:	WSP / John Burns Construction



Project Title: Traction Power Upgrades – Canal Tie House, Barry and Damen Substations

Impact on Customers:	Minor service disruptions during track access occurrences.
Benefit to System:	The new Traction Power Substation will increase service reliability to the Blue Line.
Benefit to Community:	New buildings will enhance and will blend with the surrounding community and will benefit transit riders in the Blue Line with a safer and more reliable service.
Impact on Accessibility:	N/A
Customer Communication Need:	Construction Activity Notices.

Comparable Projects:

East Lake, Milwaukee & Illinois (ELMI) and Broadway substations



Project Title: Traction Power Upgrades – Canal Tie House, Barry and Damen Substations

Construction Progress

Phase	Description	Status
Haymarket Substation	<ul style="list-style-type: none">• Punchlist work	Ongoing
Canal Tie-House	<ul style="list-style-type: none">• Commission Tie-House• Interior Tie-House Build-Out• Cable connections to Tie-House• Punchlist work	Complete Complete Complete Ongoing
Damen Substation	<ul style="list-style-type: none">▪ Installation of External Traction Power Cables• Equipment Testing and Commissioning• Build building interior, flooring, rooms and finishes	Ongoing Ongoing Ongoing
Barry Substation	<ul style="list-style-type: none">• Installing substation Traction Power Equipment.• Build exterior walls and roof.• Build building interior, flooring, rooms and finishes	Ongoing Ongoing Ongoing
Belmont Crossover	<ul style="list-style-type: none">• Punchlist work.	Ongoing



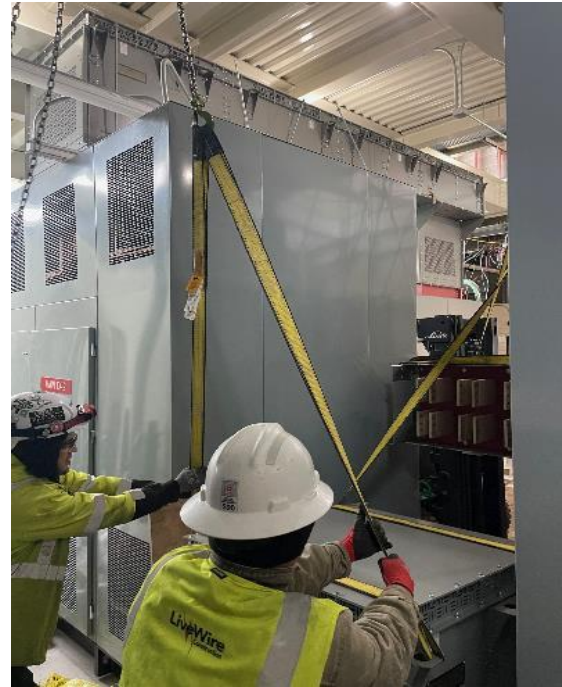
Project Title: Traction Power Upgrades – Canal Tie House, Barry and Damen Substations



Traction Power Equipment Installation at Barry



Project Title: Traction Power Upgrades – Canal Tie House, Barry and Damen Substations



Traction Power Equipment Installation at Barry



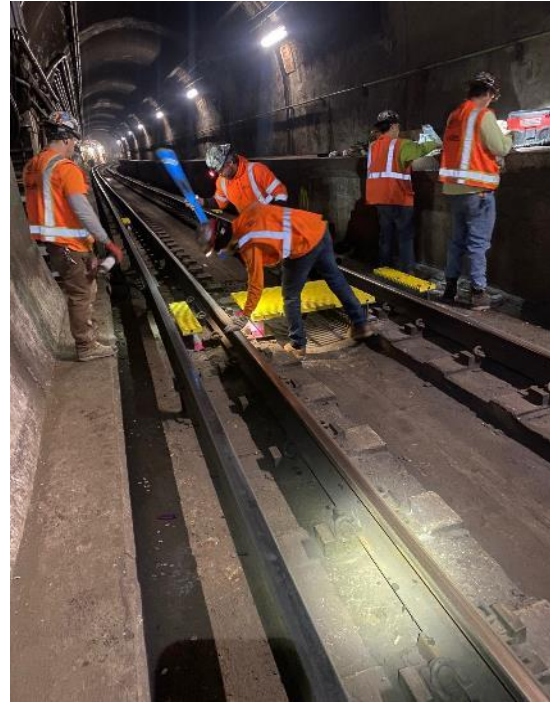
Project Title: Traction Power Upgrades – Canal Tie House, Barry and Damen Substations



Traction Power Equipment Installation at Barry



Project Title: Traction Power Upgrades – Canal Tie House, Barry and Damen Substations



Permanent Foot walk Install at Canal Tie-House



Project Title: O’Hare Line – Harlem Station Bus Bridge Reconstruction

Justification of Need: The condition of the Harlem Station bus bridge was initially identified as an infrastructure need in 2013. At that time, CTA noted significant deterioration to the concrete deck, concrete piers, and structural steel support elements due to salt corrosion and water infiltration. More recently, critical defects caused by concrete deck expansion joint failure have been identified in the south pier. The bridge needs to be replaced before it becomes a safety hazard and has to be taken out of service.

Priority of Project:	Medium
Total Project Budget:	\$40.0 M
Construction Contract Value:	\$20.4 M
Earned to Date:	\$12.5M
Percent Change Orders to Construction Contract:	0
Percent Time Used:	91%
DBE:	DBE goal: 25%. DBE Firms: MW Powell, Highway Safety Corp., Argo Construction LLC, Vision Painting, Alpine Demolition, W.E.B. Production & Fabricating, AC Iron LLC, S & J Construction, Livewire Electrical Systems.
Funding Sources:	Rebuild Illinois, Federal 2020, Federal 2016, Surface Transportation Program (CMAP)s
Estimated Start Date/Estimated Length of Project:	GC NTP: September 5, 2023. Substantial Completion: March 8, 2025 (NTP + 550 days)
Designer of Record:	HNTB
Construction Manager/General Contractor:	CM: TranSystems/TY Lin JV. GC: John Burns Construction Company.



Project Title: O'Hare Line – Harlem Station Bus Bridge Reconstruction

Impact on Customers:	Minor changes in bus service and Park & Ride access for those who use the Harlem Blue Line Station on the O'Hare Branch. Rail service will not be impacted.
Benefit to System:	New bridge superstructure and interface between bridge and station, new concrete approaches, bridge deck, ADA-compliant curbs and sidewalks, new canopy on bridge. New bus operator bathroom facility, painting, improved drainage.
Benefit to Community:	Replacement of the bridge before it becomes unsafe will help ensure continuity of service on bus routes out of the O'Hare Line Harlem Station.
Impact on Accessibility:	New ADA-compliant curbs and sidewalks for improved accessibility.
Customer Communication Need:	Construction Activity Notices, coordination with Alderman, press releases.

Comparable Projects:

Montrose Bridge Replacement (IDOT).



Project Title: O'Hare Line – Harlem Station Bus Bridge Improvements

Construction Progress

Phase	Description	Status
Construction	<ul style="list-style-type: none"><li data-bbox="211 353 594 372">• Install Bus Washroom Foundations<li data-bbox="211 423 619 442">• Set Deck Formwork and Install Rebar<li data-bbox="211 493 472 512">• Pour New Bridge Deck<li data-bbox="211 563 568 582">• Pour Parapet Wall and Sidewalk<li data-bbox="211 633 525 651">• Install Below-bridge Lighting<li data-bbox="211 703 601 721">• Install Bridge Canopy Steel/Roofing<li data-bbox="211 773 591 791">• Install Masonry for Bus Washroom<li data-bbox="211 843 491 861">• Pour Bridge Approaches<li data-bbox="211 912 619 931">• Directional Bore for Water and Sewer	Completed Completed Completed Early May Late May June '25 Late May'25 June '25 Planned Q2 '25



Project Title: O'Hare Line – Harlem Station Bus Bridge Reconstruction



Aerial View of Bridge Deck Pour



Project Title: O'Hare Line – Harlem Station Bus Bridge Reconstruction



Aerial View of Bridge Deck Pour



Project Title: O'Hare Line – Harlem Station Bus Bridge Reconstruction



Close View of Bridge Deck Pour



Project Title: O'Hare Line – Harlem Station Bus Bridge Reconstruction



Completed Bridge Deck Pour



Project Title: O'Hare Line – Harlem Station Bus Bridge Reconstruction



Installing Duct Bank, Electrical Manhole to Bridge Deck



Project Title: All Stations Accessibility Program

The CTA is committed to making its system completely accessible to people with disabilities in the next 20 years by becoming the first legacy transit system to make all of its train stations accessible.

Justification of Need:

Priority of Project:	High
Total Program Budget:	\$4.9 Billion
Total Funded Value:	\$740.8 Million
Under Contract:	% (As of November 2024)
Total Number of Stations Currently Accessible	104 (71%)
Total Number of Stations Currently Programed for Upgrades	14 (81%)
Total Number of Elevators Programmed for Rehab	16 of 173
Estimated Start Date/Estimated Length of Project:	Phase 1: 2023-2027, Phase 2 (Funded): 2026-2028



Project Title: All Stations Accessibility Program

Funded Program Progress

Phase	Description	Status
Construction	Funded Station Projects	
	Lawrence (Red Line)	On-going
	Argyle (Red Line)	On-going
	Berwyn (Red Line)	On-going
	Bryn Mawr (Red Line)	On-going
	Racine (Blue Line)	On-going
	Austin (Green Line)	On-going
State/Lake (Loop)	Beginning	
Design	Funded Design Projects	
	California (Blue Line)	Complete
	Montrose (Blue Line)	On-going
	16 Elevator Rehabs	On-going
	Belmont (Blue Line)	Beginning
	Irving Park (Blue Line)	Beginning
	Pulaski (Blue Line)	Planning/Environmental
	Oak Park (Green Line)	Planning/Environmental
Ridgeland (Green Line)	Planning/Environmental	



Project Title: All Stations Accessibility Program – Lake Line Austin Station

Justification of Need:

As part of our ongoing efforts to make the CTA system fully accessible to people with disabilities, improvements to the Lake Line Austin Station are essential. These upgrades will ensure the station complies with current provisions of the Americans with Disabilities Act (ADA). The project will also enhance the state of good repair of the station house building envelope and provide an alternate means of egress for the existing Austin Station.

Priority of Project:	High
Total Project Budget:	\$25.5 M
Construction Contract Value:	\$15.3 M
Earned to Date:	\$4.66 M
Percent Change Orders to Construction Contract:	0
Percent Time Used:	68% based on projected Substantial Completion January 8, 2026
DBE:	DBE goal: 30%. DBE Firms: Highway Safety Corporation, Metropolitan Steel, Anderson Shah Roofing, Pinto Construction Group, Smith Painting Services, Wolf Electrical, Phoenix Business Solutions, Araza Corporation, and Chicago Area Plumbing and Mechanical.
Funding Sources:	Rebuild Illinois and Federal 2021
Actual Start Date/Estimated Length of Project:	GC NTP: December 29, 2023; Projected Substantial Completion: January 8, 2026 (NTP + 741 days)
Designer of Record:	Epstein
Construction Manager/General Contractor:	CM: SQN. GC: John Burns Construction.



Project Title: All Stations Accessibility Program – Lake Line Austin Station

Impact on Customers:	There will be impact to CTA customers and surrounding community related to pedestrian and vehicular detours for utility replacements along Corcoran also CTA customers will be redirected to use temporary station entrance at Mason Ave. Platform closures and back rides will be necessary throughout construction.
Benefit to System:	System benefits include new elevator and elevator machine room, state of good repair improvements to the station house building envelope, new electrical room, new communications room, new janitor closet, new customer assistant kiosk and ADA compliant customer assistant restroom.
Benefit to Community:	Some Community benefits are the overall aesthetics of the Austin station will be improved. Increased station accessibility with the new elevator and associated ramps and sidewalk. Improved safety by reopening of the Auxiliary exit at Mason Ave. There will also be improvements to the streetscape.
Impact on Accessibility:	New ADA-compliant elevator, Auxiliary exit and sidewalks for improved accessibility.
Customer Communication Need:	Construction Activity Notices, GCR Coordination with City of Chicago Alderman, The Village of Oak Park and Website / Press releases.

Comparable Projects:

Lake Line – Oak Park and Ridgeland Stations



Project Title: All Stations Accessibility Program – Lake Line Austin Station

Construction Progress

Phase	Description	Status
Construction	<ul style="list-style-type: none"><li data-bbox="211 354 978 414">• City of Chicago DOB Construction Permit Issued 3/28/2025. Groundbreaking Ceremony held 3/31/2025<li data-bbox="211 469 842 496">• Contractor excavated and poured footings for street light poles.<li data-bbox="211 551 999 578">• Contractor installed light gauge metal framing at Mason platform stair enclosure.<li data-bbox="211 633 963 693">• Contractor continued site utility work, installing new underground sewer and electrical utilities.<li data-bbox="211 748 992 808">• Contractor set formwork/reinforcing and poured Mason roof slab expansion and beginning the installation of roofing components<li data-bbox="211 862 992 922">• Contractor in progress of excavating to pour footings and foundations for Austin Station expansion.	Completed Completed Completed Ongoing Ongoing Ongoing



Project Title: All Stations Accessibility Program – Lake Line Austin Station



**Installing Light Gauge Metal Framing at
Mason Stairs**



Project Title: All Stations Accessibility Program – Lake Line Austin Station



Pouring Roof Slab Extension at Mason Station



Installation of Street Light Pole Footings and Conduit



Project Title: Racine Station ADA & Traction Power Improvement Project

Justification of Need:

The existing Racine station is not accessible, and the ADA Improvements will add an elevator, and provide an ADA compliant ramp with adequate clearances for wheelchairs and mobility devices. In addition, to accommodate growth in ridership and maintain reliable service, the CTA procured newer generations of rail car fleets, which required traction power improvements consisting of constructing a new Morgan substation as well as upgrading existing traction power equipment within the Hermitage substation to meet higher power demands on the Forest Park branch of the Blueline.

Priority of Project:	High
Total Project Budget:	\$106,217,468
Construction Contract Value:	\$75,400,000
Earned to Date:	55% (thru March 2025)
Percent Change Orders to Construction Contract:	0%
Percent Time Used:	74% (thru March 2025)
DBE:	Goal: 25% Commitment: 25% Workforce Goals: 10% Career Opportunity, 15% Apprentice, 25% EDA The contract is on track to meet the DBE goal
Funding Source:	IDOT - Rebuild Illinois
Estimated Start Date/Estimated Length of Project:	NTP: 5/12/2023, Project Duration: 925 days (NTP through Substantial Completion)
Designer of Record:	HNTB
Construction Manager/General Contractor:	Congress Corridor Partners, a JV between (WSP/Ardmore) / F.H. Paschen, S.N. Nielsen & Associates



Project Title: Racine Station ADA & Traction Power Improvement Project

Impact on Customers:	<ul style="list-style-type: none">• Minor service disruptions during 54hr weekend TAOs.• No rail service between IMD and UIC-Halsted stations during weekend linecuts.• The Racine station will be OOS during the weekend linecuts.• No access to Racine stationhouse from Racine street until completely rebuild, the Loomis stationhouse will remain in service during this time.• Local bus shuttles will be provided during weekend linecuts.
Benefit to System:	<ul style="list-style-type: none">• The project will make the Racine station fully accessible.• The project will add more power to boost reliability and meet service demands.• The project will reduce the Racine station and Hermitage substation maintenance needs.
Benefit to Community:	<ul style="list-style-type: none">• When completed, the project is expected to accommodate all the accessibility needs for riders traveling through the Racine station utilizing various mobility devices.
Impact on Accessibility:	<ul style="list-style-type: none">• YES
Customer Communication Need:	<ul style="list-style-type: none">• GCR outreach with surrounding stakeholders.• Construction activity notices will be distributed as needed.• Advanced service disruption signs and posters will be installed as needed.

Comparable Projects:

The Illinois Medical District (IMD) Station Improvements



Project Title: Racine Station ADA & Traction Power Improvement Project



Racine Stationhouse Looking Northeast



Project Title: Racine Station ADA & Traction Power Improvement Project



Racine Stationhouse Interior & CA Kiosk



Project Title: Racine Station ADA & Traction Power Improvement Project



Racine Platform Canopy Purlin Installation



Project Title: Racine Station ADA & Traction Power Improvement Project



Racine Electrical Receiving Pit



Project Title: Racine Station ADA & Traction Power Improvement Project



Morgan Substation Entrance Forms & Rebar Installation



Project Title: Racine Station ADA & Traction Power Improvement Project



Morgan Substation Looking Southeast



Project Title: Refreshed & Renewed

Justification of Need:

The Refreshed & Renewed Program is a CTA Facilities Maintenance implemented plan to promote safety, security and longevity to all CTA Facilities including, but not limited to: Rail Stations and Platforms, Bus Garages and Rail Shops across the system. The Refreshed & Renewed Program performs major improvement work at these transit operations facilities for both the customer and the internal needs of the Authority.

Priority of Project:	Medium
Total Project Budget:	\$6,500,000
Expended to Date:	\$636,170
Used last Month:	\$187,597
Funding Source:	Various
Estimated Start Date/Estimated Length of Project:	January 2021 to December 31, 2025
Contractor	CTA Forces

28 Rail Stations and 14 Bus-turn-arounds will receive lighting upgrades, painting and deep cleaning as part of this program for the current year.

28 Stations and 14 Bus-turn-arounds will have a detailed Scope of work which includes:

- Maintaining Cleanliness throughout public, as well as back-of-house areas
- Ensuring stations are graffiti free;
- Re-painting painted surfaces;
- Maintaining pathways of ingress and egress are clear of obstruction;
- LED lighting conversions and component;
- Removing obstructions from windows and store front systems that may impede natural light and safe viewing points.
- Address and repair any unsafe defects such as spalling concrete and rotted wooden platforms;
- Replacing outdated and damaged signage;
- Maintaining a warm/cool working environment.



Project Title: Refresh & Renew

Department	Description	Status
Facility Maintenance	<u>Rail Stations Full Program Scope 28 Stations (4 of 28 Completed)</u> <ul style="list-style-type: none"> • 35th/Bronzeville-Green • Sox/35th-Red • Addison-Red • Pulaski-Blue(Congress) • Oak Park-Green • Austin-Blue • Kedzie-Homan -Blue • Rockwell-Brown • 63rd-Red • Damen-Pink • Polk-Pink 	Completed Completed Completed Completed On-going On-going On-going Scheduled Scheduled Scheduled Scheduled
	<u>Bus Turnaround Full Program (3 of 14 Completed)</u> <ul style="list-style-type: none"> • Halsted/Waveland • 55th/St. Louis • Kedzie/63rd • 79th/Western • Chicago/Austin • 67th/Oglesby 	Completed Completed Completed On-going Scheduled Scheduled

Delay Explanation:

N/A



Project Title: Refresh & Renew

Before



After



**Pulaski/Blue (Congress) – Aux Entrance Security,
Painting & Cleanup**



Project Title: Refresh & Renew

Before



After



Addison/Red – Structural Painting & Lighting Upgrades



Project Title: Refresh & Renew

Before



After



35th/Bronzeville /Green – Painting & Clean-up



Project Title: Refresh & Renew

Before



After



Sox/35th /Red – Paint & Signage



Project Title: Refresh & Renew

Before



After



Halsted & Waveland BTA – Roof Repairs & Painting



Project Title: Refresh & Renew

Before



After



Kedzie & 63rd BTA – Windbreak Rehab



Project Title: Refresh & Renew

Before



After



**55th & St. Louis BTA –
Floor & Door Painting**





Project Title: RPM Phase One – Design-Build Contract

Justification of Need:	The RPM Phase One Project is greatly needed in order to expand capacity on CTA's most utilized rail line and to replace aging infrastructure.	
Priority of Project:	High	
Total Project Budget:	\$ 2.1 Billion (excludes Transit TIF interest payments)	
Construction Contract Value:	Original - \$1,272,275,929 Current - \$1,421,783,997 (through Change Order 9)	
Earned to Date:	87.39%	
Percent Change Orders to Construction Contract:	11.8%	
Percent Time Used:	78.88%	
DBE:	Design: Goal: 20% / Commitment: 20.64% Construction Goal: 20% / Commitment: 20% Workforce Goals: 10% WIOA / 15% Apprentice / 35% EDA	Contractor is on track to meet the DBE goal
Funding Source:	CTA Financing, FTA Core Capacity Grant, CMAQ, TIFs	
NTP / Construction Start / Estimated Completion:	February 8, 2019 / October 2019 / 2026	
Design-Build Contractor:	Walsh-Fluor Design-Build Team	
Owners Representative:	Elevated Solutions Partners	
Detailed Overview of Scope:	RPM Phase One consists of the following elements that will allow CTA to expand service along the Red and Purple lines:	
	<ul style="list-style-type: none"> • Lawrence to Bryn Mawr Modernization (LBMM) – complete reconstruction and addition of ADA accessibility at four Red Line stations (Lawrence, Argyle, Berwyn, and Bryn Mawr) and reconstruction of 6 miles of track, structures, and viaducts from Leland Ave. to Ardmore Ave. • Red-Purple Bypass (RPB) - Construction of a grade-separated bypass for the Brown Line at Clark Junction, just north of Belmont Ave. Includes realignment and reconstruction of 1.4 miles of mainline tracks and structure between Belmont station and south of Cornelia Ave. • Corridor Signal Improvements (CSI) – Installation of new higher-capacity signal system on 23 miles of track between Belmont and Howard stations. 	



Project Title: RPM Phase One – Design-Build Contract

Phase	Description	Status
Administrative / Design:	<ul style="list-style-type: none"> ▪ Continued submittal/revisions of required management plans ▪ Continued Design Development in support of Signal Improvements ▪ Red-Purple Bypass (RPB) <ul style="list-style-type: none"> – North Mainline Stage 3 track work 	<p>Ongoing Ongoing</p>
Construction:	<ul style="list-style-type: none"> – Ravenswood Stage 3 track work and structural repairs – Progressed through RPB Stage 3J.4, 3J.3 and 3J.2 activities. Restored RV2 Kenmore to Clark Junction to service. Prepped for restoration of RV1 ▪ Lawrence to Bryn Mawr Modernization <ul style="list-style-type: none"> – Bryn Mawr and Hollywood Aux Station <ul style="list-style-type: none"> – Building Finishes – MEP and Communications – Elevator/escalator work – Permanent platform finishes and fixtures – Berwyn and Aux Station <ul style="list-style-type: none"> – MEP and Communications – Building Finishes – Elevator/Escalator work – Permanent platform finishes and fixtures – Argyle Station <ul style="list-style-type: none"> – Platform canopy roof – Permanent Platform Finishes and Fixtures – MEP work – Building Finishes – Lawrence Station <ul style="list-style-type: none"> – Structural building work – Platform canopy roof – MEP work – Building Finishes – Trackwork – plinths, fastener plates and rails NM1 & NM2: Ainslie to Leland nearing completion installation and Structure finishing activities – Street and alleyway reconstruction and Public ROW Utilities – Started installation of traction power chairs, contact rail and ANR rail ▪ Corridor Signal Improvements (CSI) <ul style="list-style-type: none"> – Commissioning of signal equipment for RV1 and RV2 from Kenmore to at Clark Junction – Signal Testing at Barry Relay House, Clark Relay House, and Addison Relay House for ongoing RPB Stage changes – Continued snake tray, signal junction box, fiber slack enclosure and systems cabling installation from Winona towards Lawrence along NM1 in the LBMM area – Began distribution of wayside signal equipment along NM1 and NM2 from Thorndale to Lawrence 	<p>Ongoing Completed Ongoing</p> <p>Ongoing Ongoing Ongoing Ongoing</p> <p>Ongoing Ongoing Ongoing Ongoing</p> <p>Completed Ongoing Ongoing Ongoing</p> <p>Ongoing Ongoing Ongoing Ongoing</p> <p>Ongoing Ongoing Ongoing Ongoing</p> <p>Ongoing Ongoing Ongoing Ongoing</p>

Red-Purple Bypass



**Plinths
Formwork
Installation**



Red-Purple Bypass

**Clark
Junction
Before**





Project Title: RPM Phase One – Design-Build Contract

Red-Purple Bypass



**Clark
Junction
After**



Project Title: RPM Phase One – Design-Build Contract

Red-Purple Bypass



Clark Junction



Lawrence to Bryn Mawr Modernization



Lawrence Platform Stair Installation



Lawrence to Bryn Mawr Modernization



**Bryn Mawr Kiosk
and Fare Gate
Installation**



Project Title: RPM Phase One – Design-Build Contract

Lawrence to Bryn Mawr Modernization



**Under L Light
Installation at
Argyle**



Lawrence to Bryn Mawr Modernization



Argyle Platform Sign Installation



Project Title: RPM Phase One – Design-Build Contract

Community Outreach

Major Activities

Timing



The RPM team provided a project tour to students and staff from Northwestern University

- Weekly Red-Purple Bypass Project updates for 44th ward Weekly
- Lawrence to Bryn Mawr project updates for 46th, 48th wards Bi-weekly
- Edgewater Chamber of Commerce networking event April 3
- Northwestern University Transportation Club student project tour April 8
- Monthly virtual office hours (April) April 11



RPM Phase One Design-Build DBE Attainment Through March 31, 2025

122

unique DBE firms

55

new to CTA



DBEs have been awarded

\$299,657,683



Have been paid

\$233,015,988

The prime contractor is on-track to meeting their 20% DBE goal

20%

DBE Awards

21.08%

DBE Payments

20.56%



RPM Phase One Design-Build Workforce Attainment Through March 31, 2025



2,733

RPM Phase I has created **2,733** construction trade labor jobs on the design-build team



Labor Hours Worked

2,382,897.52



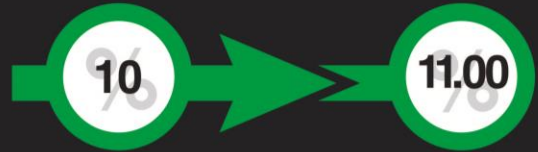
Wages Earned

\$142,589,857.10

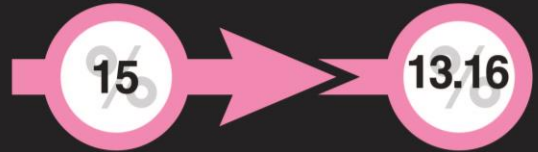
RPM Phase I Workforce Goals

Goals

Attainment



Workforce Innovation & Opportunity Act (WIOA)



Apprenticeship



Economically Disadvantaged Area (EDA)



Highlighted Events

Spring Pre-Apprenticeship Fair

Date: 3/28/2025

Location: South Suburban College



261

Attendees

28

Exhibitors



Connect individuals interested in a career in the building trades to resources and employment opportunities with the CTA, building trade unions, and our contractors.



Highlighted Events

Painters Union District Council 14 Event

Date: 3/24/2025

Location: Painters District Council 14 HQ



Connect non-union painting contractors with the information and resources to become union signatory.



Highlighted Events

Spring Citywide Career Fair

Date: 4/23/2025

Location: Olive-Harvey College



505

Attendees

80

Exhibitors



Connect job-seekers with resources and employment opportunities in various industries including transportation & logistics, healthcare, retail, law enforcement, construction, retail, and customer service.



Highlighted Events

Small Business Educational Series Graduation

Date: 4/8/2025

Location: CTA HQ



22

Participants



9-week, cohort program that teaches construction-focused small business how to compete for and be successful on CTA projects.



March 2025 Outreach Events

CTA Small Business Educational Series: On Schedule and On Budget presented by Spann Tech	March 4, 2025	CTA Small Business Educational Series: Conflict Management for Government Contracts	March 18, 2025
Chinese Mutual Aid Association Inaugural Small Business Expo	March 5, 2025	CTA X Painters Union District Council 14 Event	March 24, 2025
2nd Annual Illinois Government Contracting Summit	March 11, 2025	CTA Small Business Educational Series: Growing your Business with Social Media	March 25, 2025
CTA Small Business Educational Series: Getting Paid and Closing It Out presented by CD Smith and Jacobs	March 11, 2025	2025 Driving Small Businesses the Distance: Submitting A Bid	March 26, 2025
Chicago Public Schools - 2025 Skilled Trades: Putting Chicago to Work	March 12, 2025	African-American Contractors Association Gala	March 26, 2025
March into Madness Job Fair	March 12, 2025	2025 The City of Chicago Construction Summit	March 27, 2025
MBDA 3rd Annual Business Summit	March 13, 2025	CTA Workforce Spring Pre- Apprenticeship Fair	March 28, 2025



April 2025 Outreach Events

DBE Advisory Committee Meeting	April 1, 2025	RLE Meet The Contractor Community Meeting (10th Ward)	April 15, 2025
CTA Small Business Educational Series	April 1, 2025	Senator Simmons Job & Resource Fair	April 16, 2025
Red Line Extension (RLE) Meet The Contractor Community Meeting (21st Ward)	April 8, 2025	Building Small Businesses (BSB) Orientation	April 17, 2025
CTA Small Business Educational Series Graduation	April 8, 2025	2025 Driving Small Businesses the Distance: What to watch out for in being a prime or a sub	April 23, 2025
Illinois Hispanic Chamber of Commerce (IHCC) Breakfast (RLE Road Show)	April 10, 2025	Spring City Wide Career Fair	April 23, 2025
RLE Meet The Contractor Community Meeting (9th Ward)	April 10, 2025	RLE Community Meeting: 99th & Yale Block Club	April 23, 2025
Sister Agency Roundtable	April 15, 2025	RLE Community Meeting: Genesis/Concordia Place Apartments	April 24, 2024