



# Construction Project Briefing



November 13, 2024



# Today's Presentation

- Traction Power Upgrades - Canal Tie House, Barry and Damen Substations
- Western Brown line Station Improvements
- O'Hare Line – Harlem Station Bus Bridge Improvements
- Racine Station ADA & Traction Power Improvement Project
- Refresh & Renew Project
- Red and Purple Modernization Project



# Project Title: Traction Power Upgrades – Canal Tie House, Barry and Damen Substations

The CTA has identified additional traction power demands based on results from the Blue Line Load Flow study and determined that three (3) areas along the blue line O'Hare branch and Dearborn subway may experience problems with running the new fleet at the service levels proposed. To continue providing a reliable and safe service, it is necessary to build two (2) new traction power substations, one at Barry and the other at Damen with all their infrastructure support along with installing a new Tie Breaker house in the Dearborn subway. Also, the project includes the replacement of all traction power equipment at the Haymarket substation.

### Justification of Need:

Priority of Project:	High
Total Project Budget:	\$122.8 Million
Construction Contract Value:	\$67.9 Million
Earned to Date:	86% (As of September 2024)
Percent Change Orders to Construction Contract:	16.7%
Percent Time Used:	105.5% (As of September 2024)
DBE:	Goal: 25% Commitment: 25.3% Workforce Goals: 10% Career Opportunity/ 8% Apprentice/ 25% EDA Contract is on track to meet the DBE goal
Funding Source:	CTA Bonds / Rebuild Illinois
Estimated Start Date/Estimated Length of Project:	NTP: October 20, 2021, Estimated Duration 1020 days/Substantial Completion August 5, 2024
Designer of Record:	TYLin
Construction Manager/General Contractor:	WSP / John Burns Construction



# Project Title: Traction Power Upgrades – Canal Tie House, Barry and Damen Substations

Impact on Customers:	Minor service disruptions during track access occurrences.
Benefit to System:	The new Traction Power Substation will increase service reliability to the Blue Line.
Benefit to Community:	New buildings will enhance and will blend with the surrounding community and will benefit transit riders in the Blue Line with a safer and more reliable service.
Impact on Accessibility:	N/A
Customer Communication Need:	Construction Activity Notices.

## Comparable Projects:

East Lake, Milwaukee & Illinois (ELMI) and Broadway substations

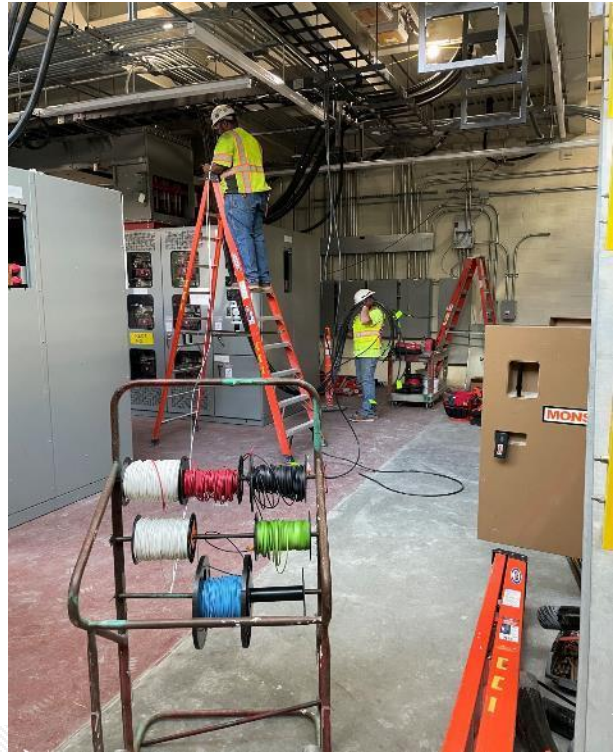


# Project Title: Traction Power Upgrades – Canal Tie House, Barry and Damen Substations

## Construction Progress

Phase	Description	Status
<b>Haymarket Substation</b>	<ul style="list-style-type: none"><li>• Equipment testing and commissioning</li><li>• Parking Lot Restoration</li></ul>	Ongoing Ongoing
<b>Canal Tie-House</b>	<ul style="list-style-type: none"><li>• Commission Tie-House</li><li>• Interior Tie-House Build-Out</li><li>• Cable connections to Tie-House</li></ul>	Ongoing Ongoing Ongoing
<b>Damen Substation</b>	<ul style="list-style-type: none"><li>▪ Installation of Traction Power Equipment</li><li>• Equipment Testing and Commissioning</li><li>• Build building interior, flooring, rooms and finishes</li></ul>	Ongoing Upcoming Ongoing
<b>Barry Substation</b>	<ul style="list-style-type: none"><li>• Installing substation electrical equipment.</li><li>• Build exterior walls and roof.</li><li>• Build building interior, flooring, rooms and finishes</li></ul>	Upcoming Ongoing Upcoming
<b>Belmont Crossover</b>	<ul style="list-style-type: none"><li>• Punchlist work.</li></ul>	Ongoing

# Project Title: Traction Power Upgrades – Canal Tie House, Barry and Damen Substations



**Interior Electrical Installation at Damen**



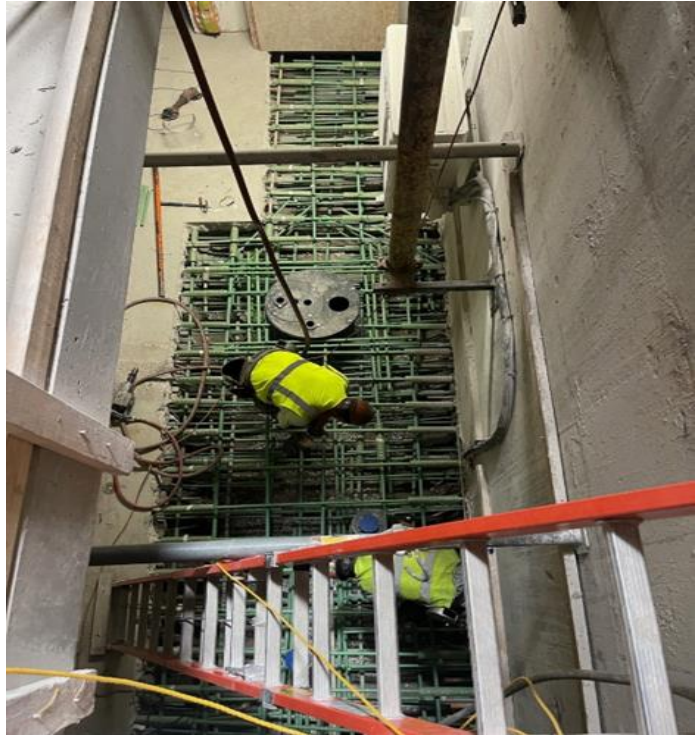
# Project Title: Traction Power Upgrades – Canal Tie House, Barry and Damen Substations



**Curtainwall Installation at Barry**



# Project Title: Traction Power Upgrades – Canal Tie House, Barry and Damen Substations



**Pavement Restoration/Pump Installation at Barry**





# Project Title: Traction Power Upgrades – Canal Tie House, Barry and Damen Substations



**Interior Build-Out at Canal Tie-House**



# Project Title: Western Brown Line Station Improvements

## Justification of Need:

Improvements to Ravenswood Western Station are necessary to bring the station into compliance with current provisions of the Americans with Disabilities Act (ADA), adapt to redeveloped adjacent storefronts, improve security, and extend the useful life of the station through replacement of deteriorated site, building, and platform components. This project is being delivered by a progressive design build delivery method, which is advantageous for both schedule and the design to budget requirement.

Priority of Project:	Medium
Total Project Budget:	\$30.0 M
Construction Contract Value:	\$19.0 M
Earned to Date:	\$7.0 M
Percent Change Orders to Construction Contract:	0
Percent Time Used:	19%
DBE:	DBE goal: 30%. DBE Firms: American Survey & Engineering, PC, Facet Engineering, GSG Consultants. Inc., Quigg Engineering.
Funding Sources:	Chicago Tax Increment Funding, Federal 2022, Federal 2023, CTA bonds
Estimated Start Date/Estimated Length of Project:	GC NTP1: May 11, 2023; NTP2: 8/6/24. Substantial Completion: January 13, 2026 (NTP2 + 525 days)
Designer of Record:	CDM Smith
Construction Manager/General Contractor:	CM: AECOM. GC: FH Paschen.



# Project Title: Western Brown Line Station Improvements

Impact on Customers:	CTA customers may be redirected to use alternate station entrance. Platform closures and back rides will be necessary. The work will also require some temporary bus reroutes and lane closures on Western and Lincoln.
Benefit to System:	State of good repair improvements to the building envelope, platform, platform guardrails and canopy, and interior finishes. New customer assistant booth, reconstructed operator bathroom facility.
Benefit to Community:	Increased station accessibility, improved safety through renovated sidewalks, walkway pavements, lighting, cameras, and signage. Overall improved appearance as a result of painting.
Impact on Accessibility:	New ADA-compliant curbs, bus turnaround islands, replacement of elevator cabs and sidewalks for improved accessibility.
Customer Communication Need:	Construction Activity Notices, coordination with Alderman, press releases.

## Comparable Projects:

Quincy Loop Station Upgrade



# Project Title: Western Brown Line Station Improvements

## Construction Progress

Phase	Description	Status
<b>Construction</b>	<b>Stage 1 - Advance Package</b>	
	Cleaning and painting of track structure	Complete
	Cleaning and painting of platform guardrails and canopy	Complete
	Remediation of pigeon waste on station roof	Complete
	Platform edge repair Inbound	Complete
	Platform concrete spalling repair	Complete
	<b>Stage 2 Construction</b>	
	Permitting	On-going
	Building Envelope (masonry repairs, storefront replacement)	Q2 '25
	Electrical Upgrade	Q3 '25
<b>Design</b>	Elevator Cab Replacement	Q4 '25
	Stage 1 Design – 100%	Complete
	Stage 2 Design – 90%	Under Review
	Stage 2 Design – 100%	11/27/24



# Project Title: Western Brown Line Station Improvements



**Canopy Before Painting**



# Project Title: Western Brown Line Station Improvements



**Inbound Platform – Painting Canopy Steel**



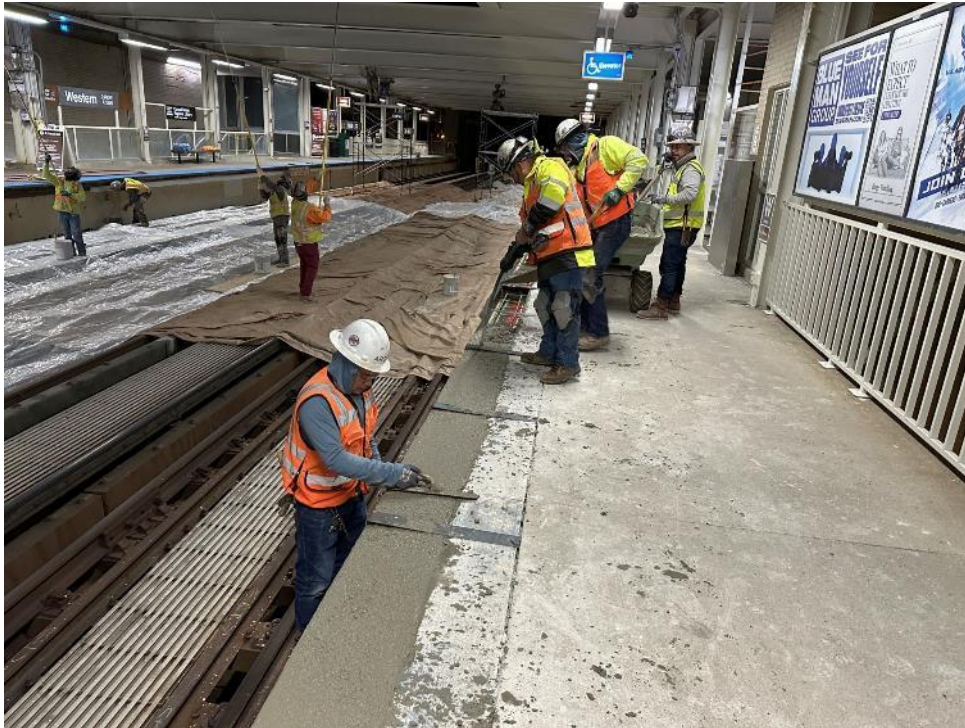
# Project Title: Western Brown Line Station Improvements



**Pumping Concrete to Buggy from Western Avenue Median**



# Project Title: Western Brown Line Station Improvements



**Platform edge replacement – Placing New Concrete Nosing**





# Project Title: O’Hare Line – Harlem Station Bus Bridge Reconstruction

**Justification of Need:** The condition of the Harlem Station bus bridge was initially identified as an infrastructure need in 2013. At that time, CTA noted significant deterioration to the concrete deck, concrete piers, and structural steel support elements due to salt corrosion and water infiltration. More recently, critical defects caused by concrete deck expansion joint failure have been identified in the south pier. The bridge needs to be replaced before it becomes a safety hazard and has to be taken out of service.

Priority of Project:	Medium
Total Project Budget:	\$40.0 M
Construction Contract Value:	\$20.4 M
Earned to Date:	\$7.0M
Percent Change Orders to Construction Contract:	0
Percent Time Used:	79%
DBE:	DBE goal: 25%. DBE Firms: MW Powell, Highway Safety Corp., Argo Construction LLC, Vision Painting, Alpine Demolition, W.E.B. Production & Fabricating, AC Iron LLC, S & J Construction, Livewire Electrical Systems.
Funding Sources:	Rebuild Illinois, Federal 2020, Federal 2016, Surface Transportation Program (CMAP)s
Estimated Start Date/Estimated Length of Project:	GC NTP: September 5, 2023. Substantial Completion: March 8, 2025 (NTP + 550 days)
Designer of Record:	HNTB
Construction Manager/General Contractor:	CM: TranSystems/TY Lin JV. GC: John Burns Construction Company.



# Project Title: O'Hare Line – Harlem Station Bus Bridge Reconstruction

Impact on Customers:	Minor changes in bus service and Park & Ride access for those who use the Harlem Blue Line Station on the O'Hare Branch. Rail service will not be impacted.
Benefit to System:	New bridge superstructure and interface between bridge and station, new concrete approaches, bridge deck, ADA-compliant curbs and sidewalks, new canopy on bridge. New bus operator bathroom facility, painting, improved drainage.
Benefit to Community:	Replacement of the bridge before it becomes unsafe will help ensure continuity of service on bus routes out of the O'Hare Line Harlem Station.
Impact on Accessibility:	New ADA-compliant curbs and sidewalks for improved accessibility.
Customer Communication Need:	Construction Activity Notices, coordination with Alderman, press releases.

## Comparable Projects:

Montrose Bridge Replacement (IDOT).



# Project Title: O'Hare Line – Harlem Station Bus Bridge Improvements

## Construction Progress

Phase	Description	Status
<b>Construction</b>	• Repour Top of Bridge Abutment Walls	Completed
	• Selective Demolition of South Bridge Pier	Completed
	• Cut the Top of Pier #2 Columns (center pier)	Completed
	• Set Bridge Bearings Abutments and Center Pier	On-Going
	• Install and Detail New Structural Bridge Steel	Planned mid Q4
	• Pour New Bridge Deck	Planned Late Q4
	• Pour Parapet Wall and Sidewalk	Planned Spring '25
	• Install below bridge lighting	Planned Spring '25



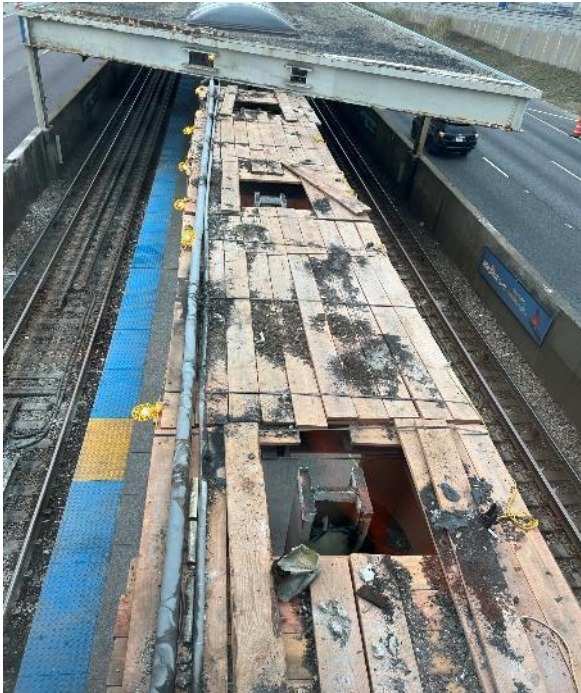
# Project Title: O'Hare Line – Harlem Station Bus Bridge Reconstruction



**View of Station Looking North**



# Project Title: O'Hare Line – Harlem Station Bus Bridge Reconstruction



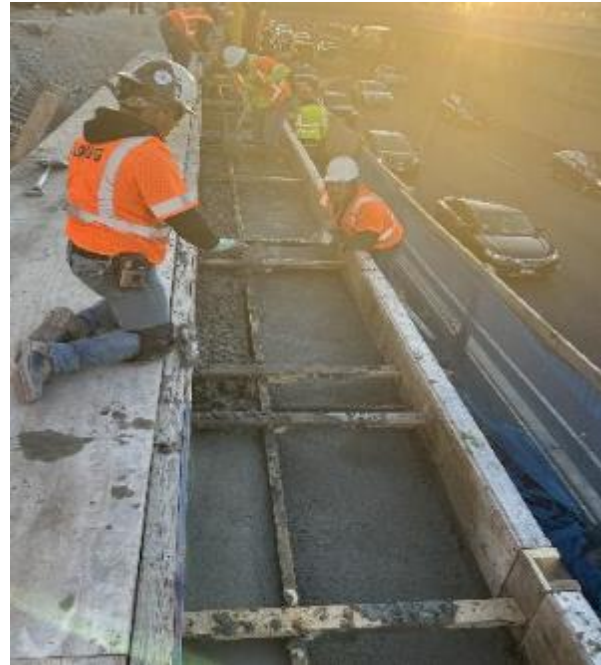
**Center Columns at Platform – Completed Column Top**



# Project Title: O'Hare Line – Harlem Station Bus Bridge Reconstruction



**South Abutment Poured**



**North Abutment Concrete  
Being Placed**



# Project Title: Racine Station ADA & Traction Power Improvement Project

## Justification of Need:

The existing Racine station is not accessible, and the ADA Improvements will add an elevator, and provide an ADA compliant ramp with adequate clearances for wheelchairs and mobility devices. In addition, to accommodate growth in ridership and maintain reliable service, the CTA procured newer generations of rail car fleets, which required traction power improvements consisting of constructing a new Morgan substation as well as upgrading existing traction power equipment within the Hermitage substation to meet higher power demands on the Forest Park branch of the Blueline.

Priority of Project:	High
Total Project Budget:	\$106,217,468
Construction Contract Value:	\$75,400,000
Earned to Date:	40% (thru September 2024)
Percent Change Orders to Construction Contract:	0%
Percent Time Used:	54% (thru September 2024)
DBE:	Goal: 25% Commitment: 25% Workforce Goals: 10% Career Opportunity, 15% Apprentice, 25% EDA The contract is on track to meet the DBE goal
Funding Source:	IDOT - Rebuild Illinois
Estimated Start Date/Estimated Length of Project:	NTP: 5/12/2023, Project Duration: 925 days (NTP through Substantial Completion)
Designer of Record:	HNTB
Construction Manager/General Contractor:	Congress Corridor Partners, a JV between (WSP/Ardmore) / F.H. Paschen, S.N. Nielsen & Associates



# Project Title: Racine Station ADA & Traction Power Improvement Project

Impact on Customers:	<ul style="list-style-type: none"> <li>• Minor service disruptions during 54hr weekend TAOs.</li> <li>• No rail service between IMD and UIC-Halsted stations during weekend linecuts.</li> <li>• The Racine station will be OOS during the weekend linecuts.</li> <li>• No access to Racine stationhouse from Racine street until completely rebuild, the Loomis stationhouse will remain in service during this time.</li> <li>• Local bus shuttles will be provided during weekend linecuts.</li> </ul>
Benefit to System:	<ul style="list-style-type: none"> <li>• The project will make the Racine station fully accessible.</li> <li>• The project will add more power to boost reliability and meet service demands.</li> <li>• The project will reduce the Racine station and Hermitage substation maintenance needs.</li> </ul>
Benefit to Community:	<ul style="list-style-type: none"> <li>• When completed, the project is expected to accommodate all the accessibility needs for riders traveling through the Racine station utilizing various mobility devices.</li> </ul>
Impact on Accessibility:	<ul style="list-style-type: none"> <li>• YES</li> </ul>
Customer Communication Need:	<ul style="list-style-type: none"> <li>• GCR outreach with surrounding stakeholders.</li> <li>• Construction activity notices will be distributed as needed.</li> <li>• Advanced service disruption signs and posters will be installed as needed.</li> </ul>

## Comparable Projects:

The Illinois Medical District (IMD) Station Improvements





# Project Title: Racine Station ADA & Traction Power Improvement Project

## Construction Progress

Phase	Description	Status
<b>Construction</b>	<p><b>Racine Stationhouse Entrance:</b></p> <ul style="list-style-type: none"> <li>• Structure &amp; shell</li> <li>• Main stairs and elevator</li> <li>• Bridge level interiors</li> <li>• Electrical and mechanical rooms</li> <li>• Electrical and sanitary underground services</li> </ul> <p><b>Racine Platform New Concourse Extension:</b></p> <ul style="list-style-type: none"> <li>• Structure &amp; shell</li> <li>• MEP and communication systems</li> </ul> <p><b>Racine Platform and Canopy:</b></p> <ul style="list-style-type: none"> <li>• Canopy demolition and restoration</li> <li>• MEP and communication systems</li> </ul> <p><b>Loomis Stationhouse Entrance:</b></p> <ul style="list-style-type: none"> <li>• Demolition of existing stationhouse, ramp and columns</li> <li>• Structure &amp; Shell</li> <li>• Bridge Level Interiors</li> <li>• Electrical and Mechanical Rooms</li> <li>• Electrical and Sanitary Underground Services</li> </ul> <p><b>Loomis New ADA Ramp:</b></p> <ul style="list-style-type: none"> <li>• Installation of new ADA ramp and columns</li> <li>• Installation of new ramp roofing system and MEP</li> </ul> <p><b>Morgan Substation:</b></p> <ul style="list-style-type: none"> <li>• Structure &amp; shell</li> <li>• Bridge (1<sup>st</sup>) level and equipment (2<sup>nd</sup>) level interiors</li> <li>• Electrical and sanitary underground services</li> <li>• Traction power equipment delivery, installation, testing and commissioning</li> </ul> <p><b>Hermitage Substation:</b></p> <ul style="list-style-type: none"> <li>• Removal of existing traction power equipment</li> <li>• Traction power equipment delivery, installation, testing and commissioning</li> </ul>	<p>Ongoing Ongoing Ongoing Ongoing Planned</p> <p>Ongoing Planned</p> <p>Ongoing Ongoing</p> <p>Planned Planned Planned Planned Planned</p> <p>Planned Planned</p> <p>Ongoing Ongoing Planned Planned</p> <p>Planned Planned</p>

### Delay Explanation:

N/A



# Project Title: Racine Station ADA & Traction Power Improvement Project



**Racine Stationhouse South Wall Construction**



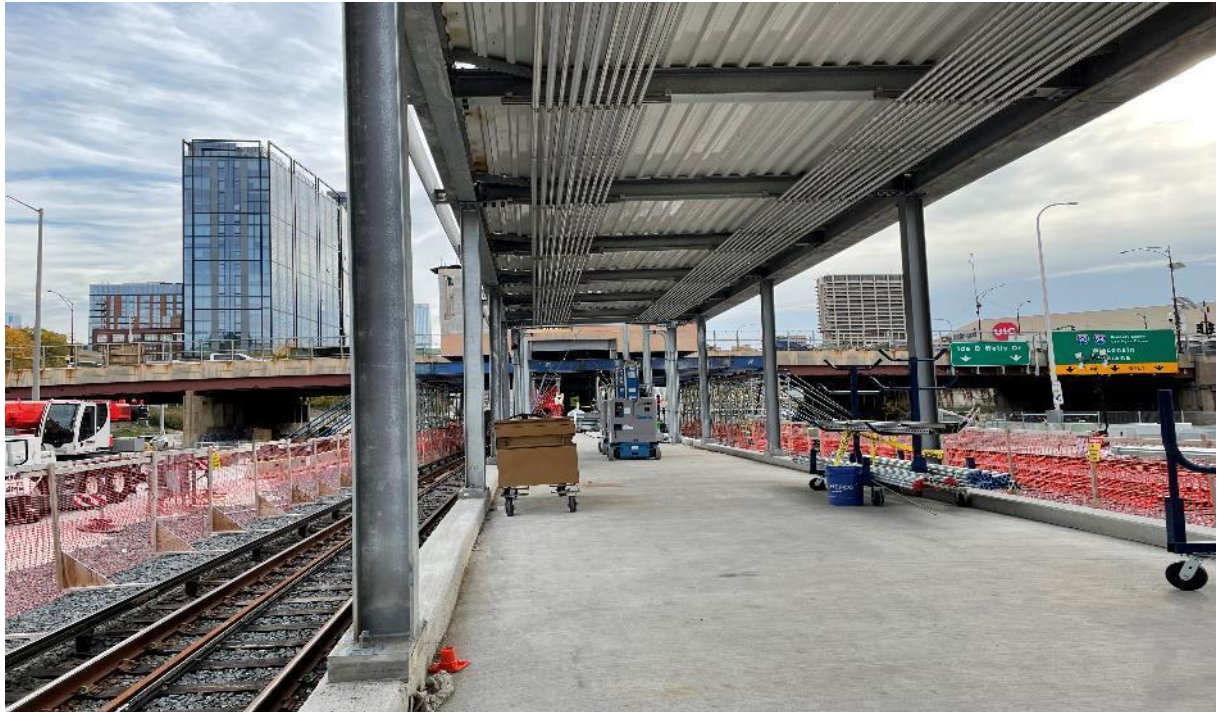
# Project Title: Racine Station ADA & Traction Power Improvement Project



**Racine Stationhouse North Wall Construction**



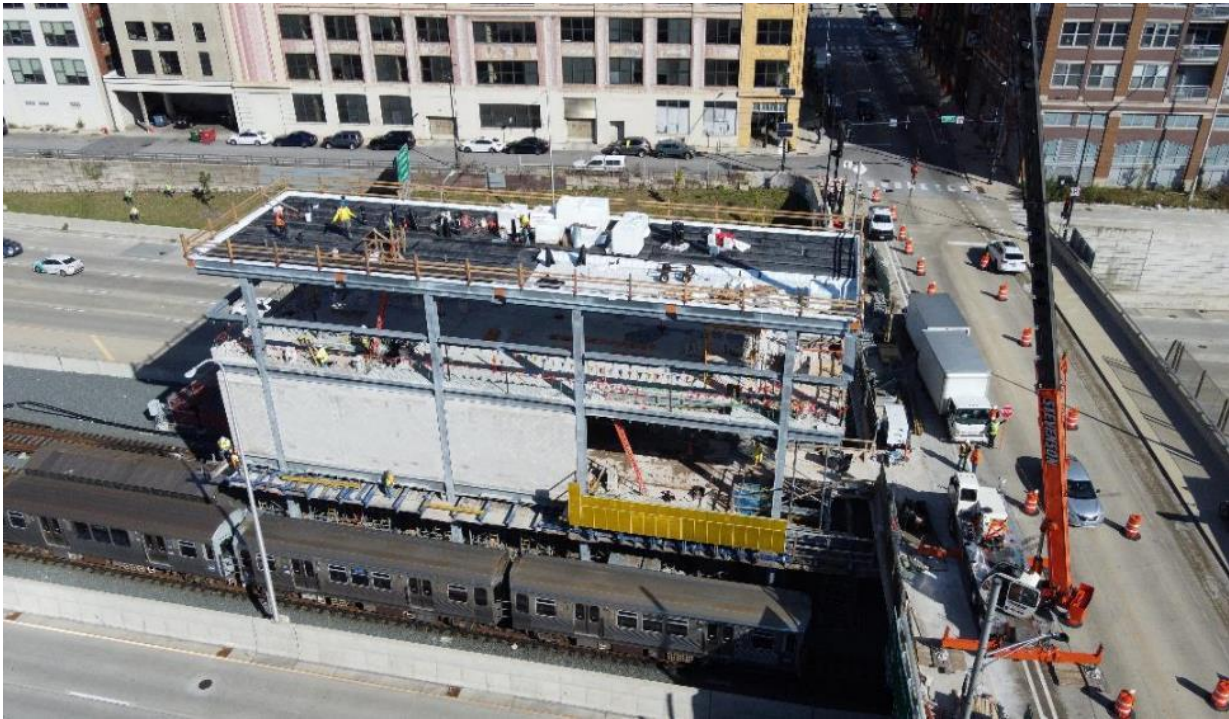
# Project Title: Racine Station ADA & Traction Power Improvement Project



**Racine Platform Extension Roofing and Conduits**



# Project Title: Racine Station ADA & Traction Power Improvement Project



**Morgan Substation Construction (1<sup>st</sup>, 2<sup>nd</sup>, Top Roof) levels**



# Project Title: Refreshed & Renewed

The Refreshed & Renewed Program is a CTA Facilities Maintenance implemented plan to promote safety, security and longevity to all CTA Facilities including, but not limited to: Rail Stations and Platforms, Bus Garages and Rail Shops across the system. The Refreshed & Renewed Program performs major improvement work at these transit operations facilities for both the customer and the internal needs of the Authority.

## Justification of Need:

Priority of Project:	Medium
Total Project Budget:	\$6,500,000
Expended to Date:	\$1,954,835
Used last Month:	\$179,440
Funding Source:	Various
Estimated Start Date/Estimated Length of Project:	January 2021 to December 31, 2024
Contractor	CTA Forces

**29 Rail Stations and 14 Bus-turn-arounds will receive lighting upgrades, painting and deep cleaning as part of this program for the current year.**

### **29 Stations and 14 Bus-turn-arounds will have a detailed Scope of work which includes:**

- Maintaining Cleanliness throughout public, as well as back-of-house areas
- Ensuring stations are graffiti free;
- Re-painting painted surfaces;
- Maintaining pathways of ingress and egress are clear of obstruction;
- LED lighting conversions and component;
- Removing obstructions from windows and store front systems that may impede natural light and safe viewing points.
- Address and repair any unsafe defects such as spalling concrete and rotted wooden platforms;
- Replacing outdated and damaged signage;
- Maintaining a warm/cool working environment.



# Project Title: Refresh & Renew

Department	Description	Status
<b>Facility Maintenance</b>	<p><u>Rail Stations Full Program Scope 29 Stations (24 of 29 Completed)</u></p> <ul style="list-style-type: none"><li>• Cicero-Pink</li><li>• Kedzie-Pink</li><li>• Ridgeland-Green</li><li>• Sedgwick-Brown</li><li>• Paulina-Brown</li><li>• Davis</li><li>• Oakton/Skokie-Yellow</li><li>• Grand-Red</li><li>• Granville-Red</li></ul> <p><u>Bus Turnaround Full Program (12 of 14 Completed)</u></p> <ul style="list-style-type: none"><li>• Grand/Streeter (Navy Pier)</li><li>• 47th/Lake Park</li><li>• Austin/Jackson</li><li>• Division/Austin</li><li>• Grand/Nordica</li><li>• Grand/Latrobe</li></ul>	<p>Completed</p> <p>Completed</p> <p>Completed</p> <p>Completed</p> <p>In Progress</p> <p>In Progress</p> <p>Scheduled</p> <p>Scheduled</p> <p>Scheduled</p> <p>Completed</p> <p>Completed</p> <p>Completed</p> <p>Completed</p> <p>In Progress</p> <p>Scheduled</p>

## Delay Explanation:

N/A



# Project Title: Refresh & Renew

**Before**



**After**



**Kedzie/Pink – LED lighting upgrades & Hardwood Floor Refinishing**





# Project Title: Refresh & Renew

**Before**



**After**



**Kedzie/Pink – LED lighting upgrades & Painting**



# Project Title: Refresh & Renew

**Before**

**After**



**Ridgeland/ Green – Painting, Ceiling repairs & LED fixture replacement**



# Project Title: Refresh & Renew

**Before**



**After**



**Ridgeland/ Green – Platform LED lighting upgrades**



# Project Title: Refresh & Renew

Before

After



Sedgewick/Brown – LED lighting upgrades



# Project Title: Refresh & Renew

**Before**



**After**



**Division/Austin BTA – Painting & LED lighting replacements**



# Project Title: Refresh & Renew

**Before**

**After**



## 47<sup>th</sup>/Lake Park BTA – Painting and Refurbishment



# Project Title: Refresh & Renew

**Before**

**After**



## Austin/Jackson BTA – Floor Tile Installation



# Project Title: RPM Phase One – Design-Build Contract

<b>Justification of Need:</b>	The RPM Phase One Project is greatly needed in order to expand capacity on CTA's most utilized rail line and to replace aging infrastructure.	
Priority of Project:	High	
Total Project Budget:	\$ 2.1 Billion (excludes Transit TIF interest payments)	
Construction Contract Value:	Original - \$1,272,275,929    Current - \$1,383,992,301	
Earned to Date:	81.7%	
Percent Change Orders to Construction Contract:	8.8%	
Percent Time Used:	85.2%	
DBE:	Design: Goal: 20% / Commitment: 20.64% Construction Goal: 20% / Commitment: 20% Workforce Goals: 10% WIOA / 15% Apprentice / 35% EDA	Contractor is on track to meet the DBE goal
Funding Source:	CTA Financing, FTA Core Capacity Grant, CMAQ, TIFs	
NTP / Construction Start / Estimated Completion:	February 8, 2019 / October 2019 / 2025	
Design-Build Contractor:	Walsh-Fluor Design-Build Team	
Owners Representative:	Elevated Solutions Partners	
<b>Detailed Overview of Scope:</b>	RPM Phase One consists of the following elements that will allow CTA to expand service along the Red and Purple lines:	
	<ul style="list-style-type: none"> <li>• Lawrence to Bryn Mawr Modernization (LBMM) – complete reconstruction and addition of ADA accessibility at four Red Line stations (Lawrence, Argyle, Berwyn, and Bryn Mawr) and reconstruction of 6 miles of track, structures, and viaducts from Leland Ave. to Ardmore Ave.</li> <li>• Red-Purple Bypass (RPB) - Construction of a grade-separated bypass for the Brown Line at Clark Junction, just north of Belmont Ave. Includes realignment and reconstruction of 1.4 miles of mainline tracks and structure between Belmont station and south of Cornelia Ave.</li> <li>• Corridor Signal Improvements (CSI) – Installation of new higher-capacity signal system on 23 miles of track between Belmont and Howard stations.</li> </ul>	







## Red-Purple Bypass



**North Main Line  
Noise wall  
Installation**



## Red-Purple Bypass

**North Main Line  
Clark Street Wall  
Installation**





## Lawrence to Bryn Mawr Modernization



**Hollywood Station  
Platform  
Elevator Installation**



## Lawrence to Bryn Mawr Modernization



## Hollywood Station Granite Flooring Installation



## Lawrence to Bryn Mawr Modernization



## Berwyn Platform Canopy Installation



## Lawrence to Bryn Mawr Modernization



**Argyle Station  
Patching Wall  
Work**

## Lawrence to Bryn Mawr Modernization



**Lawrence Station  
Rebar Work for  
Slab on Grade**




## **Lawrence to Bryn Mawr Modernization**



**Segmental Box  
Girder Staging  
South of  
Lawrence**



# Project Title: RPM Phase One – Design-Build Contract

Community Outreach	Major Activities	Timing
 <p data-bbox="91 816 476 891"><i>CTA staff provided a walking project tour to Edgewater Chamber of Commerce leadership on Oct. 17.</i></p>	<ul data-bbox="525 401 1129 921" style="list-style-type: none"><li>• Weekly Red-Purple Bypass Project updates for 44<sup>th</sup> ward</li><li>• Lawrence to Bryn Mawr project updates for 46<sup>th</sup>, 48<sup>th</sup> wards</li><li>• Meeting with Explore Uptown and Argyle area businesses to talk about Lawrence-Bryn Mawr Under-L Activation programming</li><li>• Edgewater Chamber of Commerce – project update</li><li>• Monthly virtual office hours (October)</li><li>• Lakeview East Chamber of Commerce – project update</li><li>• Edgewater Chamber of Commerce – project tour</li></ul>	<p data-bbox="1165 405 1246 429">Weekly</p> <p data-bbox="1165 492 1269 516">Bi-weekly</p> <p data-bbox="1165 579 1229 603">Oct. 4</p> <p data-bbox="1165 696 1229 720">Oct. 8</p> <p data-bbox="1165 813 1239 837">Oct. 11</p> <p data-bbox="1165 893 1243 917">Oct. 17</p>



# RPM Phase One Design-Build DBE Attainment Through September 30, 2024

## RPM Phase I Design-Build DBE Attainment through September 30, 2024

**119** unique DBE firms

**54** new to CTA



DBEs have been awarded

**\$286,983,779**



Have been paid

**\$182,465,957**

The prime contractor is on-track to meeting their **20%** DBE goal



DBE Awards



DBE Payments





# RPM Phase One Design-Build Workforce Attainment Through September 30, 2024

## RPM Phase I Design-Build Workforce Attainment through September 30, 2024



**2,455**

RPM Phase I has created **2,455** construction trade labor jobs on the design-build team



Labor Hours Worked  
**2,025,088**



**\$120,192,707**  
Wages Earned

### RPM Phase I Workforce Goals

Goals

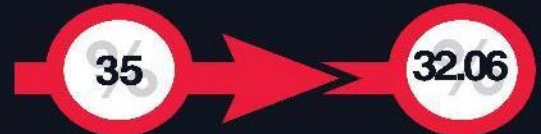
Attainment



Workforce Innovation & Opportunity Act (WIOA)



Apprentice



Economically Disadvantaged Area (EDA)



# September 2024 Outreach Events

- City of Chicago Procurement Summit September 5
- Metropolitan Water Reclamation District (MWRD) Summit September 6
- FH Paschen Meet The Contractor @ Sulzer Library September 9
- Women's Business Development Center (WBDC) Conference September 12
- Q3 Workforce Outreach Event @ Columbus Park Refectory September 12
- Driving Small Businesses The Distance: Cyber Security September 18
- Q3 Outreach Event @ Gately Park September 19
- E Squared Lunch and Learn September 20
- Illinois Office of Faith-Based Community Development @ JLM Center September 23
- Red Line Extension-Meet The Contractor @ Olive-Harvey College September 25
- Tracks To Trades @ Paul Simon Job Corp Campus September 26





# October 2024 Outreach Events

- CTA Small Business Education Series: Professional Services (First Day) October 1
- Illinois Hispanic Chamber of Commerce – Business Expo and Conference October 3
- 2024 Technology Summit (Bush Infotech Group) October 8
- CTA Small Business Education Series: Professional Services (Second Day) October 8
- Citywide Career Fair October 10
- Building Small Businesses Orientation October 10
- CTA Small Business Education Series: Professional Services (Third Day) October 15
- 2024 Chicago Builds Expo October 22
- CTA Small Business Education Series: Professional Services (Graduation) October 22
- 2024 Chicago Builds Expo October 23
- Driving Small Businesses The Distance: CTA Compliance Do's, Don'ts, and Musts October 23
- Red Line Extension Roadshow: Federation of Women Contractors October 24
- Red Line Extension Roadshow: Black Contractors, Owners, and Executives October 24
- Illinois Asian American Civil Engineers Event October 30

