



Construction Project Briefing



October 8, 2025



Today's Presentation

Mega Projects

- Red Line Extension Project – (RLE)
- Red and Purple Modernization Project – (RPM)

Service Reliability & State of Good Repair

- Traction Power Upgrades - Canal Tie House, Barry and Damen Substations
- O'Hare Line – Harlem Station Bus Bridge Reconstruction

All Stations Accessibility Program – (ASAP)

- Lake Line Austin Station Project
- Racine Station ADA & Traction Power Improvement Project

Customer Facing Investments

- Western Brown Line Station Improvements
- Refresh & Renew Project



Project Title: RLE Project Overview

Chicago's most-traveled rail line with millions of rides each year, the Red Line carries over 30% of the CTA's rail customers and is one of a handful of U.S. transit lines that run 24/7. Extending the Red Line to 130th Street provides a long-awaited and much needed connection to jobs, education, and commerce, while also serving as a catalyst for economic development.

Justification of Need:

Priority of Project:	High
Total Project Budget:	\$5.75B
Construction Contract Value:	\$2,941,743,897 Awarded (DBC, Adv Demo WOs, AUR WOs) \$638,623,038 Pending Award
Earned to Date:	11% (of awarded contracts)
Percent Change Orders to Construction Contract:	0%
Percent Time Used:	13% (July 2025)
Funding Source:	FTA New Starts, CTA Bonds, Tax Increment Financing (TIF), Rebuild IL, Congestion Mitigation & Air Quality Improvement Program (CMAQ), Carbon Reduction Program (CRP)
Estimated Start Date/Estimated Length of Project:	2025 - 2030
Designer of Record:	TY Lin
Construction Manager/General Contractor:	Mainline / Yard & Shop Construction Manager – REDefined Southside Partners (RSP) Advance Work Construction Manager – SQN Associates, LLC



Project Title: RLE – Program Overview

Impact on Customers:	RLE provides a new, more direct connection to the Red Line – up to 30 minutes time savings to riders traveling from the future 130th Street station to the Loop and will facilitate easier access to multiple CTA rail lines and bus routes.
Benefit to System:	RLE is an investment that will result in strength and vitality for communities in the RLE area, benefits that will extend to the entire city.
Benefit to Community:	RLE will help Far South Side residents reliably access jobs and opportunities outside their neighborhoods, which includes jobs within communities along the RLE footprint and throughout the region.
Impact on Accessibility:	N/A
Customer Communication Need:	Construction Activity Notices

Comparable Projects:
RPM Phase One



Project Title: RLE – Project Overview



RLE Project Office Opening



Project Title: RLE – Project Overview



RLE Project Office Opening





Project Title: RLE – Project Overview



Community Office



Project Title: RLE – Advance Demolition

Justification of Need:	Demolition Work Orders: Two Complex and Two Ordinary Work Order Contractors bidding to perform building demolition and environmental remediation at 85 parcels to facilitate future RLE Construction.
Priority of Project:	High
Total Project Budget:	Additional support costs as part of RLE \$5.75B project budget
Construction Contract Value:	\$11,845,986 Contracted to Date
Earned to Date:	27% (As of July 2025)
Percent Change Orders to Construction Contract:	0%
Percent Time Used:	39% (July 2025)
DBE:	All Work Orders to date have met or exceeded the DBE goal (30%)
Estimated Start Date/Estimated Length of Project:	NTP: 10/02/2024 Planned Substantial Completion: 09/12/2026
Designer of Record:	Epstein, Altus Works
Construction Manager/General Contractor:	Taza Construction, Foundation Mechanics, John Burns Construction and Kiewit Construction
Detailed Overview of Scope:	Demolish properties needed for RLE ahead of structure and station construction.



Project Title: RLE – Advance Demolition

Impact on Customers:	Periodic flagging activities while poles are being set/removed. Bus reroutes for street closures
Benefit to System:	Provides access to construct the Red Line Extension.
Benefit to Community:	Reduces risk and duration for the RLE Project.
Impact on Accessibility:	None
Customer Communication Need:	Construction Activity Notices will be provided to inform businesses and residents regarding temporary construction impacts (noise, dust, street/alley closures) throughout the advance work.

Comparable Projects:

RPM advance demolition contracts



Project Title: RLE – Advance Demolition

Progress - Update

Phase	Description	Status
Design:	Advance Demolition Packages: Ordinary Work Orders Complex Work Orders	Ongoing Ongoing
Construction:	Advance Demolition: OWO-1: 4 parcels OWO-2: 2 parcels OWO-3: 12 parcels CWO-2: 33 parcels CWO-3: 5 parcels CWO-4: 6 parcels	100% complete as of August 2025 100% complete as of August 2025 100% complete as of August 2025 95% complete as of August 2025 80% complete as of August 2025 15% complete as of August 2025
Closeout:	Closeout activities to start upon achieving 50% completion on work order.	Ongoing



Project Title: RLE



Advance Demolition



Project Title: RLE



Advance Demolition



Project Title: RLE – Design Build Contract

Justification of Need:	Walsh-VINCI Transit Community Partners will design and build the 5.5-mile extension of the Red Line from 95th Street to 130th Street, including four new fully-accessible stations. RLE marks one of the largest investments on the Far South Side in decades and is a critical investment for CTA to expand its rapid transit network.
Priority of Project:	High
Total Project Budget:	\$5.75B
Construction Contract Value:	\$2,926,510,885
Earned to Date:	11% (As of July 2025)
Percent Change Orders to Construction Contract:	0%
Percent Time Used:	13% (July 2025)
DBE:	Design Goal 25% Construction Goal 22%
Funding Sources:	FTA New Starts, CTA Bonds, Tax Increment Financing (TIF), Rebuild, IL, Congestion Mitigation & Air Quality Improvement Program (CMAQ 1), Carbon Reduction Program (CRP)
Estimated Start Date/Estimated Length of Project:	LNTP:10/15/24, NTP 1/13/25 / Construction Start Date: Spring 2026 / Est. Completion 2030
Designer of Record:	Walsh Vinci Transit Community Partners (WVTCP) / Systra-EXP JV
Construction Manager	REDefined Southside Partners (RSP)
Detailed Overview of Scope:	5.5 miles of new track extending the Red Line from 95 th Street to 130 th Street Four new stations – 103 rd Street, 111 th Street, Michigan Avenue and 103 rd Street

Progress

Phase	Description	Status
Design:	<ul style="list-style-type: none"> • Design Progress Meetings • Concept Design Submittals for Stations • Intermediate Designs for Stations • Concept Design Submittals for Interface with UPRR • Intermediate Designs for Interface with UPRR • Discipline Interface Coordination Meetings • Adjacent Contracts Interface Coordination • Task Force Meetings for Disciplines • Utility, Railroad and Third-Party Coordination 	<ul style="list-style-type: none"> Ongoing Reviewed Ongoing Reviewed Ongoing Ongoing Ongoing Ongoing
Pre-construction	<ul style="list-style-type: none"> • Pre-Construction Progress Meetings • Geotechnical Investigations and Field Survey 	<ul style="list-style-type: none"> Ongoing Ongoing



Project Title: RLE



Design Build Contract- Soil Testing



Project Title: RLE



Design Build Contract- Water Utility Identification



RLE Community Outreach



**Chicago Youth Peace Center
Community Event
August 28th**





RLE Community Outreach



***City of Chicago Procurement Symposium:
Maximizing Professional Services Opportunities on RLE***



RLE Community Outreach



RLE Stations Plaza Community Meeting



RLE Highlighted Events

RLE Mobile Office Hours, Altgeld Library	Aug 21
Youth Peace Center (YPC) of Roseland's community event	Aug 28
City of Chicago Procurement Panel: Maximizing prof svcs opportunities on RLE	Sept 4
Workforce Q3 Outreach Event	Sept 12
Stations meeting marketing material distribution at Red Line terminal	Sept 12
Far South CDC Food Truck Festival	Sept 13
Fall Newsletter distribution	Sept 15
RLE Station Plaza Community meetings	Sept 17-30
RLE Inside Track Alert, activity digest distributed via email	Weekly
RLE Construction Activity Notice door-to-door distribution	Ongoing



RLE Program Through August 31, 2025

RLE PROGRAM

Through August 31st, 2025

116

Unique DBE firms

25

Firms new to CTA

Trade Labor
Hours Worked
231,783



Trade Labor
Jobs Created

665

Trade Labor
Wages Earned
\$5,660,490

*Includes Program Manager, Preliminary Engineering, Construction Management, Demolitions, Design-Build, 120th Yard & Shop, and other support contracts



DBEs have been awarded
\$226,641,764



DBEs have been paid
\$44,331,772



DBE Attainment
12.39%



DBE Commitment
34.47%



RLE Design-Build (Design) Through August 31, 2025

Through August 31st, 2025

22

Unique DBE firms

7

Firms new to CTA



Total Design Jobs Created

548

Design Hours Worked

170,933

EDA



Attainment

3.30%

Goal

10%

RLE Design-Build (Design)



DBE Goal

25%



DBEs have been awarded

\$35,800,096



DBE Awards %

25.00%



DBEs have been paid

\$1,120,981



DBE Attainment

4.86%



Highlighted Events

Exhibit at the 2025 City of Chicago Procurement Symposium

Date: September 4, 2025



300

Attendees

Presenters spoke on the RLE project and professional service opportunities on the project to connect public agencies with innovative vendors and foster meaningful partnerships.





Highlighted Events

Q3 Workforce Outreach Event

Date: September 12, 2025



140

Attendees

22

Firms Attended

Over 140 attendees networked with prime contractors, Union locals, and CTA Workforce partner's: Chicago Women in Trade, Higher 360, Metropolitan Family Services, Revolution Workshop.





September 2025 Outreach Events

2025 City of Chicago Procurement Symposium	September 4, 2025	Black Contractors, Owners and Executives Networking Event	September 18, 2025
Illinois State Black Chamber of Commerce Business Conference	September 9, 2025	RLE Community Meetings	September 23, 2025
Q3 Workforce Outreach Event	September 12, 2025	Citywide Career Fair	September 24, 2025
RLE (Red Line Extension) Community Meetings	September 16, 2025	RLE Community Meetings	September 24, 2025
CTA Budget Townhall Meeting	September 16, 2025	CHA (Chicago Housing Authority) Resident Business Owner Resource Fair	September 24, 2025
RLE Community Meetings	September 17, 2025	HACIA (Hispanic American Construction Industry Association) Transportation Panel Event	September 24, 2025
RLE Zoom Meet The contractors	September 17, 2025	CTA Budget Townhall Meeting	September 25, 2025
		RLE Community Meetings	September 30, 1935



Project Title: RPM Phase One – Design-Build Contract

Justification of Need:	The RPM Phase One Project is greatly needed in order to expand capacity on CTA's most utilized rail line and to replace aging infrastructure.	
Priority of Project:	High	
Total Project Budget:	\$ 2.1 Billion (excludes Transit TIF interest payments)	
Construction Contract Value:	Original - \$1,272,275,929 Current - \$1,421,783,997 (through Change Order 9)	
Earned to Date:	92.46%	
Percent Change Orders to Construction Contract:	11.8%	
Percent Time Used:	84.2%	
DBE:	Design: Goal: 20% / Commitment: 20.64% Construction Goal: 20% / Commitment: 20% Workforce Goals: 10% WIOA / 15% Apprentice / 35% EDA	Contractor is on track to meet the DBE goal
Funding Source:	CTA Financing, FTA Core Capacity Grant, CMAQ, TIFs	
NTP / Construction Start / Estimated Completion:	February 8, 2019 / October 2019 / December 2026	
Design-Build Contractor:	Walsh-Fluor Design-Build Team	
Owners Representative:	Elevated Solutions Partners	

Detailed Overview of Scope: RPM Phase One consists of the following elements that will allow CTA to expand service along the Red and Purple lines:

- Lawrence to Bryn Mawr Modernization (LBMM) – complete reconstruction and addition of ADA accessibility at four Red Line stations (Lawrence, Argyle, Berwyn, and Bryn Mawr) and reconstruction of 6 miles of track, structures, and viaducts from Leland Ave. to Ardmore Ave.
- Red-Purple Bypass (RPB) - Construction of a grade-separated bypass for the Brown Line at Clark Junction, just north of Belmont Ave. Includes realignment and reconstruction of 1.4 miles of mainline tracks and structure between Belmont station and south of Cornelia Ave.
- Corridor Signal Improvements (CSI) – Installation of new higher-capacity signal system on 23 miles of track between Belmont and Howard stations.



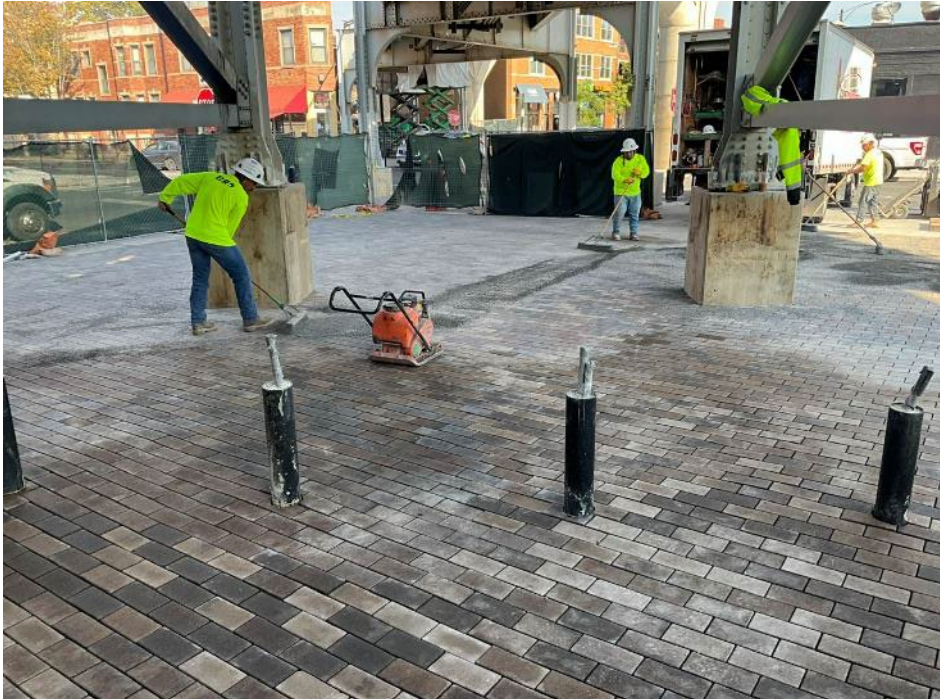
Red-Purple Bypass



**Topcoat
Painting NML
Superstructure**



Red-Purple Bypass

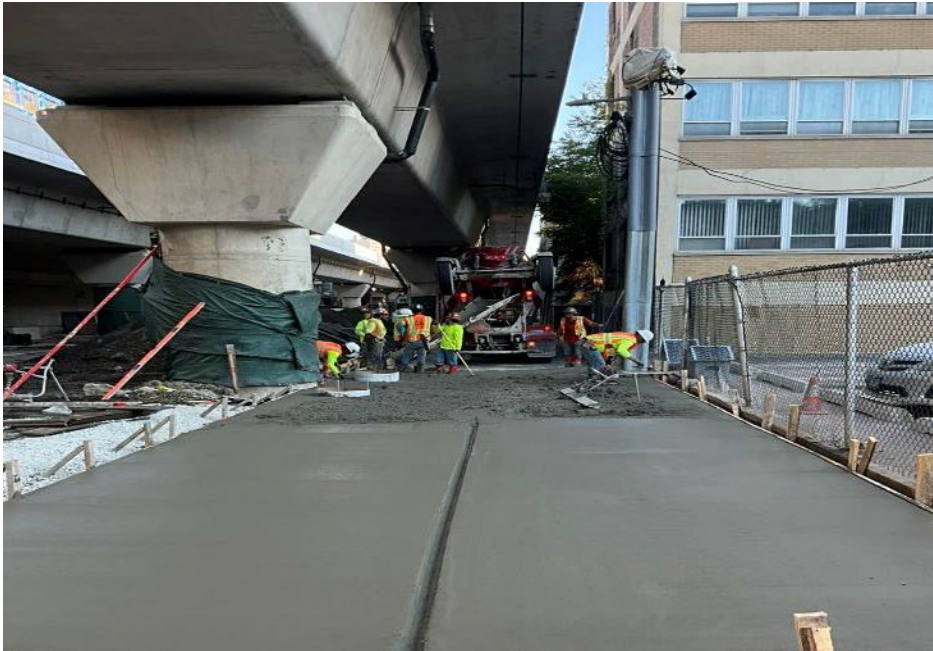


**Paver
Installation
at Roscoe
and
Sheffield**



Project Title: RPM Phase One – Design-Build Contract

Lawrence to Bryn Mawr Modernization



East Alley Restoration



Lawrence to Bryn Mawr Modernization



**Welding and
Ground Rail
Joints Work**



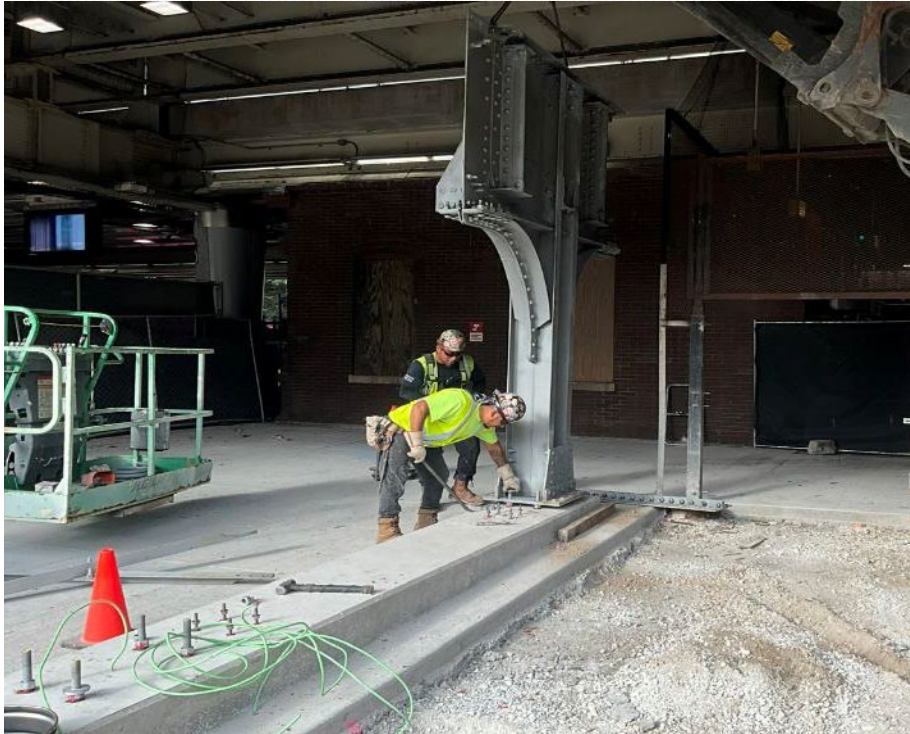
Lawrence to Bryn Mawr Modernization



**Subgrade
Alley Work**




Project Title: RPM Phase One – Design-Build Contract



Belmont Historic Bent Installation



Project Title: RPM Phase One – Design-Build Contract

Community Outreach	Major Activities	Timing
	<ul style="list-style-type: none">• Weekly Red-Purple Bypass Project updates for 44th ward• Lawrence to Bryn Mawr project updates for 46th, 48th wards• Argyle Night Markets• Uptown Live – new, end-of-summer music festival	<p>Weekly</p> <p>Bi-weekly</p> <p>Aug. 28</p> <p>Sept. 20-21</p>



RPM Phase One Design-Build DBE Attainment Through August 31, 2025

123

unique DBE firms

56

new to CTA



DBEs have been awarded

\$293,395,246



Have been paid

\$269,435,063

The prime contractor is on-track to meeting their 20% DBE goal

20%

DBE Awards

20.64%

DBE Payments

21.59%



RPM Phase One Design-Build Workforce Attainment Through August 31, 2025



2,926

RPM Phase I has created **2,926** construction trade labor jobs on the design-build team



Labor Hours Worked
2,680,157



\$161,204,169
Wages Earned

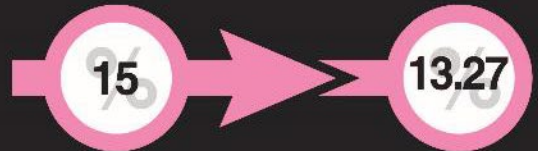
RPM Phase I Workforce Goals

Goals

Attainment



Workforce Innovation & Opportunity Act (WIOA)



Apprenticeship



Economically Disadvantaged Area (EDA)



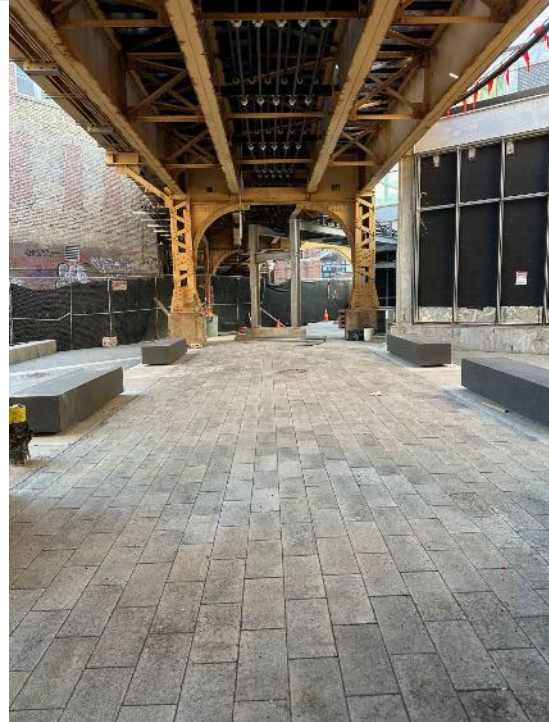
Project Title: Traction Power Upgrades – Canal Tie House, Barry and Damen Substations

Construction Progress

Phase	Description	Status
Haymarket Substation	<ul style="list-style-type: none">• Punchlist work	Ongoing
Canal Tie-House	<ul style="list-style-type: none">• Commission Tie-House• Interior Tie-House Build-Out• Cable connections to Tie-House• Punchlist work	Complete Complete Complete Ongoing
Damen Substation	<ul style="list-style-type: none">• Build building interior, flooring, rooms and finishes• Damen Exterior and Plaza installation	Complete Ongoing
Barry Substation	<ul style="list-style-type: none">• Installing substation Traction Power Equipment.• Build exterior walls and roof.• Build building interior, flooring, rooms and finishes• Testing and Commissioning of Traction Power Equipment	Ongoing Ongoing Ongoing Ongoing
Belmont Crossover	<ul style="list-style-type: none">• Punchlist work.	Ongoing



Project Title: Traction Power Upgrades – Canal Tie House, Barry and Damen Substations



Damen Plaza Paver and Bench Installation



Project Title: Traction Power Upgrades – Canal Tie House, Barry and Damen Substations



Barry Subway Cable Landing



Barry Cable Installation



Project Title: O'Hare Line – Harlem Station Bus Bridge Improvements

Construction Progress

Phase	Description	Status
Construction	• Painting Canopy Steel	Completed
	• Bus Canopy Comm and Electric	Fall 2025
	• Install Bridge Conduit	Fall 2025
	• Bridge Abutment Repairs	Fall 2025
	• Directional Bore for Water and Sewer	Fall 2025
	• Install Bus Shelters	Fall 2025
	• Concrete/Asphalt Paving	Fall 2025
	• Reopen Bridge	Fall 2025



Project Title: O'Hare Line – Harlem Station Bus Bridge Reconstruction



Installing Overspray Protection on Bus Canopy



Project Title: O'Hare Line – Harlem Station Bus Bridge Reconstruction



Trench for new water service at Washroom



Project Title: O'Hare Line – Harlem Station Bus Bridge Reconstruction

Impact on Customers:	Minor changes in bus service and Park & Ride access for those who use the Harlem Blue Line Station on the O'Hare Branch. Rail service will not be impacted.
Benefit to System:	New bridge superstructure and interface between bridge and station, new concrete approaches, bridge deck, ADA-compliant curbs and sidewalks, new canopy on bridge. New bus operator bathroom facility, painting, improved drainage.
Benefit to Community:	Replacement of the bridge before it becomes unsafe will help ensure continuity of service on bus routes out of the O'Hare Line Harlem Station.
Impact on Accessibility:	New ADA-compliant curbs and sidewalks for improved accessibility.
Customer Communication Need:	Construction Activity Notices, coordination with Alderman, press releases.

Comparable Projects:

Montrose Bridge Replacement (IDOT).



Project Title: All Stations Accessibility Program

Funded Program Progress

Phase	Description	Status
Construction	Funded Station Projects	
	Lawrence (Red Line)	Completed
	Argyle (Red Line)	Completed
	Berwyn (Red Line)	Completed
	Bryn Mawr (Red Line)	Completed
	Racine (Blue Line)	On-going
	Austin (Green Line)	On-going
State/Lake (Loop)	Beginning	
Design	Funded Design Projects	
	California (Blue Line)	Complete
	Montrose (Blue Line)	On-going
	16 Elevator Rehabs	On-going
	Belmont (Blue Line)	Beginning
	Irving Park (Blue Line)	Beginning
	Pulaski (Blue Line)	Planning/Environmental
	Oak Park (Green Line)	Planning/Environmental
Ridgeland (Green Line)	Planning/Environmental	



Project Title: All Stations Accessibility Program – Lake Line Austin Station

Construction Progress

Phase	Description	Status
Construction	• Elevator micropile drilling and installation	Completed
	• CTA Communications fiber rewiring at elevator location	Completed
	• Abandoned water service removal	Completed
	• New underground sewer and electrical utilities installation	Ongoing
	• Austin / Corcoran traffic signal improvements	Ongoing
	• Earth Retention System (ERS) excavation and installation	In Progress
	• Electrical demolition at elevator location	In Progress
	• Retaining wall structural bracing fabrication and installation	In Progress



Project Title: All Stations Accessibility Program – Lake Line Austin Station



Micropile Drilling at Austin Stationhouse Elevator Location



Project Title: All Stations Accessibility Program – Lake Line Austin Station



Micropiles Installed at Austin Stationhouse Elevator Location



Austin / Corcoran Traffic Signal Foundation Installation



Earth Retention System (ERS) Excavation and Installation



Project Title: Racine Station ADA & Traction Power Improvement Project



Racine Stationhouse & Stairway Looking North



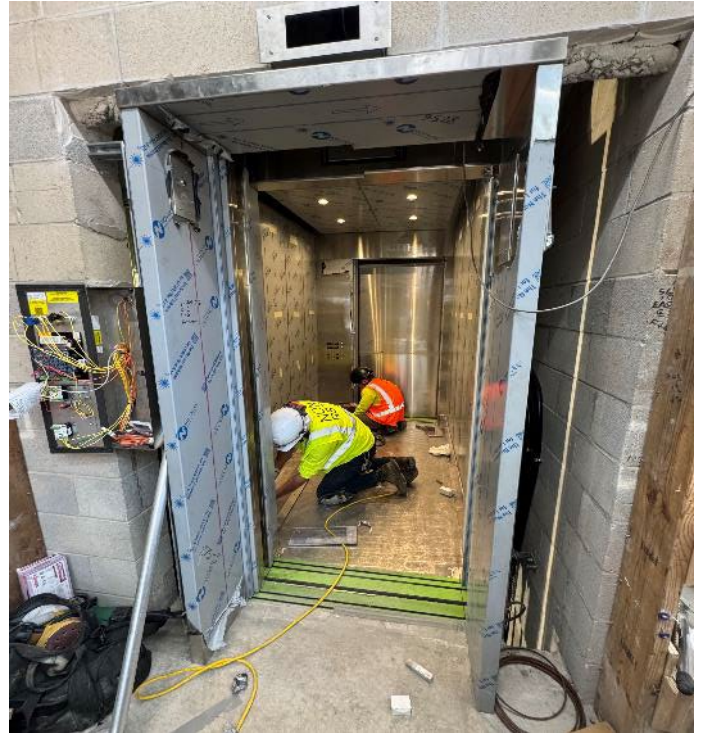
Project Title: Racine Station ADA & Traction Power Improvement Project



Racine Stationhouse CAK & Signage Panels



Project Title: Racine Station ADA & Traction Power Improvement Project



Racine Elevator Installation



Project Title: Racine Station ADA & Traction Power Improvement Project



Racine Platform Canopy Roof Panels



Project Title: Racine Station ADA & Traction Power Improvement Project



Loomis Sanitary Receiving Pit ERS Installation



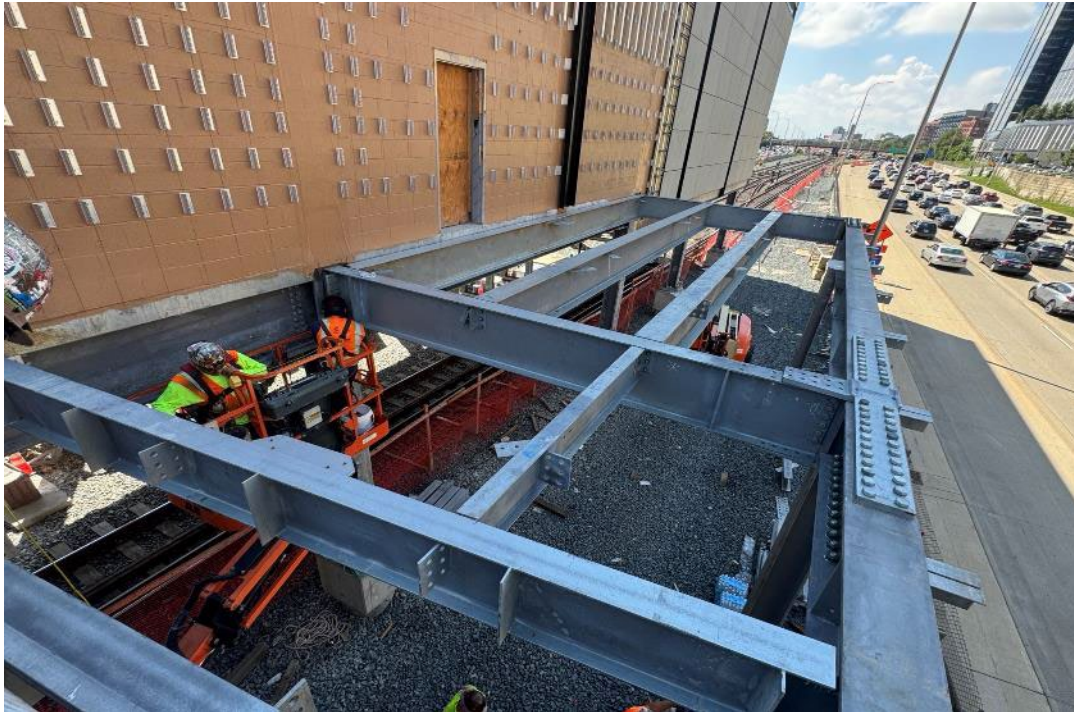
Project Title: Racine Station ADA & Traction Power Improvement Project



Morgan Substation Louvers – South Wall



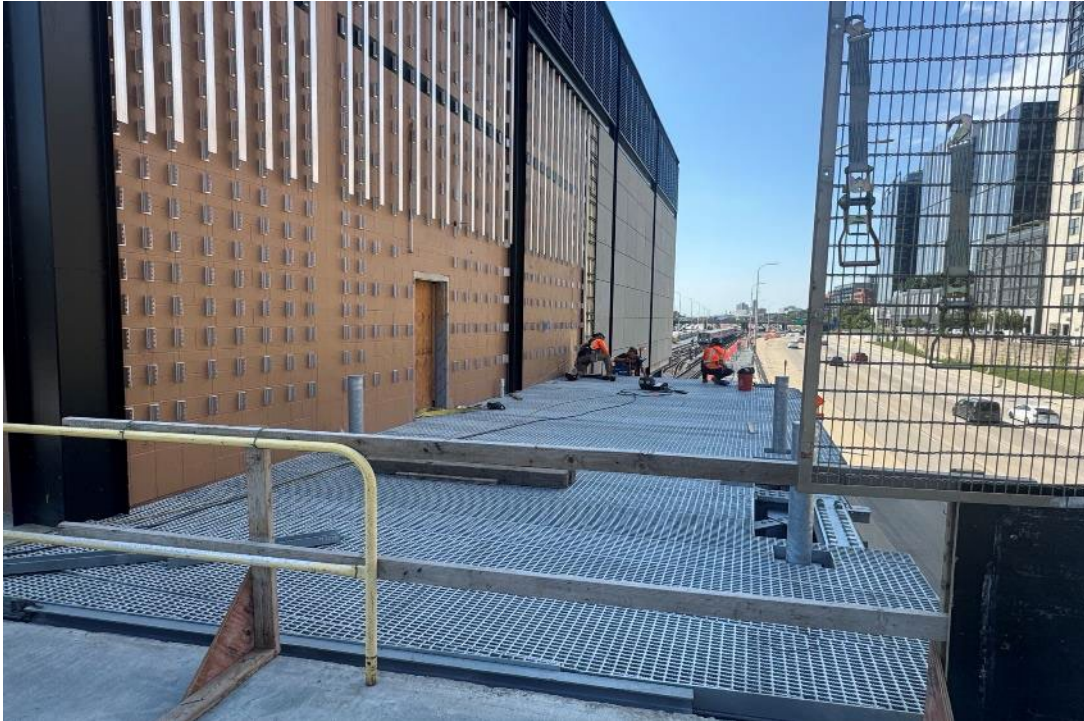
Project Title: Racine Station ADA & Traction Power Improvement Project



Morgan Substation Parking Dock Structural Steel



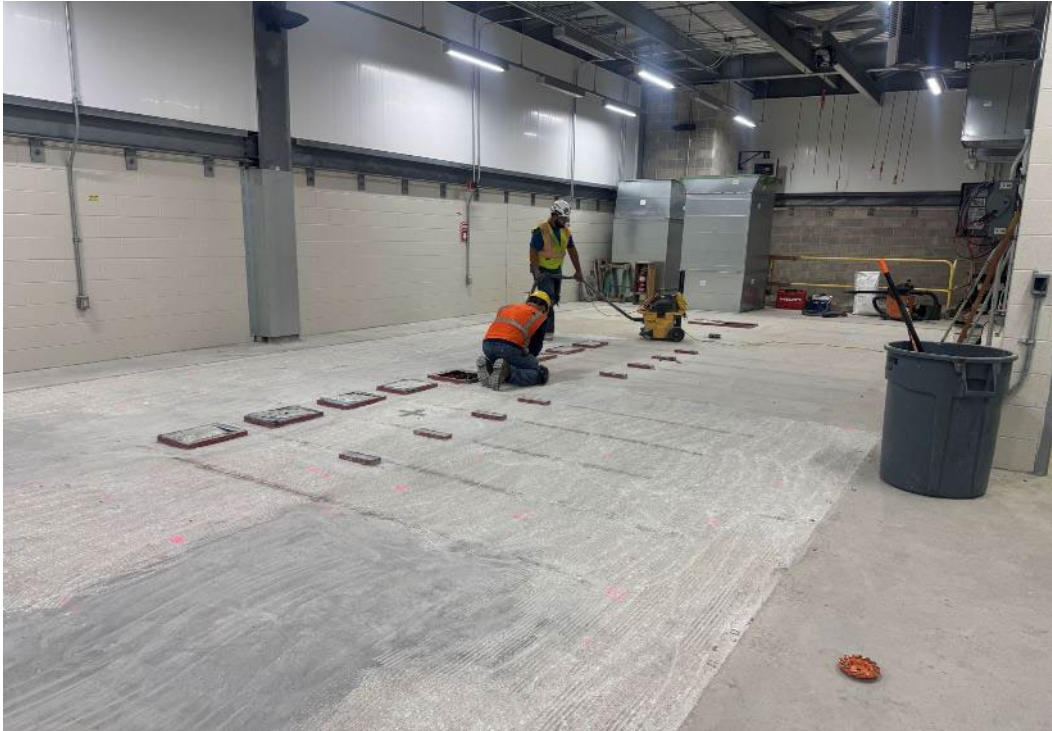
Project Title: Racine Station ADA & Traction Power Improvement Project



Morgan Substation Parking Dock Grating



Project Title: Racine Station ADA & Traction Power Improvement Project



Morgan Substation Dialectic Flooring Prep



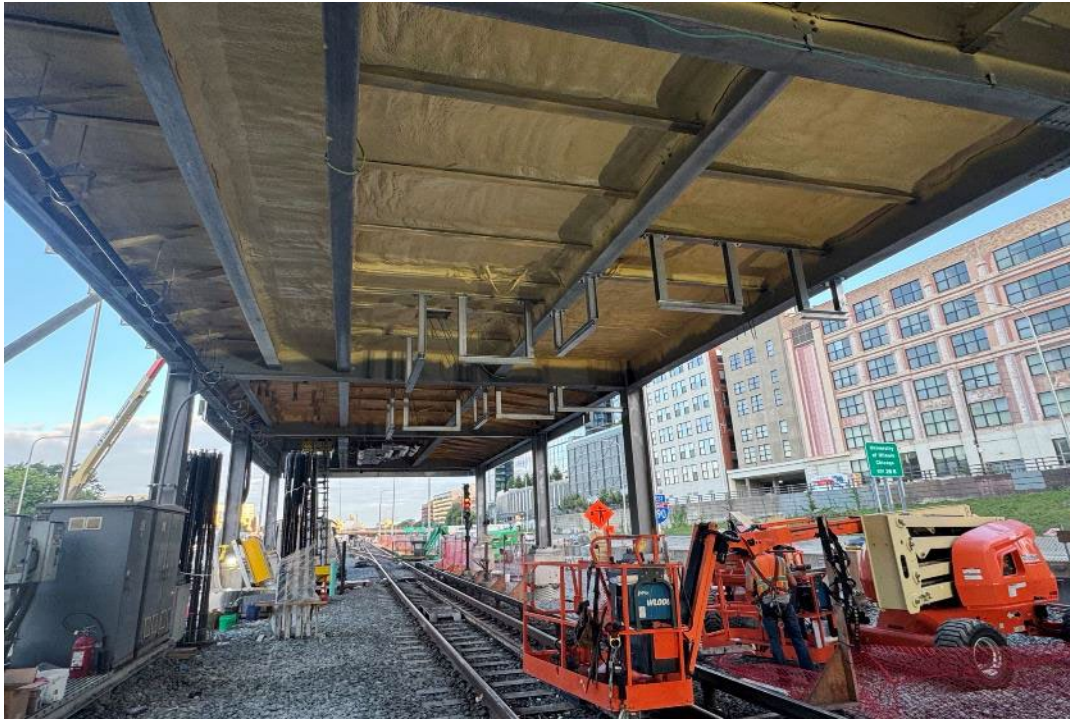
Project Title: Racine Station ADA & Traction Power Improvement Project



Morgan Substation HVAC Intake Insulation



Project Title: Racine Station ADA & Traction Power Improvement Project



Morgan Substation Suspended Duck Bank Hangers



Project Title: Western Brown Line Station Improvements

Construction Progress

Phase	Description	Status
Construction	Stage 2 Construction	
	Demolish and Haul Off Bus Canopy	Completed
	Demo/Install New Masonry (above 1 st floor)	On-going
	Demo Bus Turnaround Pavement	On-going
	Reconstruct Bus Driver Washroom	On-going
	Resurface Station Floor (54 hr. closures)	October/November
	Replace North Elevator	October thru December
	Replace South Elevator	December thru February
	Glazing/Storefront Replacement (ground floor)	Q4 2025
	Station House Ceiling Replacement	Q4 2025
Upgrade Station Electric Service	Q4 2025	
Lighting Replacement and Installation	Jan to March 2026	



Project Title: Western Brown Line Station Improvements



Masonry Demolition North Wall



Project Title: Western Brown Line Station Improvements



Masonry Demolition North Wall



Project Title: Western Brown Line Station Improvements



**Masons Replacing Face
Brick on Exterior Wall**



Project Title: Western Brown Line Station Improvements



Bus Canopy Foundation Demolition



Project Title: Refreshed & Renewed

Justification of Need:

The Refreshed & Renewed Program is a CTA Facilities Maintenance implemented plan to promote safety, security and longevity to all CTA Facilities including, but not limited to: Rail Stations and Platforms, Bus Garages and Rail Shops across the system. The Refreshed & Renewed Program performs major improvement work at these transit operations facilities for both the customer and the internal needs of the Authority.

Priority of Project:	Medium
Total Project Budget:	\$6,500,000
Expended to Date:	\$1,669,366
Used last Month:	\$179,898
Funding Source:	Various
Estimated Start Date/Estimated Length of Project:	January 2021 to December 31, 2025
Contractor	CTA Forces

28 Rail Stations and 14 Bus-turn-arounds will receive lighting upgrades, painting and deep cleaning as part of this program for the current year.

28 Stations and 14 Bus-turn-arounds will have a detailed Scope of work which includes:

- Maintaining Cleanliness throughout public, as well as back-of-house areas
- Ensuring stations are graffiti free;
- Re-painting painted surfaces;
- Maintaining pathways of ingress and egress are clear of obstruction;
- LED lighting conversions and component;
- Removing obstructions from windows and store front systems that may impede natural light and safe viewing points.
- Address and repair any unsafe defects such as spalling concrete and rotted wooden platforms;
- Replacing outdated and damaged signage;
- Maintaining a warm/cool working environment.



Project Title: Refresh & Renew

Department	Description	Status
Facility Maintenance	<p><u>Rail Stations Full Program Scope 28 Stations (20 of 28 Completed)</u></p> <ul style="list-style-type: none">• Halsted-Green• Noyes-Purple• Harrison-Red• 43rd-Green• Kedzie-Orange• 95th-Red <p><u>Bus Turnaround Full Program (9 of 14 Completed)</u></p> <ul style="list-style-type: none">• Congress/Financial Pl• Pulaski/104th• Division/Austin• Belmont/Halsted• Wilson/Ravenswood• Clark/Arthur	<p>Completed On-Going Completed On-Going On-Going Scheduled</p> <p>Completed Completed Completed On-Going Scheduled Scheduled</p>

Delay Explanation:

N/A



Project Title: Refresh & Renew

Before

After



**Noyes Purple Line – Staircase Roofing Repairs
(Ongoing)**



Project Title: Refresh & Renew

Before



After



Noyes Purple Line – Staircase Roof Repair (Ongoing)



Project Title: Refresh & Renew

Before



After

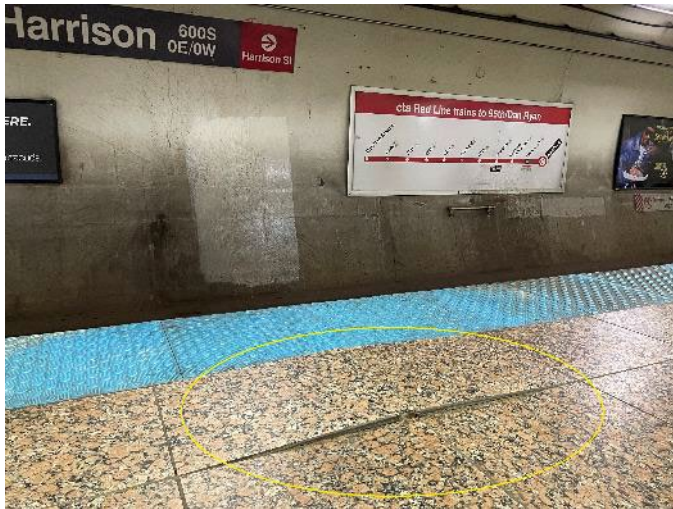


Noyes Purple Line – Staircase Structure Repair



Project Title: Refresh & Renew

Before



After



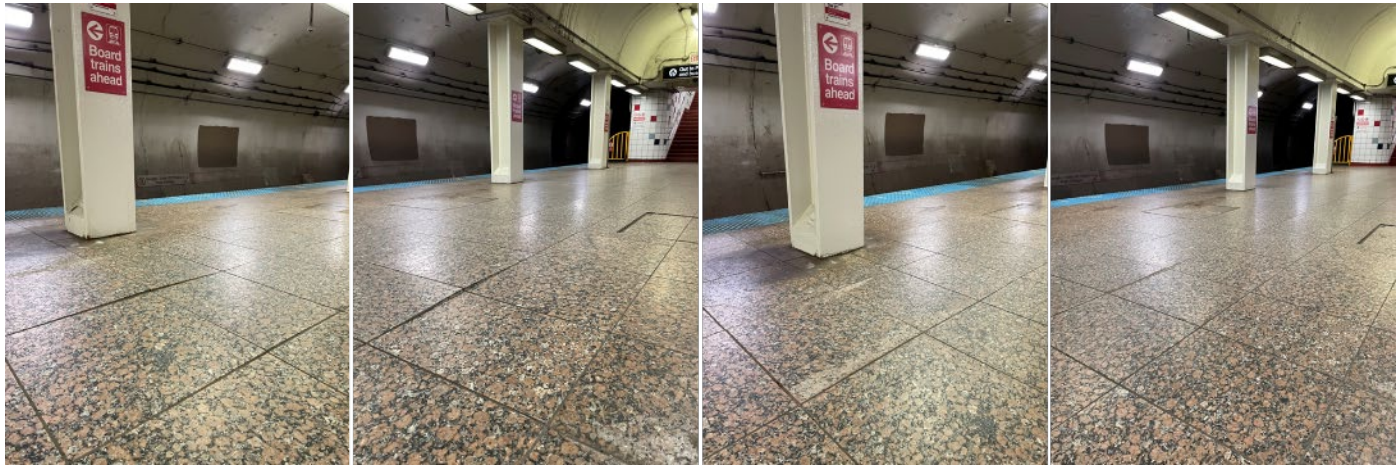
Harrison Red Line – Platform Tile Repair



Project Title: Refresh & Renew

Before

After

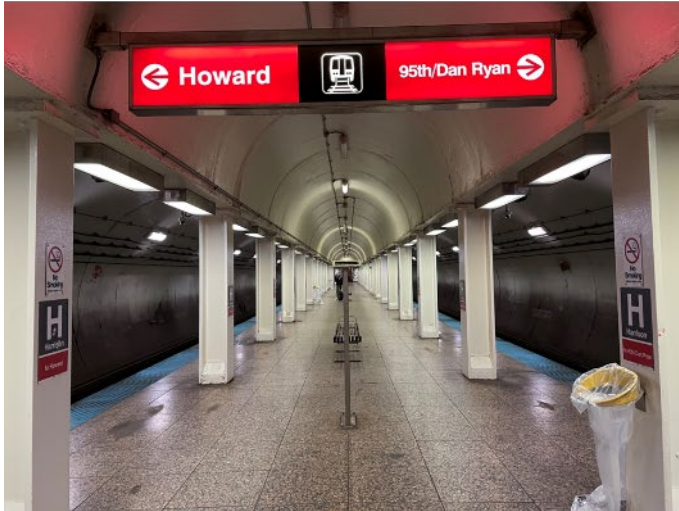


Harrison Red Line – Platform Tile Repair



Project Title: Refresh & Renew

Before



After



Harrison Red Line – Painting & Lighting Upgrades



Project Title: Refresh & Renew

Before



After



Harrison Red Line – Painting & Lighting Upgrades

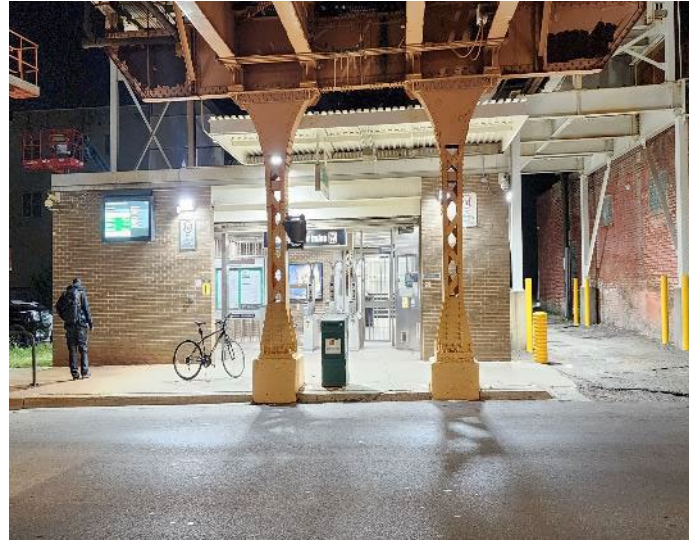


Project Title: Refresh & Renew

Before



After



43rd Green Line – LED Lighting Upgrades



Project Title: Refresh & Renew

Before



After



43rd Green Line – Structure & Lighting Improvements



Project Title: Refresh & Renew

Before

After



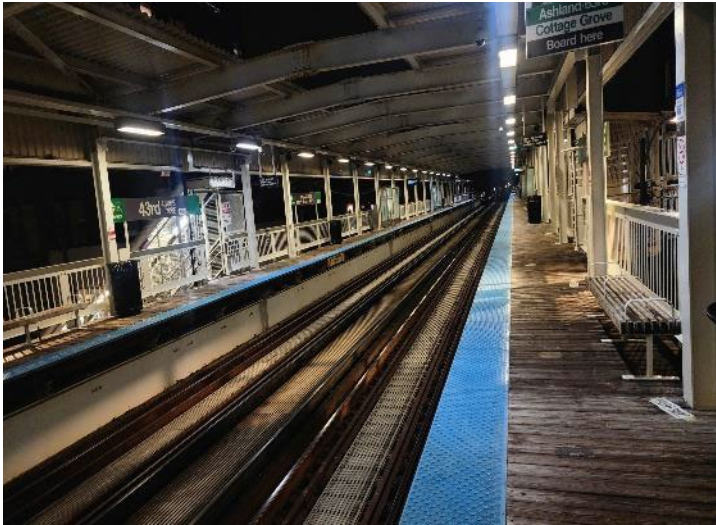
43rd Green Line – Electrical Repairs



Project Title: Refresh & Renew

Before

After



43rd Green Line – Lighting Upgrades