

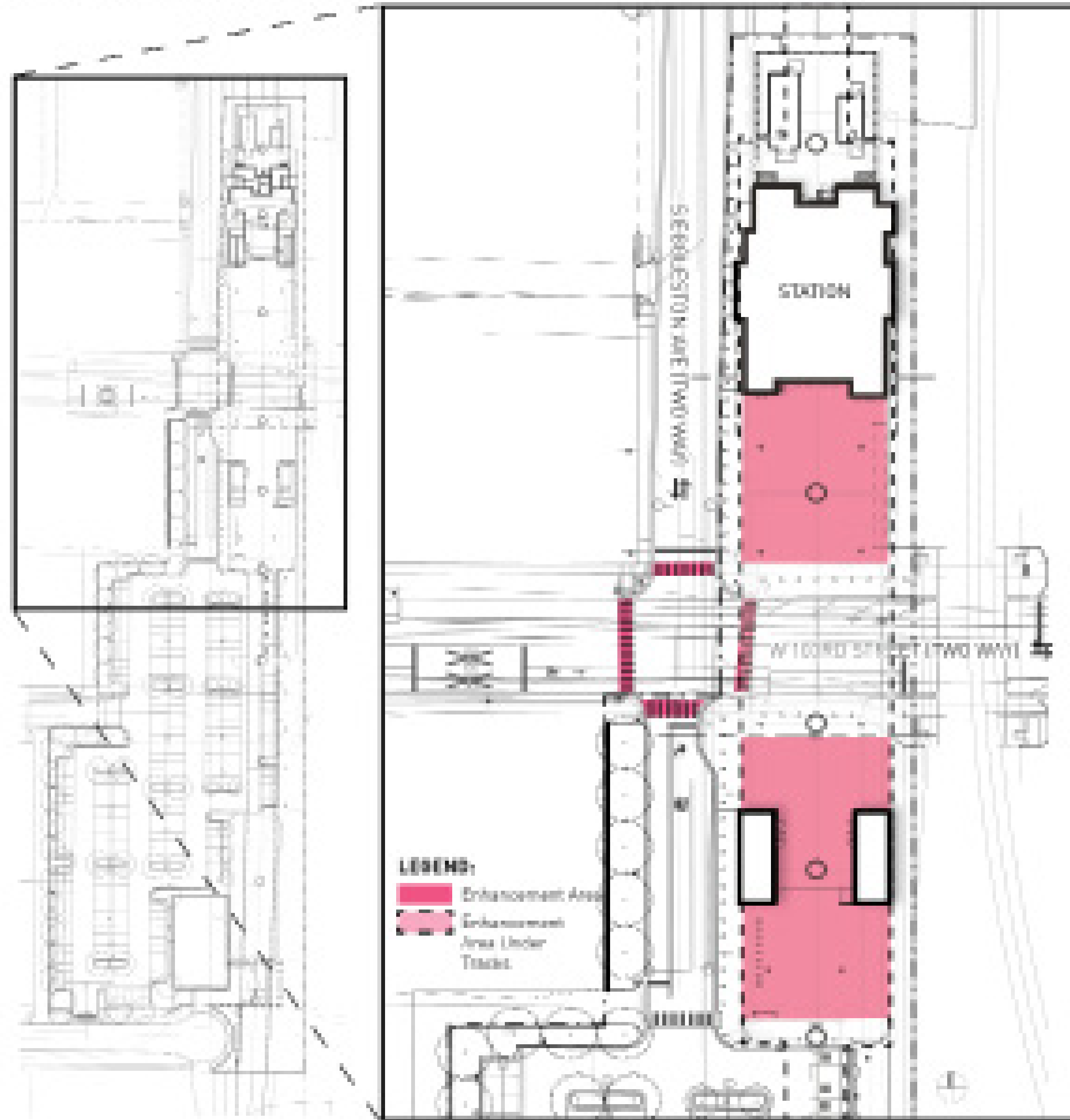
● 103rd Street Station

Estación Calle 103



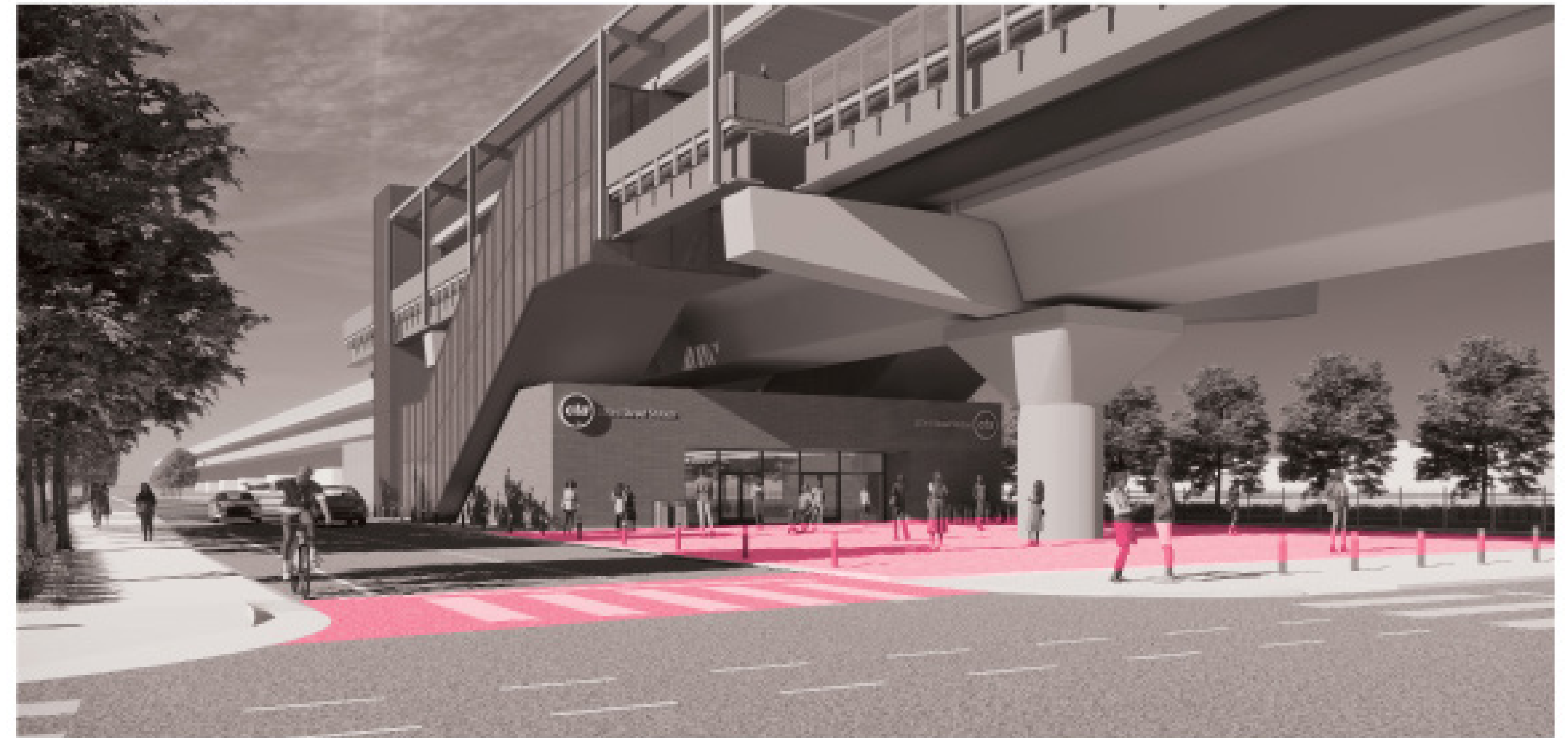
103rd Street Station – Estación Calle 103

W 103RD STREET
ENHANCEMENT AREAS



PLAN ENLARGEMENT

W 103RD STREET
ENHANCEMENT AREAS



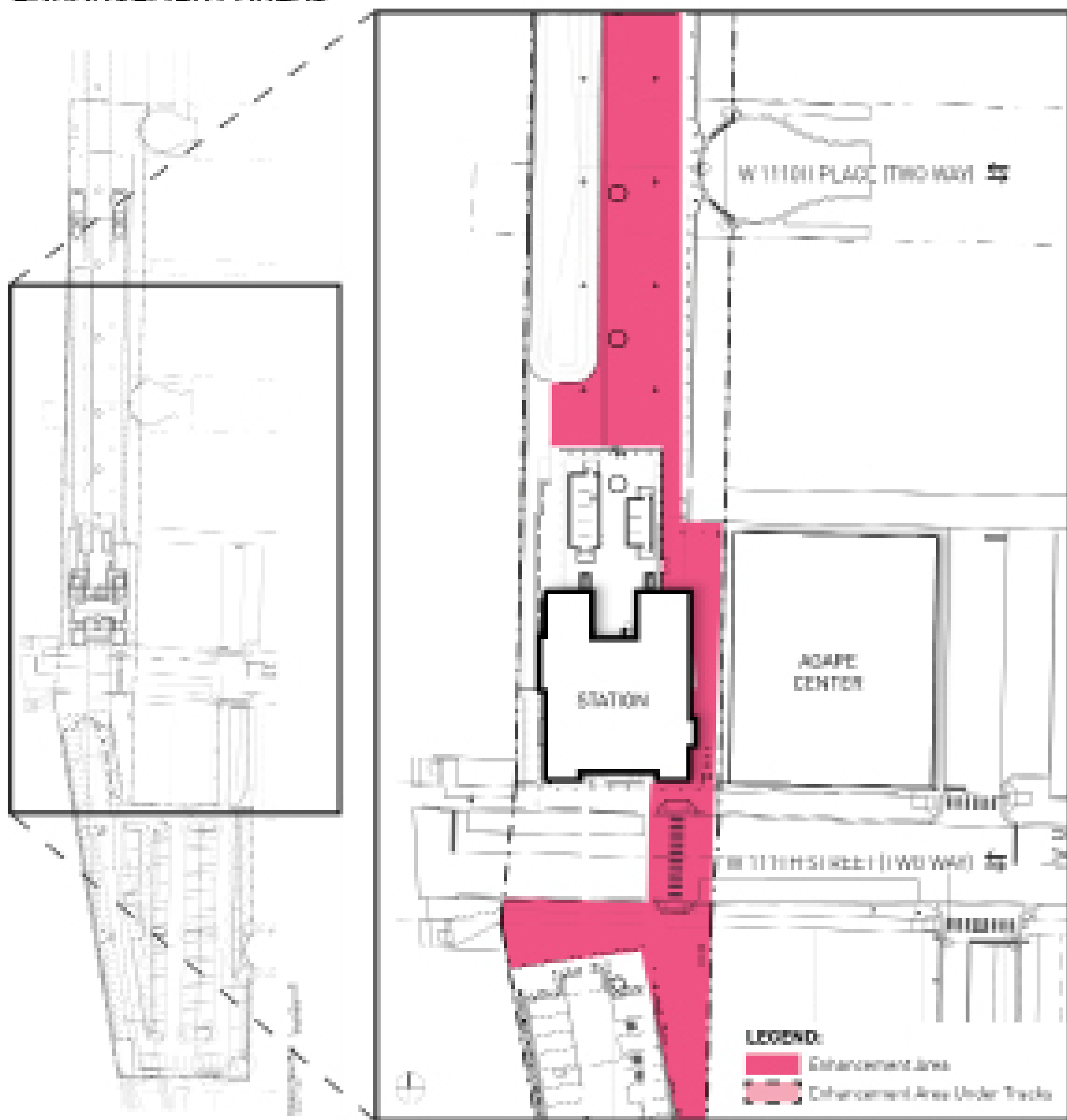
● 111th Street Station

Estación Calle 111



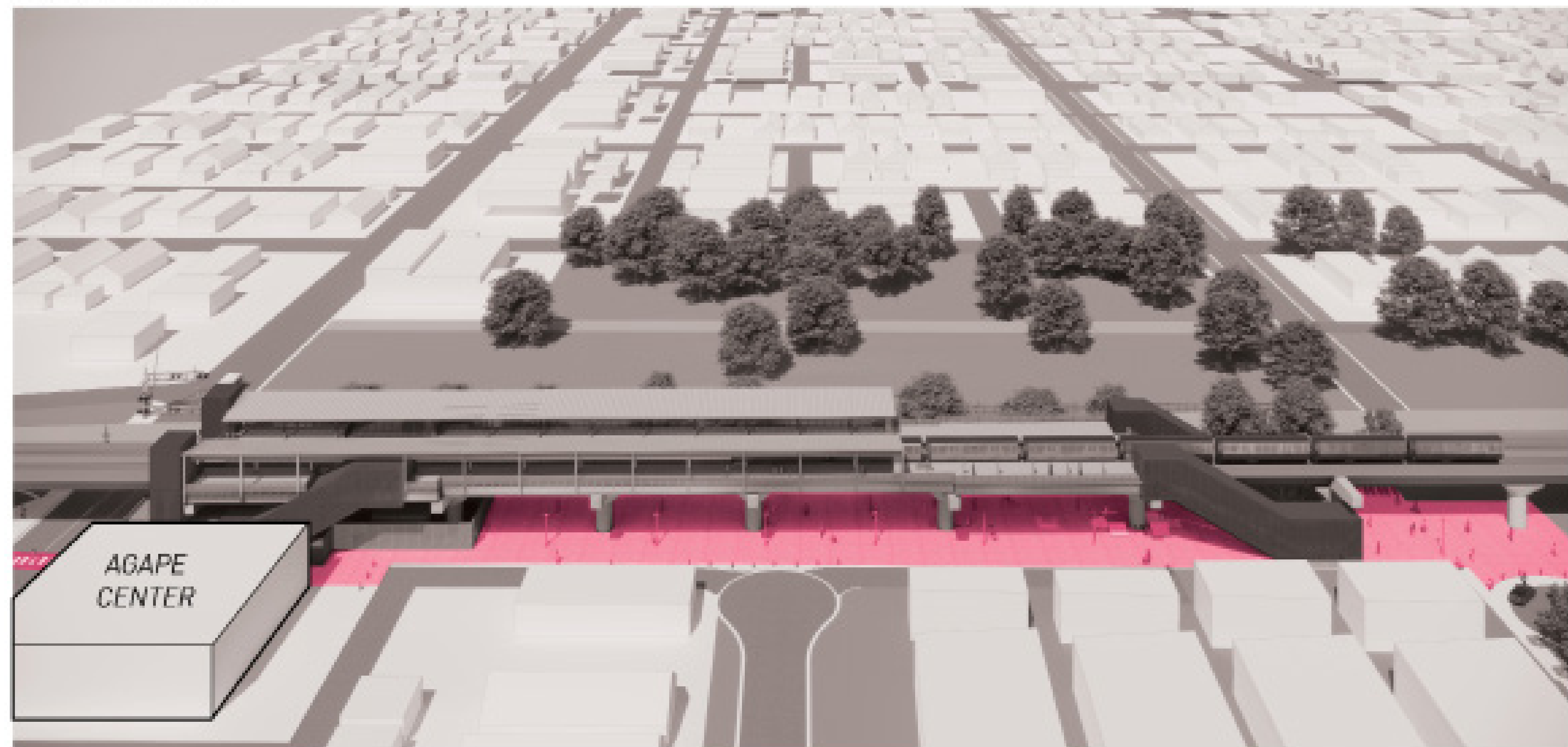
11th Street Station - Estación Calle 111

W 111TH STREET
ENHANCEMENT AREAS



PLAN ENLARGEMENT

W 111TH STREET
ENHANCEMENT AREAS



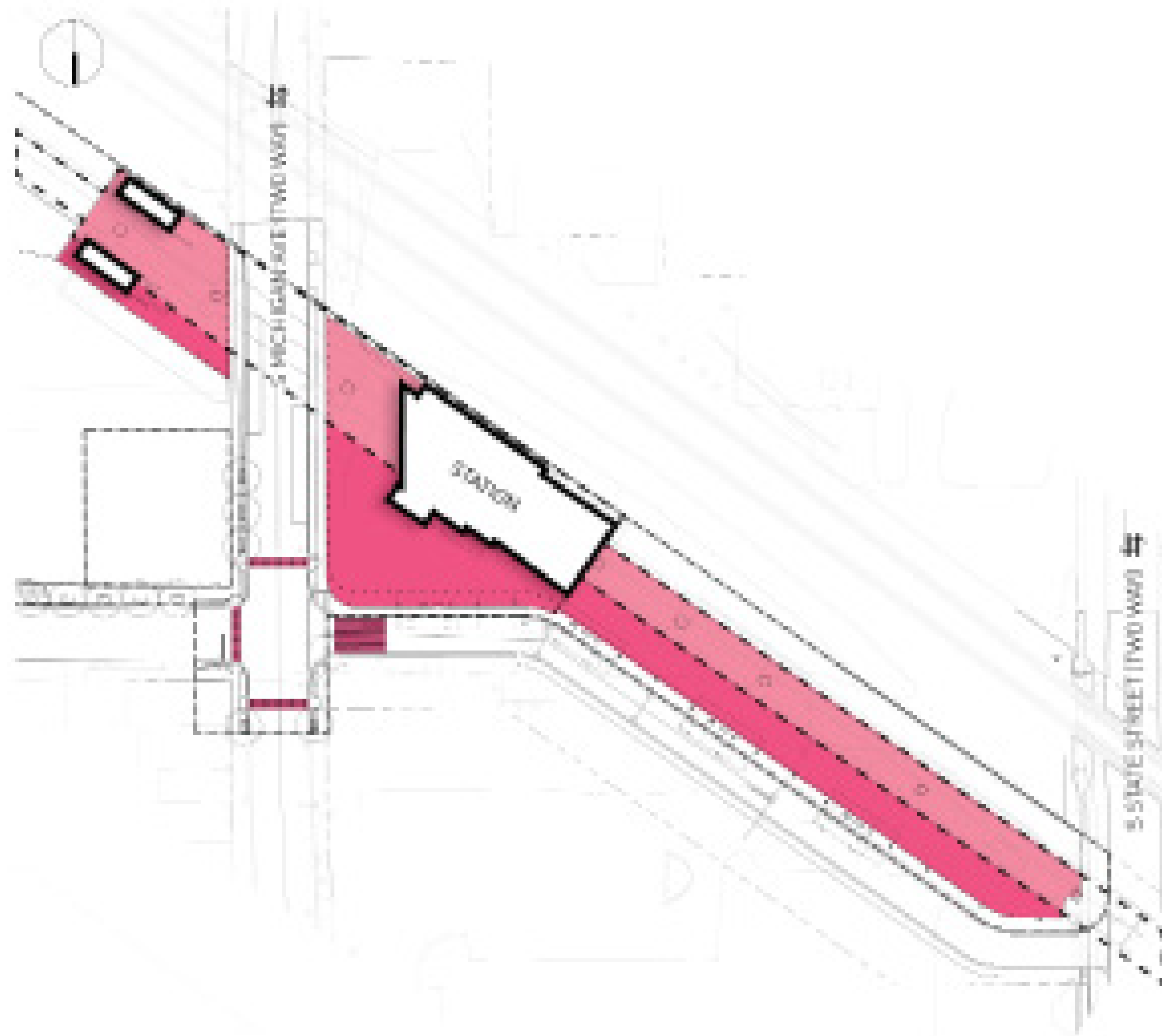
● Michigan Avenue Station

Estación Calle Michigan



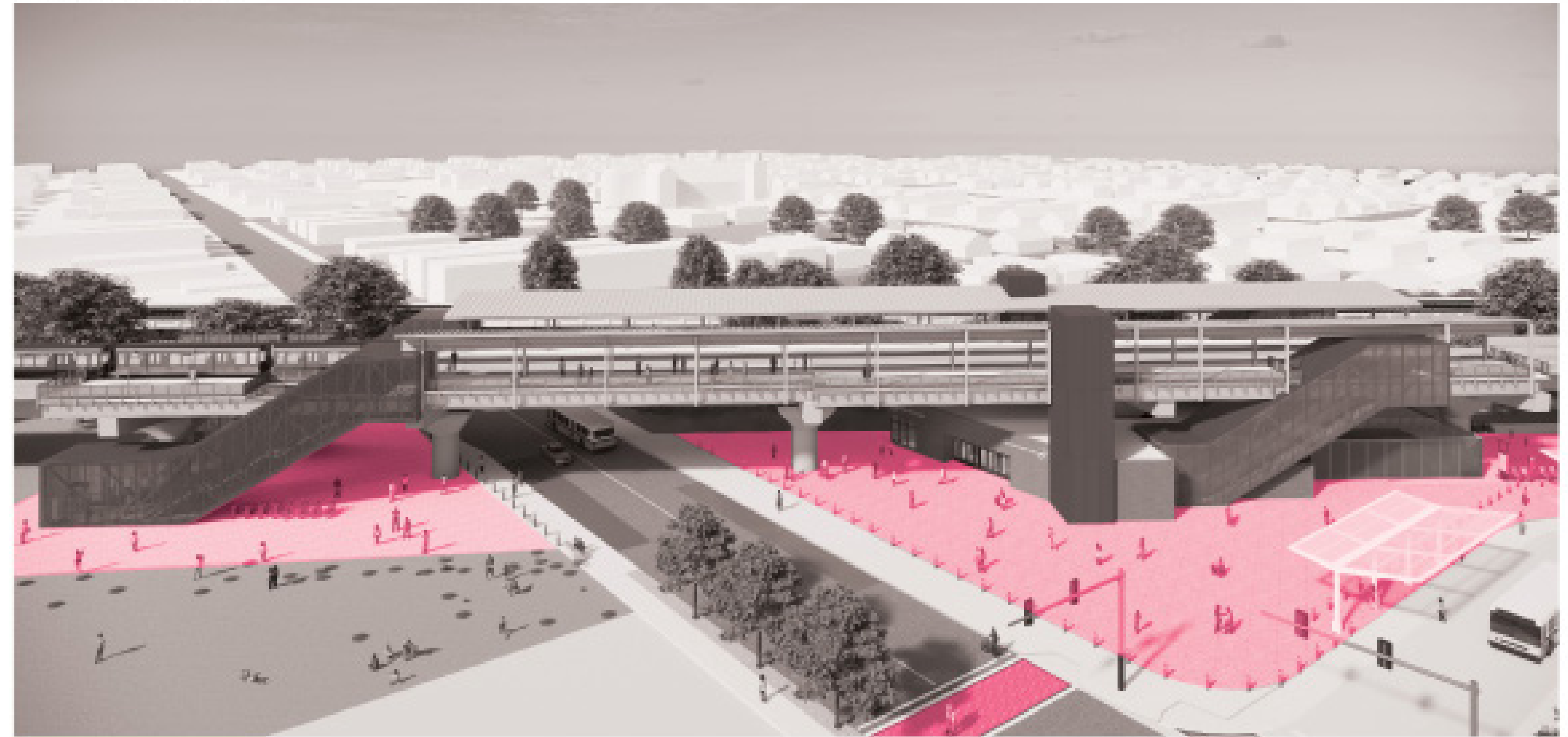
● Michigan Avenue Station – Estación Calle Michigan

S MICHIGAN AVENUE ENHANCEMENT AREAS



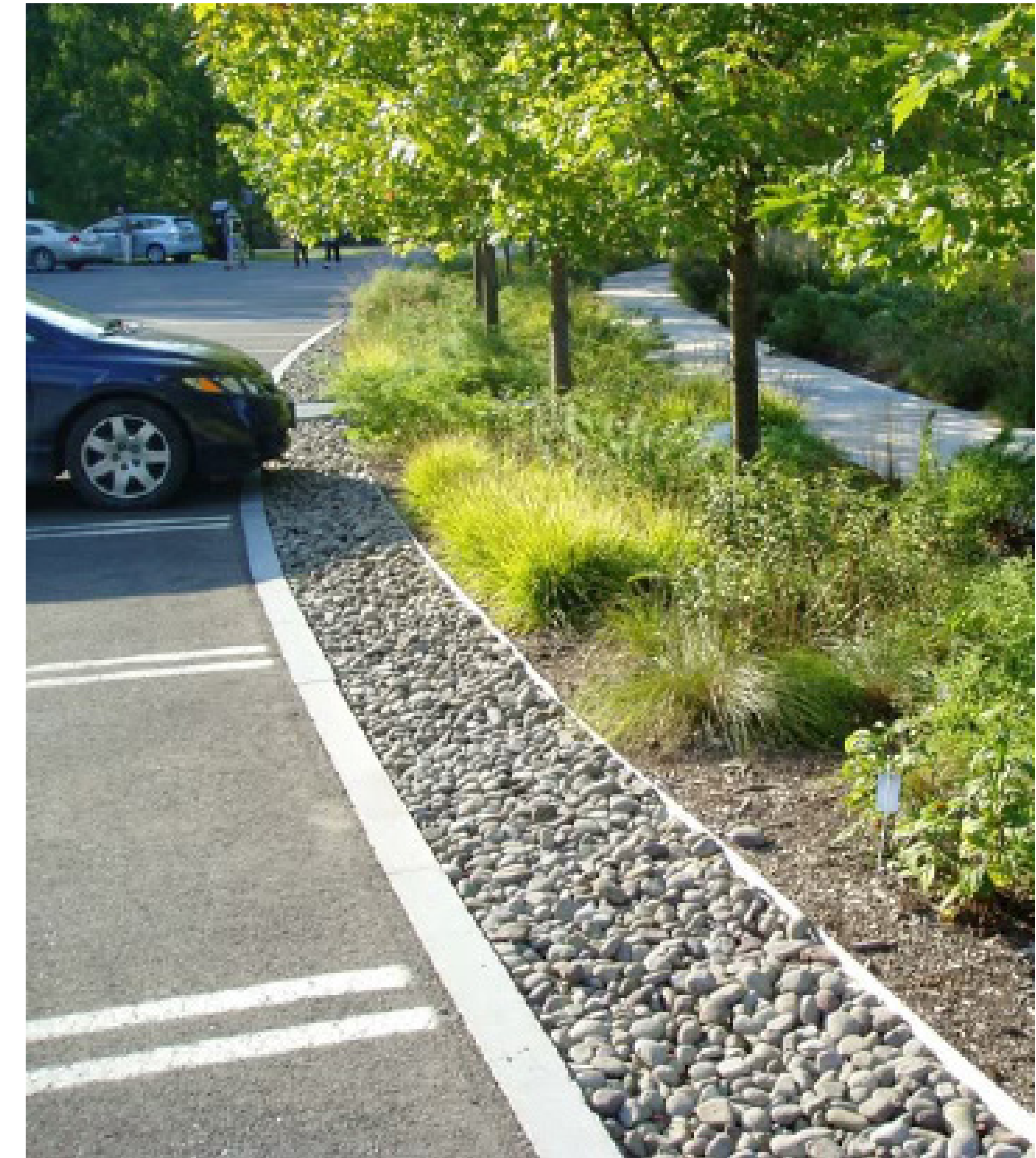
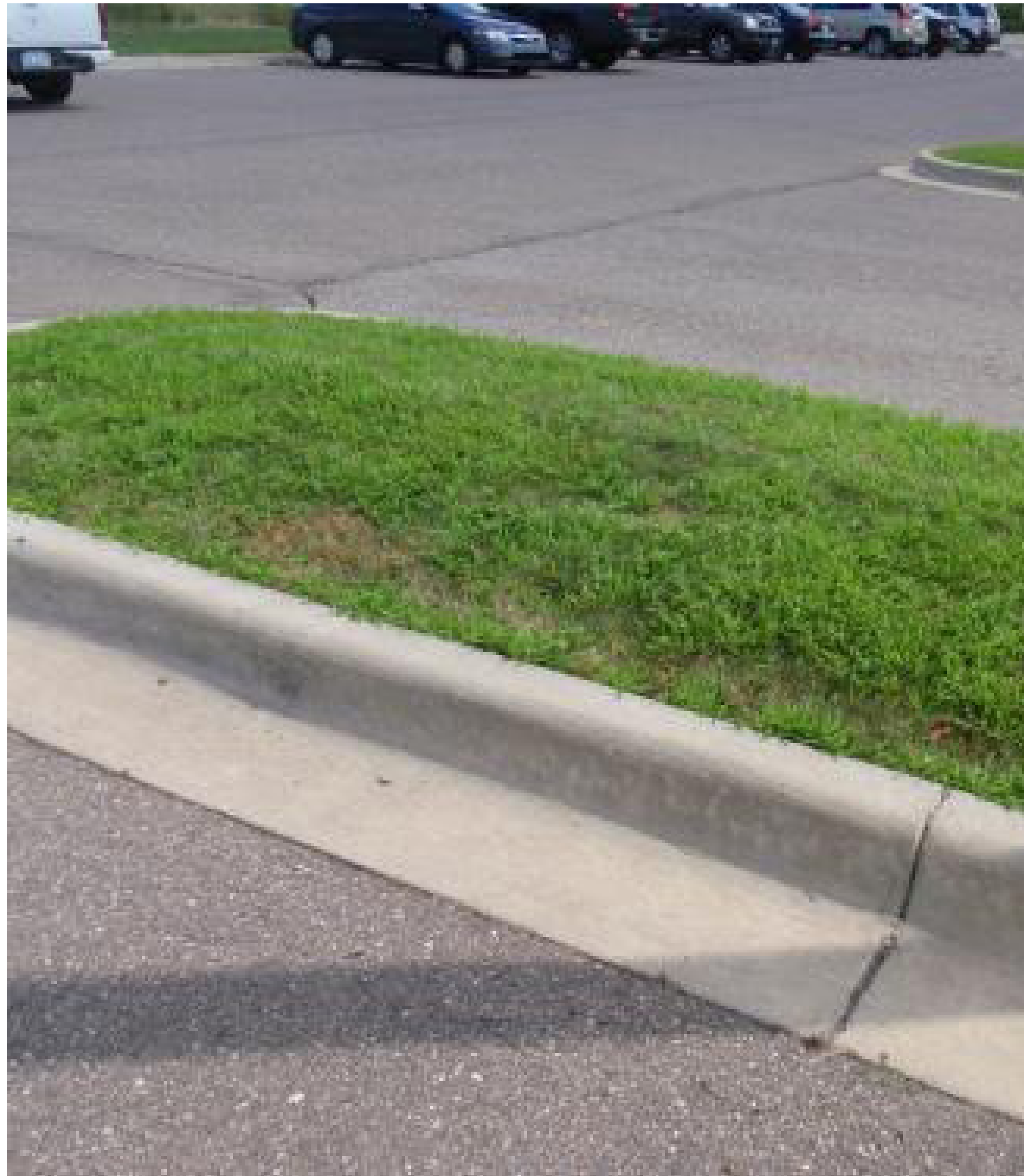
- LEGEND:**
- Enhancement Area
 - Enhancement Area Under Tracks

S MICHIGAN AVENUE ENHANCEMENT AREAS



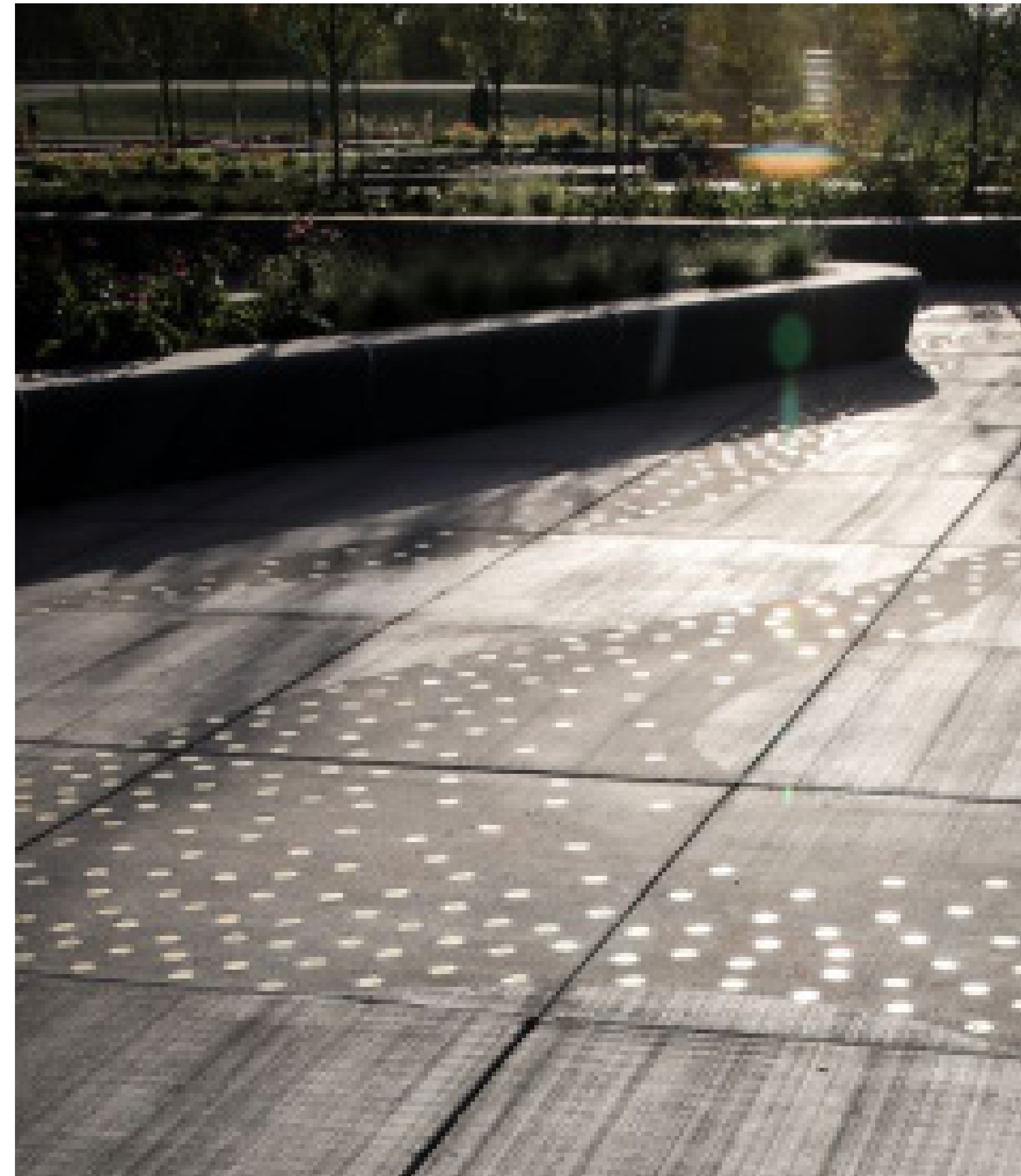
● Landscaping

Paisajismo



● Plaza pavers

Panel de adoquines de la plaza



● Station seating

Panel de asientos



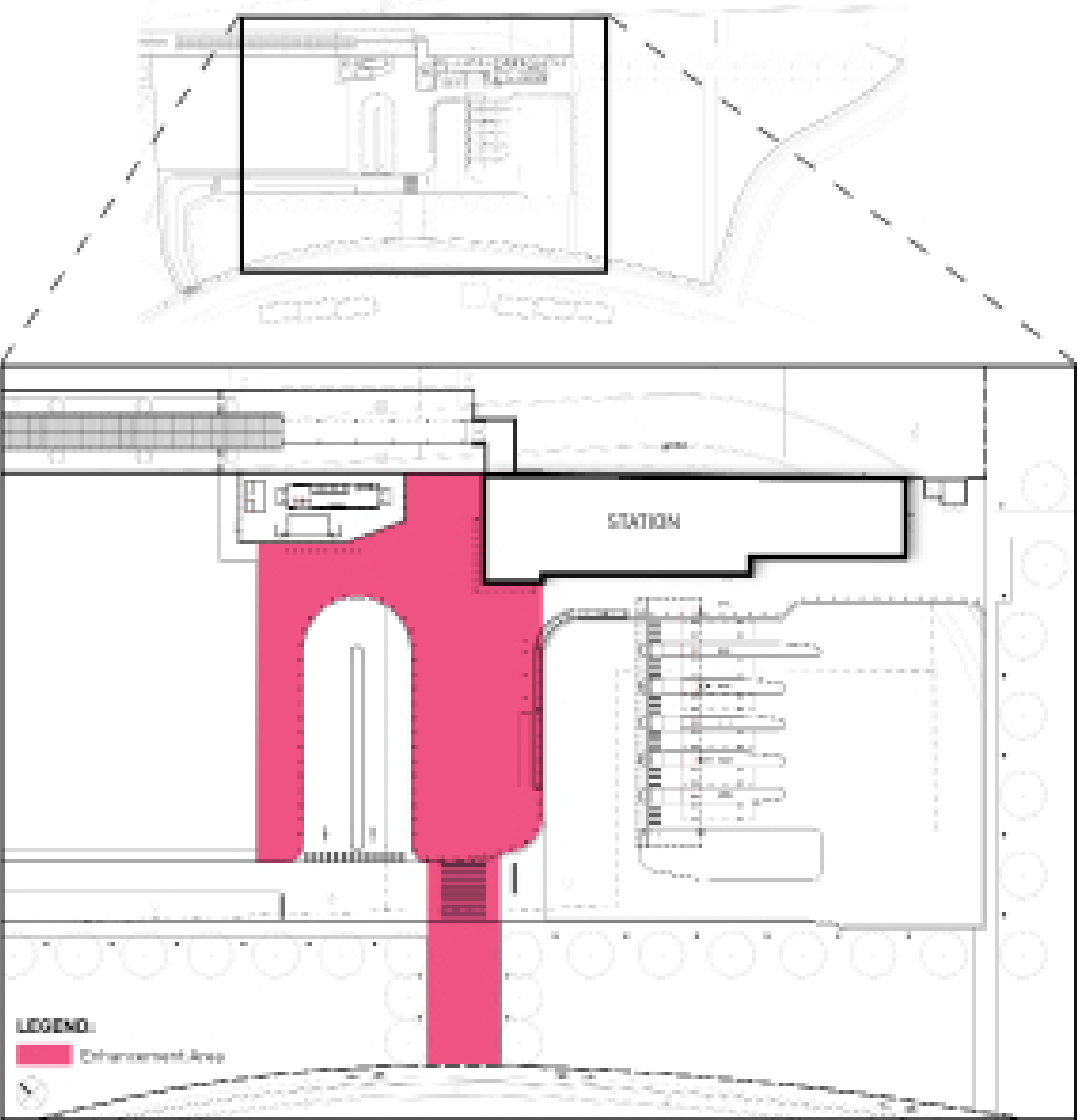
● 130th Street Station

Estación Calle 130

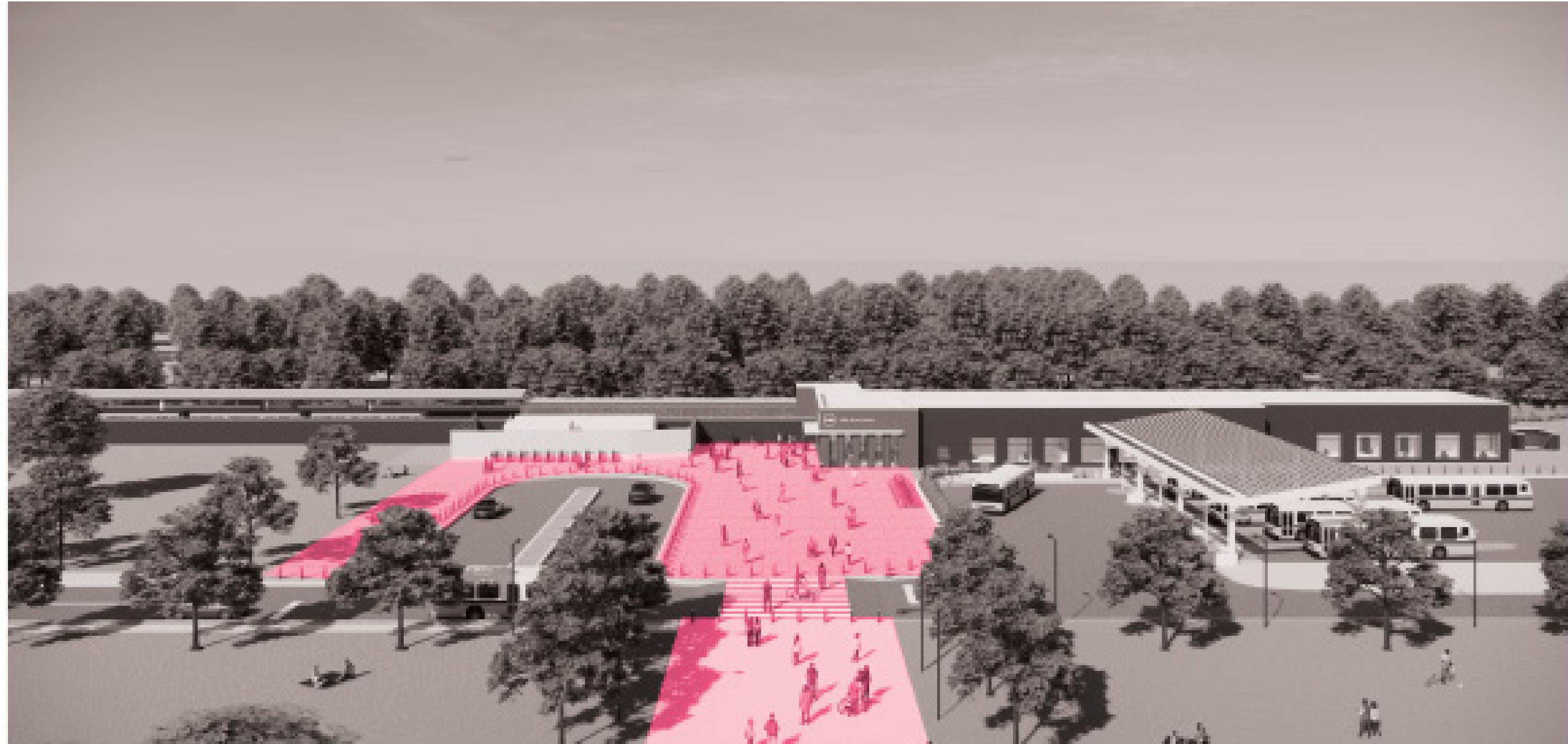


● 130th Street Station – Estación Calle 130

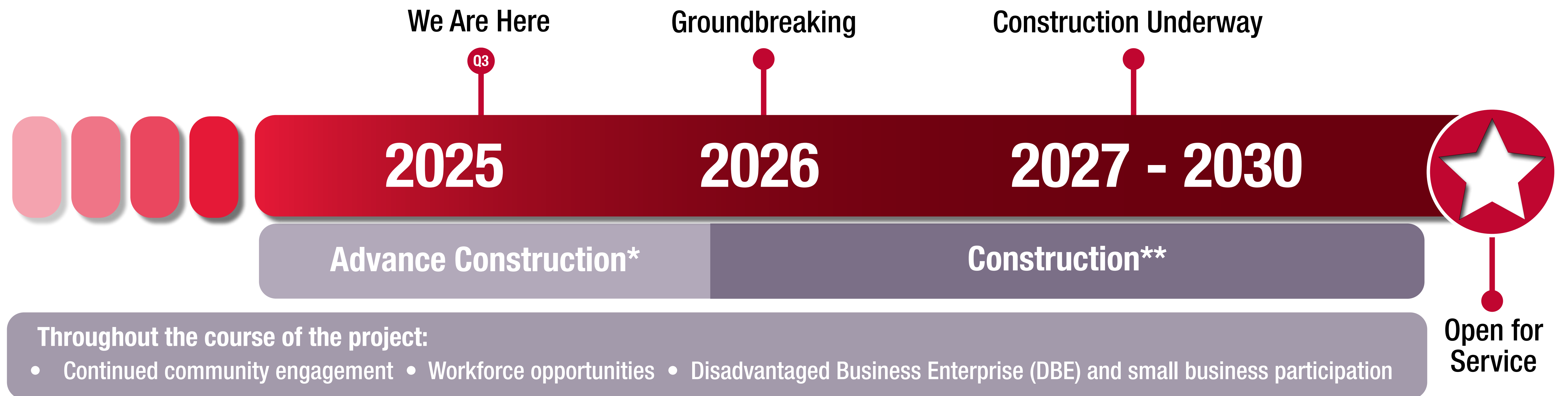
E 130TH STREET
ENHANCEMENT AREAS



E 130TH STREET
ENHANCEMENT AREAS



Project Schedule



Accomplishments to date:

- Federal, state and local Transit Tax Increment Financing (TIF) funding secured
- Transit-Supportive Development (TSD) Plan adopted
- Contract to design and build RLE Project awarded to Walsh VINCI Transit Community Partners
- Contracts with workforce agencies for RLE training and jobs awarded

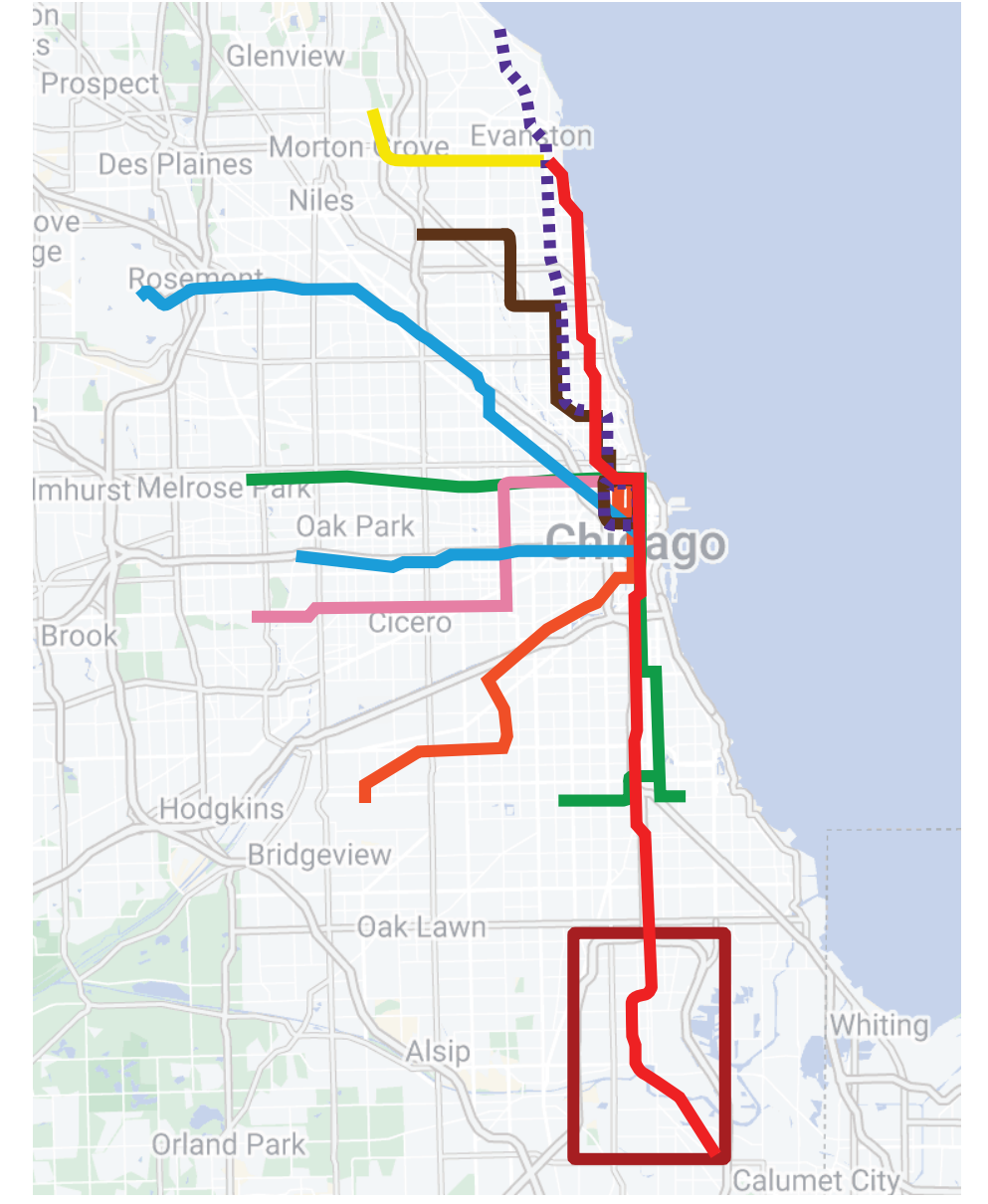
**Advance construction includes property demolition and utility equipment relocation.*

***Preparatory construction work including surveying and soil boring is now under way by Walsh VINCI.*








Exact dates are subject to change as the project advances.



Inset:



Legend:

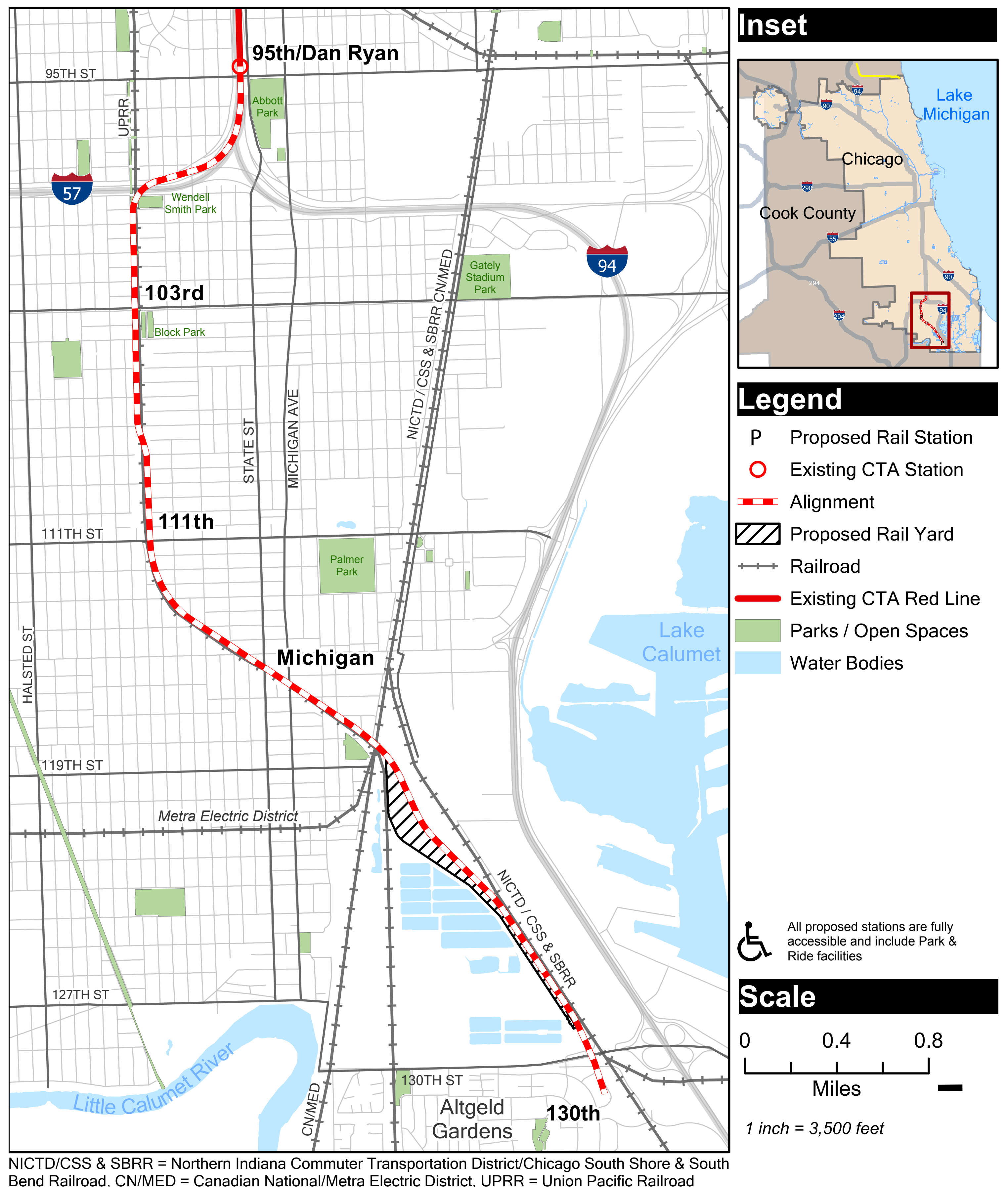
- - - Alignment
- Existing CTA Red Line
- Major Streets
-  Off Street Trail
- Bike Path
- Bike Path on Major Street
-  Railroad
- Bodies of Water
- Open Spaces
-  Proposed Rail Yard & Shop
-  Existing CTA Station
-  Proposed Rail Station
-  Landmark
-  Parks

RLE Project Background

The RLE Project would extend the Red Line from the existing 95th/Dan Ryan terminal to 130th Street.

- 5.5-mile extension
- Four new stations:
 - 103rd Street (near Eggleston Avenue)
 - 111th Street (near Eggleston Avenue)
 - Michigan Avenue (near 116th Street)
 - 130th Street (near Altgeld Gardens)
- Elevated tracks from 95th Street to 119th Street, then tracks will be at grade OR ground level from 119th Street to 130th Street
- Connections at each station would include bus, bike, pedestrian, and park & ride facilities
- New train storage yard & shop facility at 120th Street

Red Line Extension Alignment



Stay Informed!

Sign up for project alerts at transitchicago.com/rle.

Contact us at RedExtension@transitchicago.com or leave a message for callback at (312) 772-2272. To visit us at the RLE Community Office at 401 W. 111th, make an appointment by emailing or calling us at the email and number above.



transitchicago.com/rle



Facebook.com/CTARedExt



[@CTARedExt](https://www.instagram.com/CTARedExt)



redextension@transitchicago.com

